

# PSREF

## **Product Specifications Reference** **for ThinkStation and ThinkPad P Series**

Version 569

Last updated: December 2020

Yufeng Hou  
houyf@lenovo.com

Visit <https://psref.lenovo.com> for the latest version

## Summary of Changes

November 11, 2020 - Version 569

- Add Core i7-10710U and i7-10810U on ThinkPad P14s Gen 1 and ThinkPad P15s Gen 1

November 11, 2020 - Version 568

- Add new product ThinkPad P14s Gen 1 AMD
- Update weight on ThinkStation P330 Tower Gen 2 / P330 SFF Gen 2 / P340 Tower Gen 2 / P340 SFF Gen 2 / P720 / P920 Platform specifications
- Add missing information on ThinkStation P520c / P520 (300GB / 600GB SAS HDD) and ThinkStation P720 (DDR4-2933 RIMM) Platform specifications
- Add 8GB DDR4-3200 RDIMM on ThinkStation P620 Platform specifications
- Add Ubuntu Linux LTS and Fedora Linux support on ThinkPad P1 Gen 3 Platform specifications
- Add “Optional” to Lenovo USB-C to Ethernet Adapter on ThinkPad P1 Gen 3 Platform specifications

October 21, 2020 - Version 567

- Remove pad lock support from ThinkStation P520c / P520 / P620 / P720 / P920 Platform specifications
- Update Energy Star 8.0 on ThinkStation P330 Tower Gen 2 / P330 SFF Gen 2 / P330 Tiny / P520c / P520 / P620 / P720 / P920 Platform specifications
- Update Energy Star 8.0 on ThinkPad P73 / P53 / P53s / P43s Platform specifications
- Update NVIDIA GeForce RTX 2070 SUPER / RTX 2080 SUPER on ThinkPad T15g Gen 1 model configurations
- Correct ECC memory speed to DDR4-2933 on ThinkPad P17 Gen 1 model configurations

September 30, 2020 - Version 566

- Add 16GB Optane Memory on ThinkStation P340 Tower / P340 SFF Platform specifications
- Add WWAN ready on ThinkPad P15v Platform specifications
- Update Graphics description on ThinkPad P1 Gen 3 Platform specifications
- Add footnote for PCIe 4.0 SSD on both ThinkStation P620 Platform specifications and MTM configuration
- Remove ThinkPad P1, ThinkPad P51, ThinkPad P52, ThinkPad P52, ThinkPad P72 from PSREF alive product list and move to withdrawn products list

September 9, 2020 - Version 565

- Add new product ThinkStation P620
- Update EPEAT Silver on following products' platform specifications:

ThinkStation P330 Tower Gen 2 / P330 SFF Gen 2 / P340 Tower / P340 SFF / P340 Tiny

- Add 2x USB-A 3.2 Gen 1 optional ports on to ThinkStation P340 Tiny platform specifications
- Update power adapter value on some ThinkStation P340 Tiny models
- Add new product ThinkPad T15g
- Update ThinkPad P15v Battery life data (MobileMark 2018)
- Update EPEAT Gold on following products' platform specifications:

ThinkPad P1 Gen 2 / ThinkPad P1 Gen 3 / ThinkPad P14s Gen 1 / ThinkPad P15 Gen 1  
/

ThinkPad P15s Gen 1 / ThinkPad P15v Gen 1 / ThinkPad P17 Gen 1 / ThinkPad P43s /

ThinkPad P53 / ThinkPad P73

August 19, 2020 - Version 564

- Add new product: ThinkPad P1 Gen 3, ThinkPad P15v Gen 1
- Update EPEAT Gold on ThinkStation P340 Tiny Platform Specifications
- Add UHD panel on ThinkPad P15s Gen 1 Platform specifications
- Combine ThinkPad P series and ThinkStation PSREF

July 29, 2020 - Version 563

- Add new processors for ThinkStation P340 Tower / SFF

June 17, 2020 - Version 561

- New ThinkStation P340 Tower / SFF announced on June 9, 2020
- Add 625W / 1000W PSU, RTX 2070 Super, RTX 2080 Super, NVlink support

May 27, 2020 - Version 560

- New ThinkStation P340 Tiny announced on May 21, 2020

May 6, 2020 - Version 559

- Update vPro information on ThinkStation P330 Tower Gen 2 / SFF Gen 2

April 15, 2020 - Version 558

- Update weight data on ThinkStation P330 Tower Gen 2
- Add new product ThinkStation P920 Rack

March 25, 2020 - Version 557

- Add Core i5-8700K, Geforce GTX 1660 Ti, RTX 2070, RTX 2080 on ThinkStation P330 Tower Gen 2

March 4, 2020 - Version 556

- Add Core i5-9400F on ThinkStation P330 Tower Gen 2 and ThinkStation P330 SFF Gen 2

December 31, 2019 - Version 553

- Add Xeon W-2200 series Processor and DDR4-2933 memory on ThinkStation P520c and P520

December 11, 2019 - Version 552

- Add Xeon Gold 6226 and 6244 on ThinkStation P920 and P720

August 7, 2019 - Version 546

- Update processor information on ThinkStation P330 Tiny

July 17, 2019 - Version 545

- Update EPEAT rating to Silver on most ThinkStation

June 26, 2019 - Version 544

- Add ThinkStation P330 Tower Gen 2/P330 SFF Gen 2 CPU Async update

May 15, 2019 - Version 542

- New ThinkStation P330 Tower Gen 2/P330 SFF Gen 2 announced on April 2019
- Update ThinkStation P920/P720/P520 specifications, add Quadro RTX 8000, DDR4-2933, Xeon Scalable Gen 2

March 13, 2019 - Version 539

- Add Intel vPro information on ThinkStation P330 Tower/P330 SFF/P520c/P520/P720/P920

February 20, 2019 - Version 538

- New ThinkStation P330 Tower models announced on February 2019
- Update ThinkStation P920/P720/P520/P520c specifications, add Quadro RTX4000/5000/6000

August 22, 2018 - Version 529

- New ThinkStation P330 Tower/SFF/Tiny models announced on August 2018
- Update ThinkStation P920/P720 specifications, update flex bay and graphics adapter section

August 1, 2018 - Version 528

- New product ThinkStation P330 Tower/SFF/Tiny announced on July 2018
- Update ThinkStation P920/P720/P520/P520c, add Refresh 2.0 information
- Remove all MTM PNs from PDF version

June 20, 2018 - Version 526

- New ThinkStation P320 Tower models announced on June 2018
- Update ThinkStation P720 and P920 models, remove EOL models for US
- Update Windows 10 Pro 64 for Workstations for some ThinkStation P720/P920 models

May 30, 2018 - Version 525

- Added ThinkStation P720/P920 EMEA May 2018 models

April 18, 2018 - Version 523

- New ThinkStation P320 Tower/ P320 SFF/P520c/P520/P720/P920 models announced on April 2018

March 28, 2018 - Version 522

- New ThinkStation P320 Tower/ P320 SFF/P520c/P520/P920 announced on March 2018

March 7, 2018 - Version 521

- New ThinkStation P320 Tower/ P320 SFF/P720/P920 announced on February 2018

January 30, 2018 - Version 519

- New ThinkStation P520c and P520 announced on January 2018
- New ThinkStation P320 Tower/P320 SFF announced on January 2018

December 20, 2017 - Version 517

- New ThinkStation P920 models announced on December 2017
- Add Optional Ports on ThinkStation P320 Tiny

September 29, 2017 - Version 513

- New ThinkStation P920 and P720 announced on September 2017
- New ThinkStation P320 Tower/P320 SFF/P410/P510/P710/P910 announced on September 2017

September 12, 2017 - Version 512

- New ThinkStation P320 Tower and P320 SFF models announced on August 2017

August 23, 2017 - Version 511

- New ThinkStation P320 Tiny models announced on August 2017

August 2, 2017 - Version 510

- New ThinkStation P320 Tiny/P320 Tower/ P320 SFF/P410/P510 models announced on July 2017

June 21, 2017 - Version 508

- New ThinkStation P320 Tiny announced on June 2017

May 26, 2017 - Version 507

- Add ThinkStation P410/P510/P710/P910 Refresh 3.0 Wave 1 models and update platform specifications

April 19, 2017 - Version 505

- New ThinkStation P320 Tower announced on April 2017
- New ThinkStation P320 SFF announced on April 2017

March 29, 2017 - Version 504

- Added ThinkStation P310 Tower and SFF models announced on March 2017
- Added ThinkStation P410 models announced on March 2017

January 25, 2017 - Version 501

- Update quantity of PCIe SSD adapter in ThinkStation P510/P910

January 4, 2017 - Version 500

- Added ThinkStation P310 models announced on December 2016

December 14, 2016 - Version 499

- Added ThinkStation P410/P510/P710/P910 EMEA models
- Added 1TB M.2 PCIe SSD, Quadro P5000, Quadro P6000 support on ThinkStation P510/P710/P910
- Added Quadro P5000 support on ThinkStation P410
- Added 6TB 7.2K SATA6Gbs HDD support on ThinkStation P410/P510/P710/P910
- Added ThinkStation P410/P510/P710/P910 models announced on December 2016

November 23, 2016 - Version 498

- Removed ThinkStation P500/P900 due to EOL
- Added ThinkStation P310 Tower and SFF models announced on November 2016

October 12, 2016 - Version 496

- Removed flash option on ThinkStation P510/P710/P910
- Added ThinkStation P310/P410/P510/P710/P910 models announced on September 2016

August 3, 2016 - Version 493

- Removed ThinkStation P500/P700/P900 Windows 7 DG from Win8.1 U.S. models
- Added keyboard and mouse features on all ThinkStation

July 13, 2016 - Version 492

- Added ThinkStation P500, P700, and P900 Windows 10 downgrade to Windows 7 models
- Updated Maximum configuration weight of ThinkStation P410
- Added ThinkStation P710 and P910 models announced on on July 2016

- Added "Maximum drives in 3.5" bay" feature on ThinkStation P500/P510/P700/P710/P900/P910

June 22, 2016 - Version 491

- Added new product ThinkStation P410/P510
- Added NVIDIA Quadro M2000 on ThinkStation P310 Tower
- Added keyboard and mouse information on ThinkStation P710/P910
- Added internal USB information on ThinkStation P710/P910

June 2, 2016 - Version 490

- Added ThinkStation P710/P910 US models
- Updated ThinkStation P710/P910 processor information

May 19, 2016 - Version 489

- Added NVIDIA Quadro M2000 on compatible product
- Updated maximum weight on ThinkStation P710
- Removed 30AT000BUS

April 27, 2016 - Version 488

- Added ThinkStation P710 and P910 models for EMEA, announced on April 2016
- Updated Energy star information on ThinkStation P500/P700/P710/P900/P910

April 6, 2016 - Version 487

- New ThinkStation P710 and P910, announced April 5, 2016 (specification only)

March 23, 2016 - Version 486

- Added processors specifications for P310/P500/P700/P900

February 24, 2016 - Version 485

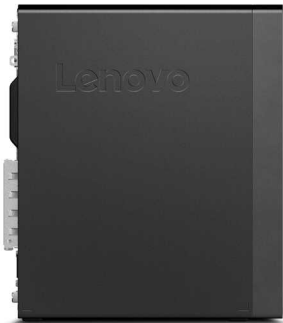
- Added ThinkStation P310 and P700 models for US, announced on February 2016
- Added ThinkStation P700 and P900 models for EMEA, announced on February 2016

December 9, 2015 - Version 482

- New ThinkStation P310 Tower and SFF, announced November 24, 2015

November 18, 2015 - Version 481

- Combines ThinkStation PSREF United States version and Western Europe version.
- Extends the supported GEO into Europe, Middle East and Africa.
- Covers all TopSeller and Relationship models for US and all focus models for EMEA





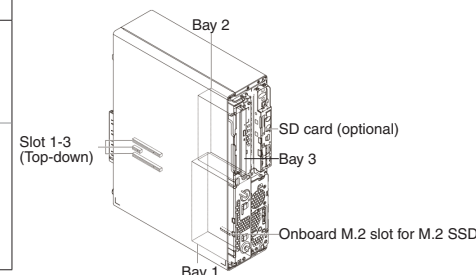
# ThinkStation P330 SFF Gen 2 (30D1 and 30D2) Platform Specifications

Product Specifications Reference (PSREF)

Components	Specification					
Form factor	8.4L mini-tower					
Dimensions	Height: 343.5 mm (13.5 in). Width: 92.5 mm (3.6 in). Depth: 305.6 mm (12 in)					
Weight	Maximum configuration: 16.76 lb (7.6kg)					
Processor	Supports one of the following processor:					
	Xeon E-2278G	8C/16T/3.4GHz/16MB/80W/DDR4-2666	(260W PSU needed)			
	Xeon E-2276G	6C/12T/3.8GHz/12MB/80W/DDR4-2666				
	Xeon E-2274G	4C/8T/4.0GHz/8MB/83W/DDR4-2666				
	Xeon E-2246G	6C/12T/3.6GHz/12MB/80W/DDR4-2666				
	Xeon E-2244G	4C/8T/3.8GHz/8MB/71W/DDR4-2666				
	Xeon E-2236	6C/12T/3.4GHz/12MB/80W/DDR4-2666				
	Xeon E-2234	4C/8T/3.6GHz/8MB/71W/DDR4-2666				
	Xeon E-2226G	6C/6T/3.4GHz/12MB/80W/DDR4-2666				
	Xeon E-2224G	4C/4T/3.5GHz/8MB/71W/DDR4-2666				
	Xeon E-2224	4C/4T/3.4GHz/8MB/71W/DDR4-2666				
	Xeon E-2174G	4C/8T/3.8GHz/8MB/71W/DDR4-2666				
	Core i9-9900	8C/16T/3.1GHz/16MB/65W/DDR4-2666				
	Core i7-9700	8C/8T/3.0GHz/12MB/65W/DDR4-2666				
	Core i7-8700	6C/12T/3.2GHz/12MB/65W/DDR4-2666				
	Core i5-9600	6C/6T/3.1GHz/9MB/65W/DDR4-2666				
	Core i5-9500	6C/6T/3.0GHz/9MB/65W/DDR4-2666				
	Core i5-9400F	6C/6T/2.9GHz/9MB/65W/DDR4-2666				
	Core i5-9400	6C/6T/2.9GHz/9MB/65W/DDR4-2666				
	Core i5-8500	6C/6T/3.0GHz/9MB/65W/DDR4-2666				
	Core i3-9300	4C/4T/3.7GHz/8MB/62W/DDR4-2400				
	Core i3-9100	4C/4T/3.6GHz/6MB/65W/DDR4-2400				
	Core i3-8300	4C/4T/3.7GHz/8MB/62W/DDR4-2400				
	Core i3-8100	4C/4T/3.6GHz/6MB/65W/DDR4-2400				
Pentium Gold G5620	2C/4T/4.0GHz/4MB/54W/DDR4-2400					
Chipset	Intel C246 Chipset					
Memory Sockets	4 DIMM sockets with 2 channels					
Memory Types	8GB/16GB DDR4-2666 UDIMM ECC or 4GB/8GB/16GB/32GB DDR4-2666 UDIMM non-ECC					
Memory Capacity	64GB with 4 x 16GB for UDIMM ECC or 128GB with 4 x 32GB UDIMM non-ECC					
Memory Protection	ECC on models with UDIMM ECC meemory					
Expansion slots	Three PCIe 3.0 slots as following:					
	Slot 1	PCIe 3.0 x16, low profile, links to CPU				
	Slot 2	PCIe 3.0 x1, low profile, links to PCH				
	Slot 3	PCIe 3.0 x16 (negotiable link width x4), low profile, links to PCH				
Processor graphics	Integrated Intel UHD Graphics P630 in -G suffix Xeon processors, or Intel UHD Graphics 630 in Core i5 or i3 processors. Works along with discrete graphics to support multi-display, enables three rear display connectors (2 DP standard, 1 DP or HDMI optional)					
Discrete graphics card	Up to two PCIe 3.0 x16 slots for discrete graphics adapter (Slot 1 and 3). Supports the following graphics adapters:					
	Adapter	Cores	Memory	Power	Connectors	Max qty
	Quadro P400	256	2GB GDDR5	30W	3x miniDP	2
	Quadro P620	512	2GB GDDR5	40W	4x miniDP	2
	Quadro P1000	640	4GB GDDR5	47W	4x miniDP	2
Storage Controller	Storage Controller	Type	Interface	Disk Type	RAID	
	Onboard Intel RST SATA RAID	Std	SATA 6Gb/s	HDD or SSD	0/1	
	Onboard Intel RST PCIe RAID	Std	PCIe NVMe	M.2 PCIe SSD	0/1	
Notes: M.2 SSD support is limited, please see Storage bay section for more information						
Storage Support	Disk Type	Interface	RPM	Offering		Max Qty
	3.5" SATA HDD	SATA 6Gb/s	7.2K	1TB/2TB/4TB		1
	2.5" SATA HDD	SATA 6Gb/s	7.2K	500GB FIPS		2
	2.5" SATA SSD	SATA 6Gb/s		256GB/512GB/1TB		2
	Optane Memory	PCIe NVMe		32GB		1, used with HDD/SSD
	M.2 PCIe SSD	PCIe NVMe		256GB/512GB/1TB		3

Components	Specification
Storage bay	Up to 3 bays with two disk bays and one slim optical bay:
	Bay 1 Primary 3.5" SATA bay
	Bay 2 2.5" SATA bay (Optional)
	Bay 3 9mm Slim ODD bay
	M.2 3x M.2 SSD (1 onboard, 2 via PCIe to M.2 adapter) Notes: Support 1x M.2 SSD at present, 3x M.2 SSD support is pending availability
M.2 slot for Wi-Fi and Bluetooth	One dedicated onboard M.2 slot for optional Intel Wireless-AC 9560, 2x2, 2.4GHz/5GHz (160MHz channels), 802.11ac, Bluetooth 5, up to 1.73Gbps
Media reader	Optional 7-in-1 card reader on most models
Network interfaces	One onboard GbE port via integrated gigabit ethernet Intel i219LM, supports Wake-on-LAN. Optional PCIe ethernet adapters are available
Security features	Power-on and admin password. Trusted Platform Module, TCG 2.0 compliant. Optional chassis intrusion switch, E-lock, cable lock, Kensington lock, and pad lock
Intel vPro	Supports Intel vPro on Xeon and selected Core i7 or i5 models. vPro also requires Wireless-AC 9560 if Wi-Fi is needed
Intel AMT	Intel Active Management Technology 12 on Xeon and selected Core i7 or i5 models. Intel Standard Manageability on other models
Base warranty	US models comes with 3-year limited onsite service with 9x5/NBD. 1 or 3-year limited onsite service with 9x5/NBD in EMEA or other GEOs
HD Audio	Intel HD Audio interface with Realtek ALC233 Codec
Front ports	2x USB 3.1 Gen 1 Type A. 2x USB 3.1 Gen 2 Type A. 1x USB 3.1 Gen 1 Type-C. 1x Mic-in. 1x Combo jack
Rear ports	2x USB 3.1 Gen 1 Type A. 2x USB 2.0 Type-A. 1x RJ-45. 1x COM. 2x DP. 1x Audio line-out Notes: DP needs Core, Pentium, or -G suffix Xeon processor
Optional rear ports	Supports the following via cable: 1x COM. 1x Parallel. 2x PS/2. 1x DP or 1x HDMI. 2x USB 2.0
	Supports the following via PCIe adapter: 4x COM. 2x USB 3.1 Type-C. 2x USB 3.1 Gen 1. 1x Thunderbolt. Notes: DP or HDMI needs Core, Pentium, or -G suffix Xeon processor
Temperature	Operating: 50 °F to 95 °F (10 °C to 35 °C) Non operating (no package): 14 °F to 140 °F (-10 °C to 60 °C) Non operating (with package): -40 °F to 140 °F (-40 °C to 60 °C)
Altitude	Operating: -15.2 m (-50 ft) to 3048 m (10 000 ft). Storage: -15.2 m (-50 ft) to 10, 668 m (35 000 ft)
Humidity	Operating: 30%-90%, non-condensing Storage (with package): 20%-90%, non-condensing
Environmental certification	RoHS-compliant. GREENGUARD. EPEAT Silver rating and ENERGY STAR 8 qualified
Power supply	Supports one 210W or 260W power supply. 210W is 100V - 240V, 85% PSU, Climate Savers Computing Bronze and 80 PLUS Bronze qualified. 260W is 100V - 240V, 92% PSU, Climate Savers Computing Platinum and 80 PLUS Platinum qualified
ISV certifications	Please visit <a href="http://www.thinkworkstations.com/isv-certifications/">www.thinkworkstations.com/isv-certifications/</a>

Note:  
1. Depending on many factors, actual data transfer speed mentioned on this page may be lower than theoretical speed.  
2. Any questions or advice on ThinkStation PSREF, please contact [ThinkStation PSREF developer](#)





# ThinkStation P330 Tiny Platform Specifications - I of II

Product Specifications Reference (PSREF)

Components	Specification									Components	Specification				
Form factor	1L. Optional VESA mount bracket kit, supports VESA 75mm and 100mm. Optional floor stand for vertical orientation. Optional tool-less chassis open. Optional dust filter									Expansion slots	One PCIe slot via specific riser card: PCIe 3.0 x16 (negotiable link width x8) and low profile for discrete graphics card; PCIe 3.0 x4 and low profile for i350-T4 adapter and quad COM ports adapter				
Dimensions	Height: 179 mm (7.0 in). Width: 37 mm (1.5 in). Depth: 183 mm (7.2 in)									Graphics	65W or 62W processor models supports processor graphics only. 35W processor models come with processor graphics plus a discrete graphics adapter				
Weight	Maximum configuration: 2.9 lb (1.3kg)									Graphics - Processor graphics	Integrated Intel UHD Graphics 630. Works along with discrete graphics to support multi-display				
Recommended monitors	Lenovo recommends ThinkVision P series monitors for best display performance and productivity									Graphics - Discrete graphics card	One of the following discrete graphics cards on 35W processor models:				
Processor	Supports one of the following:									Adapter	Cores	Memory	Pow-er	Connectors	
	Processor Number	Cores	Threads	Base Frequency	Cache	TDP	Memory Types	Processor Graphics	Quadro P620	512	2GB GDDR5	40W	4x miniDP		
	Core i9-9900T	8	16	2.1GHz	16MB	35W	DDR4-2666	Intel UHD Graphics 630	Quadro P1000	640	4GB GDDR5	47W	4x miniDP		
	Core i7-9700T	8	8	2.0GHz	12MB	35W	DDR4-2666	Intel UHD Graphics 630							
	Core i7-9700	8	8	3.0GHz	12MB	65W	DDR4-2666	Intel UHD Graphics 630							
	Core i5-9600T	6	6	2.3GHz	9MB	35W	DDR4-2666	Intel UHD Graphics 630							
	Core i5-9600	6	6	3.1GHz	9MB	65W	DDR4-2666	Intel UHD Graphics 630							
	Core i5-9500T	6	6	2.2GHz	9MB	35W	DDR4-2666	Intel UHD Graphics 630							
	Core i5-9500	6	6	3.0GHz	9MB	65W	DDR4-2666	Intel UHD Graphics 630							
	Core i5-9400T	6	6	1.8GHz	9MB	35W	DDR4-2666	Intel UHD Graphics 630							
	Core i5-9400	6	6	2.9GHz	9MB	65W	DDR4-2666	Intel UHD Graphics 630							
	Core i3-9320	4	4	3.7GHz	8MB	62W	DDR4-2400	Intel UHD Graphics 630							
	Core i3-9300T	4	4	3.2GHz	8MB	35W	DDR4-2400	Intel UHD Graphics 630							
	Core i3-9300	4	4	3.7GHz	8MB	62W	DDR4-2400	Intel UHD Graphics 630							
	Core i3-9100T	4	4	3.1GHz	6MB	35W	DDR4-2400	Intel UHD Graphics 630							
	Core i3-9100	4	4	3.6GHz	6MB	65W	DDR4-2400	Intel UHD Graphics 630							
	Core i7-8700T	6	12	2.4GHz	12MB	35W	DDR4-2666	Intel UHD Graphics 630							
	Core i7-8700	6	12	3.2GHz	12MB	65W	DDR4-2666	Intel UHD Graphics 630							
	Core i5-8600T	6	6	2.3GHz	9MB	35W	DDR4-2666	Intel UHD Graphics 630							
	Core i5-8600	6	6	3.1GHz	9MB	65W	DDR4-2666	Intel UHD Graphics 630							
	Core i5-8500T	6	6	2.1GHz	9MB	35W	DDR4-2666	Intel UHD Graphics 630							
	Core i5-8500	6	6	3.0GHz	9MB	65W	DDR4-2666	Intel UHD Graphics 630							
	Core i5-8400T	6	6	1.7GHz	9MB	35W	DDR4-2666	Intel UHD Graphics 630							
	Core i5-8400	6	6	2.8GHz	9MB	65W	DDR4-2666	Intel UHD Graphics 630							
	Core i3-8300T	4	4	3.2GHz	8MB	35W	DDR4-2400	Intel UHD Graphics 630							
	Core i3-8300	4	4	3.7GHz	8MB	62W	DDR4-2400	Intel UHD Graphics 630							
	Core i3-8100T	4	4	3.1GHz	6MB	35W	DDR4-2400	Intel UHD Graphics 630							
	Core i3-8100	4	4	3.6GHz	6MB	65W	DDR4-2400	Intel UHD Graphics 630							
Chipset	Intel Q370 Chipset									Storage controllers	Integrated Intel SATA AHCI controller in chipset, 6Gbps SATA, one onboard SATA port for 2.5" HDD				
Memory	2 DIMM sockets. DDR4-2666. SoDIMM. Non-ECC									Internal storage bay	Up to one 2.5" HDD on models without discrete graphics card				
Memory Capacity	64GB (2x 32GB)									Disks	2.5" HDD supports up to 2TB, SATA 6Gbps, 5.4K; or 1TB SATA 6Gbps, 7.2K				
										M.2 slot for SSD	Two onboard M.2 slots for M.2 SSD				
										M.2 SSD	M.2 2280 SSD supports up to 1TB each, optional Opal. M.2 2242 SSD supports up to 512GB each				
										Optane memory	Up to one 16GB Optane memory per system. Optane memory must work with a 2.5" HDD				
										M.2 slot for Wi-Fi and Bluetooth	One dedicated M.2 2230 slot for optional Wi-Fi card, supports one of the following: Intel Wireless-AC 9560, 2x2, 2.4GHz/5GHz (160MHz channels), 802.11ac, Bluetooth 5, up to 1.73Gbps. Intel Wireless-AC 8265, 2x2, 2.4GHz/5GHz, 802.11ac, Bluetooth 4.2, up to 867Mbps. <i>Note: Wi-Fi card, or specific functions of Wi-Fi card may not be supported in some countries</i>				
										Wi-Fi antenna	Optional Tiny 2.4GHz/5GHz SMA antenna kit				
										Optical	Optional one 9.0mm optical drive via optical drive kit, DVD-ROM or DVD±RW. VESA mount is required				
										Media reader	None. Using USB adapter				
										Network interfaces	One onboard GbE port via integrated gigabit ethernet Intel i219LM, supports Wake-on-LAN. Optional Intel i350-T4 for 4x GbE ports, using PCIe slot				
										Security features	Power-on and admin password. Trusted Platform Module, TCG 2.0 compliant. Chassis intrusion switch. Optional Kensington lock				
										Intel vPro Technology	Supports vPro on models with the following processors: Core i7-8700T, Core i7-8700, Core i5-8600T, Core i5-8600, Core i5-8500T, Core i5-8500. vPro also requires Wireless-AC 9560 if Wi-Fi is needed				
										Systems management	Intel Active Management Technology 12 on vPro models, Intel Standard Manageability on other models				
										Base warranty	US models comes with 3-year limited onsite service with 9x5/NBD. 1 or 3-year limited onsite service with 9x5/NBD in EMEA or other GEOs				
										HD Audio	Intel HD Audio interface with Realtek ALC233 Codec				
										Front standard ports	1x USB 3.1 Gen 1 Type A (charging). 1x USB 3.1 Gen 1 Type-C. 1x Mic-in. 1x Combo jack				
										Rear standard ports	2x USB 3.1 Gen 2 Type A. 2x USB 3.1 Gen 1 Type-A. 1x RJ-45. 1x DP. 1x HDMI				
										Optional rear ports - via punch out cable	Up to two optional rear ports via punch out cable. Port 1 supports one of the following: 1x USB 3.1 Gen 1 Type-C, also supports DP function. 1x COM. 1x VGA. 1x DP. 1x HDMI. Port 2 supports one COM				

## ThinkStation P330 Tiny Platform Specifications - II of II

Product Specifications Reference (PSREF)

Components	Specification
Optional rear ports - via PCIe adapter	Supports one of the following: 4x miniDP with Quadro P620 or P1000, 35W processor models only 2x USB 3.1 Gen 1. 4x RJ-45 GbE with Intel I350-T4. 4x COM <i>Note: Punch out cable and PCIe adapter are mutually exclusive</i>
Temperature	Operating: 50 °F to 95 °F (10 °C to 35 °C) Non operating (with package): -40 °F to 140 °F (-40 °C to 60 °C)
Altitude	Operating: -15.2 m (-50 ft) to 3048 m (10 000 ft). Storage: -15.2 m (-50 ft) to 10, 668 m (35 000 ft)
Humidity	Operating: 20%~80%, non-condensing Storage (with package): 20%~90%, non-condensing
MIL-SPEC	Certified
Environmental certification	RoHS-compliant. GREENGUARD. EPEAT Silver rating and ENERGY STAR 8 qualified
Power supply	Supports one 135W power adapter, 100V - 240V, 88% PSU
ISV certifications	Please visit <a href="http://www.thinkworkstations.com/isv-certifications/">www.thinkworkstations.com/isv-certifications/</a>





# ThinkStation P330 Tower Gen 2 (30CY and 30D0) Platform Specifications - I of II

Product Specifications Reference (PSREF)

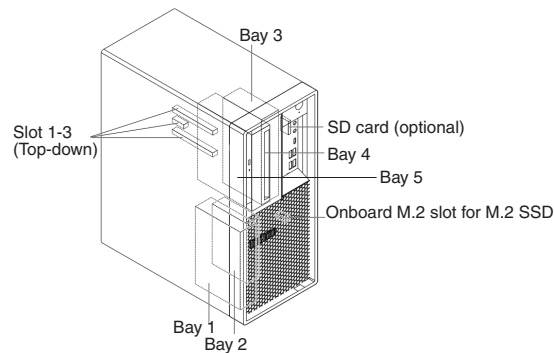
Components	Specification	
Form factor	18L Tower	
Dimensions	Height: 376 mm (14.8 in). Width: 165 mm (6.5 in). Depth: 328 mm (12.9 in)	
Weight	Maximum configuration: 21.61 lb (9.8kg)	
Processor	Supports one of the following processors:	
	Xeon E-2286G6C/12T/4.0GHz/12MB/95W/DDR4-2666400W PSU needed	
	Xeon E-2278G8C/16T/3.4GHz/16MB/80W/DDR4-2666400W PSU needed	
	Xeon E-2276G6C/12T/3.8GHz/12MB/80W/DDR4-2666	
	Xeon E-2274G4C/8T/4.0GHz/8MB/83W/DDR4-2666	
	Xeon E-2246G6C/12T/3.6GHz/12MB/80W/DDR4-2666	
	Xeon E-2244G4C/8T/3.8GHz/8MB/71W/DDR4-2666	
	Xeon E-22366C/12T/3.4GHz/12MB/80W/DDR4-2666	
	Xeon E-22344C/8T/3.6GHz/8MB/71W/DDR4-2666	
	Xeon E-2226G6C/6T/3.4GHz/12MB/80W/DDR4-2666	
	Xeon E-2224G4C/4T/3.5GHz/8MB/71W/DDR4-2666	
	Xeon E-22244C/4T/3.4GHz/8MB/71W/DDR4-2666	
	Xeon E-2186G6C/12T/3.8GHz/12MB/95W/DDR4-2666400W PSU needed	
	Xeon E-2174G4C/8T/3.8GHz/8MB/71W/DDR4-2666	
	Core i9-9900K8C/16T/3.6GHz/16MB/95W/DDR4-2666400W PSU needed	
	Core i9-99008C/16T/3.1GHz/16MB/65W/DDR4-2666	
	Core i7-9700K8C/8T/3.6GHz/12MB/95W/DDR4-2666400W PSU needed	
	Core i7-97008C/8T/3.0GHz/12MB/65W/DDR4-2666	
	Core i7-8700K6C/12T/3.7GHz/12MB/95W/DDR4-2666	
	Core i7-87006C/12T/3.2GHz/12MB/65W/DDR4-2666	
	Core i5-9600K6C/6T/3.7GHz/9MB/95W/DDR4-2666400W PSU needed	
	Core i5-96006C/6T/3.1GHz/9MB/65W/DDR4-2666	
	Core i5-95006C/6T/3.0GHz/9MB/65W/DDR4-2666	
	Core i5-9400F6C/6T/2.9GHz/9MB/65W/DDR4-2666	
	Core i5-94006C/6T/2.9GHz/9MB/65W/DDR4-2666	
	Core i5-85006C/6T/3.0GHz/9MB/65W/DDR4-2666	
	Core i3-93004C/4T/3.7GHz/8MB/62W/DDR4-2400	
	Core i3-91004C/4T/3.6GHz/6MB/65W/DDR4-2400	
	Core i3-83004C/4T/3.7GHz/8MB/62W/DDR4-2400	
	Core i3-81004C/4T/3.6GHz/6MB/65W/DDR4-2400	
	Chipset	Intel C246 Chipset
	Memory Sockets	4 DIMM sockets with 2 channels
Memory Types	8GB/16GB DDR4-2666 UDIMM ECC or 4GB/8GB/16GB/32GB DDR4-2666 UDIMM non-ECC	
Memory Capacity	64GB with 4 x 16GB for UDIMM ECC or 128GB with 4 x 32GB UDIMM non-ECC	
Memory Protection	ECC on models with UDIMM ECC memory	
Expansion slots	Three PCIe 3.0 slots as following:	
	Slot 1 PCIe 3.0 x16, full height, half length, links to CPU	
	Slot 2 PCIe 3.0 x1, full height, full length, links to PCH	
	Slot 3 PCIe 3.0 x16 (negotiable link width x4), full height, half length, links to PCH	
Processor graphics	Integrated Intel UHD Graphics P630 in -G suffix Xeon processors, or Intel UHD Graphics 630 in Core i7, i5, i3, or Pentium processors. Works along with discrete graphics to support multi-display, enables three rear display connectors (2 DP standard, 1 DP or HDMI optional)	

Components	Specification																																													
Discrete Graphics Offering	Up to two PCIe 3.0 x16 slots for discrete graphics card (Slot 1 and 3). Supports the following graphics adapters:																																													
	<table><tr><th>Graphics</th><th>Memory</th><th>Power</th><th>Connector</th><th>Max Qty</th></tr><tr><td>Quadro P400</td><td>2GB GDDR5</td><td>30W</td><td>3x miniDP</td><td>2</td></tr><tr><td>Quadro P620</td><td>2GB GDDR5</td><td>40W</td><td>4x miniDP</td><td>2</td></tr><tr><td>Quadro P1000</td><td>4GB GDDR5</td><td>50W</td><td>4x miniDP</td><td>2</td></tr><tr><td>Quadro P2000</td><td>5GB GDDR5</td><td>75W</td><td>4x DP</td><td>2</td></tr><tr><td>Quadro P2200</td><td>5GB GDDR5X</td><td>75W</td><td>4x DP</td><td>2</td></tr><tr><td>Quadro P4000</td><td>8GB GDDR5</td><td>105W</td><td>4x DP</td><td>1</td></tr><tr><td>Quadro P5000</td><td>16GB GDDR5X</td><td>180W</td><td>DVI-D DL + 4x DP</td><td>1</td></tr><tr><td>Quadro RTX 4000</td><td>8GB GDDR6</td><td>160W</td><td>3x DP, 1x VirtualLink</td><td>1</td></tr></table>	Graphics	Memory	Power	Connector	Max Qty	Quadro P400	2GB GDDR5	30W	3x miniDP	2	Quadro P620	2GB GDDR5	40W	4x miniDP	2	Quadro P1000	4GB GDDR5	50W	4x miniDP	2	Quadro P2000	5GB GDDR5	75W	4x DP	2	Quadro P2200	5GB GDDR5X	75W	4x DP	2	Quadro P4000	8GB GDDR5	105W	4x DP	1	Quadro P5000	16GB GDDR5X	180W	DVI-D DL + 4x DP	1	Quadro RTX 4000	8GB GDDR6	160W	3x DP, 1x VirtualLink	1
	Graphics	Memory	Power	Connector	Max Qty																																									
	Quadro P400	2GB GDDR5	30W	3x miniDP	2																																									
	Quadro P620	2GB GDDR5	40W	4x miniDP	2																																									
	Quadro P1000	4GB GDDR5	50W	4x miniDP	2																																									
	Quadro P2000	5GB GDDR5	75W	4x DP	2																																									
	Quadro P2200	5GB GDDR5X	75W	4x DP	2																																									
	Quadro P4000	8GB GDDR5	105W	4x DP	1																																									
	Quadro P5000	16GB GDDR5X	180W	DVI-D DL + 4x DP	1																																									
Quadro RTX 4000	8GB GDDR6	160W	3x DP, 1x VirtualLink	1																																										
Note: 2x Quadro P2000, Quadro P4000, Quadro P5000 or Quadro RTX 4000 needs 400W PSU																																														
Storage Controller	Storage Controller	Type	Interface	Disk Type	RAID																																									
	Onboard Intel RST SATA RAID	Std	SATA 6Gb/s	HDD or SSD	0/1/10/5																																									
	Onboard Intel RST PCIe RAID	Std	PCIe NVMe	M.2 PCIe SSD	0/1																																									
Storage Support	Disk Type	Interface	RPM	Offering	Max Qty																																									
	3.5" SATA HDD	SATA 6Gb/s	7.2K	1TB/2TB/4TB	3																																									
	2.5" SATA HDD	SATA 6Gb/s	7.2K	500GB FIPS	4																																									
	2.5" SATA SSD	SATA 6Gb/s		256GB/512GB/1TB	4																																									
	Optane Memory	PCIe NVMe		32GB	1, used with HDD/SSD																																									
	M.2 PCIe SSD	PCIe NVMe		256GB/512GB/1TB	3																																									
	Up to five bays with four disk bays plus one slim optical bay, supports up to 3x 3.5" HDD plus 1x 2.5" SSD, or 4x 2.5" HDD/SSD																																													
Storage Bays	Bay 1	Primary disk bay, 3.5" or 2.5"																																												
	Bay 2	2.5" SATA bay, cannot be available when 2nd Quadro P2000 is used																																												
	Bay 3	Secondary disk bay, 3.5" or 2.5"																																												
	Bay 4	5.25" Flex bay, supports one of the following: <ul style="list-style-type: none"><li>Flex module for optional front eSATA/Thunderbolt/IEEE1394</li><li>3rd disk bay, 3.5" or 2.5", removable, via Front Access Storage Enclosure, using SATA 4 connector as eSATA mode</li><li>3rd disk bay, 3.5" or 2.5", via 5.25" to 3.5" HDD Kit</li></ul>																																												
	Bay 5	9mm Slim ODD bay																																												
	M.2	3x M.2 SSD (1 onboard. 2 via PCIe to M.2 adapter)																																												
Media reader	Optional 7-in-1 card reader on most models																																													
Network interfaces	One onboard GbE port via integrated gigabit ethernet Intel i219LM, supports Wake-on-LAN. Optional PCIe ethernet adapters are available																																													
WLAN + Bluetooth	One dedicated onboard M.2 slot for optional Intel Wireless-AC 9560, 2x2, 2.4GHz/5GHz (160MHz channels), 802.11ac, Bluetooth 5, up to 1.73Gbps																																													
Security features	Power-on and admin password. Trusted Platform Module, TCG 2.0 compliant. Optional chassis intrusion switch, E-lock, cable lock, Kensington lock, and pad lock																																													
Intel vPro	Supports Intel vPro on Xeon and selected Core i7 or i5 models. vPro also requires Wireless-AC 9560 if Wi-Fi is needed																																													
Intel AMT	Intel Active Management Technology 12 on Xeon and selected Core i7 or i5 models. Intel Standard Manageability on other models																																													
Base warranty	US models comes with 3-year limited onsite service with 9x5/NBD. 1 or 3-year limited onsite service with 9x5/NBD in EMEA or other GEOs																																													
HD Audio	Intel HD Audio interface with Realtek ALC233 Codec																																													

Components	Specification
Front ports	2x USB 3.1 Gen 1 Type A. 2x USB 3.1 Gen 2 Type A. 1x USB 3.1 Gen 1 Type-C. 1x Mic-in. 1x Combo jack
Rear ports	2x USB 3.1 Gen 1 Type A. 2x USB 2.0 Type-A. 1x RJ-45. 1x COM. 2x DP. 1x Audio line-out <i>Notes: DP needs Core, Pentium, or -G suffix Xeon processor</i>
Optional front ports (on flex module)	2x Thunderbolt (USB Type-C), one of two ports supports video-out. 1x eSATA. 1x IEEE1394
Optional rear ports	Supports the following via cable: 1x COM. 1x Parallel. 2x PS/2. 1x DP or 1x HDMI. 2x USB 2.0 Supports the following via PCIe adapter: 4x COM. 2x USB 3.1 Type-C. 2x USB 3.1 Gen 1. 1x Thunderbolt. <i>Notes: DP or HDMI needs Core, Pentium, or -G suffix Xeon processor</i>
Temperature	Operating: 50 °F to 95 °F (10 °C to 35 °C) Non operating (no package): 14 °F to 140 °F (-10 °C to 60 °C) Non operating (with package): -40 °F to 140 °F (-40 °C to 60 °C)
Altitude	Operating: -15.2 m (-50 ft) to 3048 m (10 000 ft). Storage: -15.2 m (-50 ft) to 10, 668 m (35 000 ft)
Humidity	Operating: 30%~90%, non-condensing Storage (with package): 20%~90%, non-condensing
Environmental certification	RoHS-compliant. GREENGUARD. EPEAT Silver rating and ENERGY STAR 8 qualified
Power supply	Supports one 250W or 400W power supply, 100V - 240V, 92% PSU. Climate Savers Computing Platinum and 80 PLUS Platinum qualified. 400W PSU supports one 6+2-pin aux power connector.
ISV certifications	Please visit <a href="http://www.thinkworkstations.com/isv-certifications/">www.thinkworkstations.com/isv-certifications/</a>

Note:

1. Depending on many factors, actual data transfer speed mentioned on this page may be lower than theoretical speed.
2. Any questions or advice on ThinkStation PSREF, please contact [ThinkStation PSREF developer](#)







# ThinkStation P340 SFF Platform Specifications

Product Specifications Reference (PSREF)

Components	Specification											Components	Specification
Form factor	8.2L											Media reader	Optional SD reader on most models
Dimensions	Height: 339.5 mm (13.4 in). Width: 92.5 mm (3.6 in). Depth: 309.7 mm (9.3 in)											Network interfaces	One onboard GbE port via integrated gigabit ethernet Intel i219LM, supports Wake-on-LAN. Optional PCIe ethernet adapters are available
Weight	Maximum configuration: 12.46 lb (5.65 kg)											WLAN + Bluetooth	Optional Intel Wi-Fi 6 AX201, 2x2, 2.4GHz/5GHz (160MHz channels), WiFi 6, Bluetooth 5
Processor Sockets	1x FCLGA1200											Security features	Power-on and admin password. Trusted Platform Module, TCG 2.0 compliant. Optional chassis intrusion switch, E-lock, cable lock, Kensington lock, and pad lock
Processor Support	Up to one Xeon, Core i9, i7, i5, or i3 processor											Intel vPro	Supports Intel vPro on models with vPro-enable processor. vPro also requires AX201 if Wi-Fi function is needed
Processor	Processor Number	Cores	Threads	Base Frequency	Cache	TDP	Memory Types	ECC	Processor Graphics	vPro	Intel AMT	Intel Active Management Technology 14 on vPro models, Intel Standard Manageability on other models	
	Xeon W-1290	10	20	3.2GHz	20MB	80W	DDR4-2933	Yes	UHD P630	Yes	Base warranty	Most models comes with 3-year limited onsite service with 9x5/NBD. Other models may have 1 or 2-year limited onsite service	
	Xeon W-1270	8	16	3.4GHz	16MB	80W	DDR4-2933	Yes	UHD P630	Yes	HD Audio	Intel HD Audio interface with Realtek ALC623 Codec	
	Xeon W-1250	6	12	3.3GHz	12MB	80W	DDR4-2666	Yes	UHD P630	Yes	Front ports	2x USB-A 3.2 Gen 1, 2x USB-A 3.2 Gen 2, 1x USB-C 3.2 Gen 1, 1x Mic-in, 1x Combo jack	
	Core i9-10900	10	20	2.8GHz	20MB	65W	DDR4-2933	No	UHD 630	Yes	Rear ports	2x USB-A 3.2 Gen 1, 2x USB-A 2.0, 1x RJ-45, 1x COM, 2x DP, 1x Audio line-out	
	Core i7-10700	8	16	2.9GHz	16MB	65W	DDR4-2933	No	UHD 630	Yes	Optional rear ports	Supports the following via cable: 1x COM, 1x Parallel, 2x PS/2, 1x video (DP, HDMI, or USB-C), 2x USB 2.0, Supports the following via PCIe adapter: 4x COM*, 1x USB-C 3.2 Gen 2, 2x USB-A 3.2 Gen 1*, 1x Thunderbolt Notes: 4x COM and 2x USB-A 3.2 Gen 1 are special bids only.	
	Core i5-10600	6	12	3.3GHz	12MB	65W	DDR4-2666	No	UHD 630	Yes	Temperature	Operating: 50 °F to 95 °F (10 °C to 35 °C) Non operating (no package): 14 °F to 140 °F (-10 °C to 60 °C) Non operating (with package): -40 °F to 140 °F (-40 °C to 60 °C)	
	Core i5-10500	6	12	3.1GHz	12MB	65W	DDR4-2666	No	UHD 630	Yes	Altitude	Operating: -15.2 m (-50 ft) to 3048 m (10 000 ft). Storage: -15.2 m (-50 ft) to 10, 668 m (35 000 ft)	
	Core i5-10400	6	12	2.9GHz	12MB	65W	DDR4-2666	No	UHD 630	No	Humidity	Operating: 30%~90%, non-condensing Storage (with package): 20%~90%, non-condensing	
	Core i3-10320	4	8	3.8GHz	8MB	65W	DDR4-2666	No	UHD 630	No	Environmental certification	RoHS-compliant, EPEAT Silver rating, and ENERGY STAR 8 qualified	
Core i3-10300	4	8	3.7GHz	8MB	65W	DDR4-2666	No	UHD 630	No	Power supply	Supports one of the following: • 310W, 92% PSU, 100V - 240V, 80 PLUS Platinum qualified • 380W, 92% PSU, 100V - 240V, 80 PLUS Platinum qualified		
Core i3-10100	4	8	3.6GHz	6MB	65W	DDR4-2666	No	UHD 630	No	ISV certifications	Please visit <a href="http://www.thinkworkstations.com/isv-certifications/">www.thinkworkstations.com/isv-certifications/</a>		
Chipset	Intel W480 Chipset											Note: 1. Depending on many factors, actual data transfer speed mentioned on this page may be lower than theoretical speed. 2. Any questions or advice on ThinkStation PSREF, please contact <a href="#">Lenovo workstation PSREF developer</a>	
Memory Sockets	4 DIMM sockets with 2 channels												
Memory Types	8GB/16GB/32GB DDR4-2933 UDIMM ECC, or 4GB/8GB/16GB/32GB DDR4-2933 UDIMM non-ECC												
Memory Capacity	128GB												
Memory Protection	ECC. ECC memory and ECC-enable CPU are needed												
Expansion slots	Three PCIe 3.0 slots as following:												
	Slot 1	PCIe 3.0 x16, low profile, links to CPU											
	Slot 2	PCIe 3.0 x1, low profile, links to PCH											
	Slot 3	PCIe 3.0 x16 (negotiable link width x4), low profile, links to PCH											
Processor graphics	Integrated Intel UHD Graphics P630 in Xeon processors, or Intel UHD Graphics 630 in Core processors. Works along with discrete graphics to support multi-display, enables three rear display connectors (2 DP standard, 1 video port optional (Video port can be DP, HDMI, or USB-C))												
Discrete Graphics Offering	Graphics		Memory		Power		Connector		Max Qty				
	Quadro P400		2GB GDDR5		30W		3x miniDP		2				
	Quadro P620		2GB GDDR5		40W		4x miniDP		2				
	Quadro P1000		4GB GDDR5		50W		4x miniDP		2				
Storage Controller	Storage Controller			Type	Interface		Disk Type		RAID				
	Onboard Intel RST SATA RAID			Std	SATA 6Gb/s		HDD or SSD		0/1				
	Onboard Intel RST PCIe RAID			Std	PCIe NVMe		M.2 PCIe SSD		0/1				
Storage Support	Disk Type		Interface		RPM	Offering			Max Qty				
	3.5" SATA HDD		SATA 6Gb/s		7.2K	1TB/2TB/4TB/6TB			1				
	2.5" SATA HDD		SATA 6Gb/s		7.2K	1TB FIPS			2				
	2.5" SATA SSD		SATA 6Gb/s		-	512GB/1TB			2				
	M.2 PCIe SSD		PCIe NVMe		-	256GB/512GB/1TB/2TB			4				
	Optane Memory		PCIe NVMe		-	16GB			1				
Storage Bays	Bay 1	First 3.5" disk bay											
	Bay 2	First 2.5" SATA bay											
	Bay 3	9mm Slim ODD bay											
	Bay 4	Media reader											
	M.2	4x M.2 SSD (2 onboard, 2 via PCIe to M.2 adapter)											



# ThinkStation P340 Tiny Platform Specifications

Product Specifications Reference (PSREF)

Components	Specification							
Form factor	1L.							
	Optional VESA mount bracket kit, supports VESA 75mm and 100mm.							
	Optional floor stand for vertical orientation.							
	Optional tool-less chassis open.							
Dimensions	Optional dust filter							
	Height: 179 mm (7.0 in). Width: 37 mm (1.5 in). Depth: 182.9 mm (7.2 in)							
Weight	Maximum configuration: 3 lb (1.4kg)							
Processor	Processor Number	Cores	Threads	Base Frequency	Cache	TDP	Memory Types	vPro
	i9-10900T	10	20	1.9GHz	20MB	35W	DDR4-2933	Yes
	i9-10900	10	20	2.8GHz	20MB	65W	DDR4-2933	Yes
	i7-10700T	8	16	2.0GHz	16MB	35W	DDR4-2933	Yes
	i7-10700	8	16	2.9GHz	16MB	65W	DDR4-2933	Yes
	i5-10600T	6	12	2.4GHz	12MB	35W	DDR4-2666	Yes
	i5-10600	6	12	3.3GHz	12MB	65W	DDR4-2666	Yes
	i5-10500T	6	12	2.3GHz	12MB	35W	DDR4-2666	Yes
	i5-10500	6	12	3.1GHz	12MB	65W	DDR4-2666	Yes
	i5-10400T	6	12	2.0GHz	12MB	35W	DDR4-2666	No
	i5-10400	6	12	2.9GHz	12MB	65W	DDR4-2666	No
	i3-10320	4	8	3.8GHz	8MB	65W	DDR4-2666	No
	i3-10300T	4	8	3.0GHz	8MB	35W	DDR4-2666	No
	i3-10300	4	8	3.7GHz	8MB	65W	DDR4-2666	No
	i3-10100T	4	8	3.0GHz	6MB	35W	DDR4-2666	No
i3-10100	4	8	3.6GHz	6MB	65W	DDR4-2666	No	
Chipset	Intel Q470 Chipset							
Memory Sockets	2 DIMM sockets							
Memory Types	4GB/8GB/16GB/32GB DDR4-2933 SoDIMM non-ECC							
Memory Capacity	64GB (2x 32GB)							
Memory Protection	None							
Expansion slots	One PCIe slot via specific riser card: PCIe 3.0 x16 (negotiable link width x8) and low profile for discrete graphics card; PCIe 3.0 x4 and low profile for ethernet adapter and Thunderbolt adapter							
Processor graphics	Integrated Intel UHD Graphics 630. Works along with discrete graphics to support multi-display							
Discrete Graphics Offering	Graphics		Memory		Power	Connector		Max Qty
	Quadro P620		2GB GDDR5		40W	4x miniDP		1
	Quadro P1000		4GB GDDR5		50W	4x miniDP		1
Storage Controller	Supports M.2 SSD RAID 0 / 1, for special bids only							
Storage Support	Disk Type	Interface	RPM	Offering			Max Qty	
	M.2 PCIe SSD	PCIe NVMe	-	256GB/512GB/1TB/2T			2	
Storage Bays	Two M.2 slots for M.2 SSD							
Media reader	None							
Network interfaces	One onboard GbE port via integrated gigabit ethernet Intel i219LM, supports Wake on-LAN. Optional PCIe ethernet adapters are available							

Components	Specification
WLAN + Bluetooth	One dedicated M.2 slot for optional Wi-Fi card, supports one of the following: <ul style="list-style-type: none"> <li>Intel Wi-Fi 6 AX201, 2x2, 2.4GHz/5GHz (160MHz channels), Wi-Fi 6, Bluetooth 5</li> <li>Intel Wireless-AC 9560, 2x2, 2.4GHz/5GHz (160MHz channels), 802.11ac, Bluetooth 5</li> <li>Realtek 8822CE, 2x2, 2.4GHz/5GHz, 802.11ac, Bluetooth 5</li> </ul>
Security features	Power-on and admin password. Trusted Platform Module, TCG 2.0 compliant. Chassis intrusion switch. Kensington slot
Intel vPro	Supports vPro on models with the vPro enable processors vPro also requires Wi-Fi 6 AX201 if Wi-Fi is needed
Systems management	Intel Active Management Technology 14 on vPro models, Intel Standard Manageability on other models
Base warranty	Most models comes with 3-year limited onsite service with 9x5/NBD. Other models may have 1 or 2-year limited onsite service
HD Audio	Intel HD Audio interface with Realtek ALC233 Codec
Optical	Optional one 9.0mm optical drive via optical drive kit, DVD-ROM or DVD±RW.
Front standard ports	1x USB-A 3.2 Gen 2 (charging). 1x USB-C 3.2 Gen 1. 1x Combo jack
Rear standard ports	2x USB-A 3.2 Gen 2, 2x USB-A 3.2 Gen 1 (one supports smart power-on), 1x RJ-45, 1x DP, 1x HDMI, 1x security-lock slot, Wi-Fi antenna slot
Optional rear ports	Reserved area for two optional ports. Ports 1 supports one of the following: <ul style="list-style-type: none"> <li>1x USB-C, also supports DP function</li> <li>1x COM</li> <li>1x VGA</li> <li>1x DP</li> <li>1x HDMI</li> </ul>
	Port 2 supports 2nd COM. Also supports optional Thunderbolt or 2x USB-A 3.2 Gen 1
	Operating: 50 °F to 95 °F (10 °C to 35 °C) Non operating (no package): 14 °F to 140 °F (-10 °C to 60 °C) Non operating (with package): -40 °F to 140 °F (-40 °C to 60 °C)
Temperature	
Altitude	Operating: -15.2 m (-50 ft) to 3048 m (10 000 ft). Storage: -15.2 m (-50 ft) to 10, 668 m (35 000 ft)
Humidity	Operating: 20%~80%, non-condensing Storage (with package): 20%~90%, non-condensing
MIL-SPEC	Certified
Environmental certification	RoHS-compliant. GREENGUARD. EPEAT Silver rating and ENERGY STAR 8 qualified
Power supply	<ul style="list-style-type: none"> <li>170W power adapter, 100V - 240V, 89% PSU</li> <li>230W power adapter, 100V - 240V, 89% PSU</li> </ul>
ISV certifications	Please visit <a href="http://www.thinkworkstations.com/isv-certifications/">www.thinkworkstations.com/isv-certifications/</a>



# ThinkStation P340 Tower Platform Specifications

Product Specifications Reference (PSREF)

Components		Specification									
Form factor	17L Tower										
Dimensions	Height: 376 mm (14.8 in). Width: 170 mm (6.7 in). Depth: 315.35 mm (12.4 in)										
Weight	Maximum configuration: 20.68 lb (9.38 kg)										
Processor Sockets	1x FCLGA1200										
Processor Support	Up to one Xeon, Core i9, i7, i5, or i3 processor										
Processor	Processor Number	Cores	Threads	Base Frequency	Cache	TDP	Memory Types	ECC	Processor Graphics	vPro	
	Xeon W-1290P	10	20	3.7GHz	20MB	125W	DDR4-2933	Yes	UHD P630	Yes	
	Xeon W-1290	10	20	3.2GHz	20MB	80W	DDR4-2933	Yes	UHD P630	Yes	
	Xeon W-1270P	8	16	3.8GHz	16MB	125W	DDR4-2933	Yes	UHD P630	Yes	
	Xeon W-1270	8	16	3.4GHz	16MB	80W	DDR4-2933	Yes	UHD P630	Yes	
	Xeon W-1250P	6	12	4.1GHz	12MB	125W	DDR4-2666	Yes	UHD P630	Yes	
	Xeon W-1250	6	12	3.3GHz	12MB	80W	DDR4-2666	Yes	UHD P630	Yes	
	Core i9-10900K	10	20	3.7GHz	20MB	125W	DDR4-2933	No	UHD 630	Yes	
	Core i9-10900	10	20	2.8GHz	20MB	65W	DDR4-2933	No	UHD 630	Yes	
	Core i7-10700K	8	16	3.8GHz	16MB	125W	DDR4-2933	No	UHD 630	Yes	
	Core i7-10700	8	16	2.9GHz	16MB	65W	DDR4-2933	No	UHD 630	Yes	
	Core i5-10600K	6	12	4.1GHz	12MB	125W	DDR4-2666	No	UHD 630	Yes	
	Core i5-10600	6	12	3.3GHz	12MB	65W	DDR4-2666	No	UHD 630	Yes	
	Core i5-10500	6	12	3.1GHz	12MB	65W	DDR4-2666	No	UHD 630	Yes	
	Core i5-10400	6	12	2.9GHz	12MB	65W	DDR4-2666	No	UHD 630	No	
	Core i3-10320	4	8	3.8GHz	8MB	65W	DDR4-2666	No	UHD 630	No	
	Core i3-10300	4	8	3.7GHz	8MB	65W	DDR4-2666	No	UHD 630	No	
	Core i3-10100	4	8	3.6GHz	6MB	65W	DDR4-2666	No	UHD 630	No	
Chipset	Intel W480 Chipset										
Memory Sockets	4 DIMM sockets with 2 channels										
Memory Types	8GB/16GB/32GB DDR4-2933 UDIMM ECC, or 4GB/8GB/16GB/32GB DDR4-2933 UDIMM non-ECC										
Memory Capacity	128GB										
Memory Protection	ECC. ECC memory and ECC-enable CPU are needed										
Expansion slots	Three PCIe 3.0 slots as following:										
	Slot 1	PCIe 3.0 x16, full height, full length, links to CPU									
	Slot 2	PCIe 3.0 x1, full height, full length, links to PCH									
	Slot 3	PCIe 3.0 x16 (negotiable link width x4), full height, full length, links to PCH									
Processor graphics	Integrated Intel UHD Graphics P630 in Xeon processors, or Intel UHD Graphics 630 in Core processors. Works along with discrete graphics to support multi-display, enables three rear display connectors (2 DP standard, 1 video port optional (Video port can be DP, HDMI, or USB-C))										
Discrete Graphics Offering	Graphics		Memory		Power		Connector		Max Qty		
	Quadro P400		2GB GDDR5		30W		3x miniDP		2		
	Quadro P620		2GB GDDR5		40W		4x miniDP		2		
	Quadro P1000		4GB GDDR5		50W		4x miniDP		2		
	Quadro P2200		5GB GDDR5X		75W		4x DP		2		
	Quadro RTX 4000		8GB GDDR6		160W		3x DP, 1x VirtualLink		1		
	Quadro RTX 5000		16GB GDDR6		265W		4x DP, 1x VirtualLink		1		
Notes: RTX 4000/RTX 5000/2x P2200 needs 500W PSU.											
Storage Controller	Storage Controller		Type	Interface	Disk Type		RAID				
	Onboard Intel RST SATA RAID		Std	SATA 6Gb/s	HDD or SSD		0/1/10/5				
	Onboard Intel RST PCIe RAID		Std	PCIe NVMe	M.2 PCIe SSD		0/1				
Notes: RAID 5 and 10 are available on 2.5" HDD/SSD.											

Components		Specification				
Storage Support	Disk Type	Interface	RPM	Offering	Max Qty	
	3.5" SATA HDD	SATA 6Gb/s	7.2K	1TB/2TB/4TB/6TB	2	
	2.5" SATA HDD	SATA 6Gb/s	7.2K	1TB FIPS	4	
	2.5" SATA SSD	SATA 6Gb/s	-	512GB/1TB	4	
	M.2 PCIe SSD	PCIe NVMe	-	256GB/512GB/1TB/2TB	4	
Optane Memory	PCIe NVMe	-	16GB	1		
Storage Bays	Bay 1	First 3.5" disk bay				
	Bay 2	First 2.5" SATA bay				
	Bay 3	Secondary 3.5" disk bay				
	Bay 4	Secondary 2.5" disk bay				
	Bay 5	9mm Slim ODD bay				
	Bay 6	Media reader				
	M.2	4x M.2 SSD (2 onboard, 2 via PCIe to M.2 adapter)				
Media reader	Optional SD reader on most models					
Network interfaces	One onboard GbE port via integrated gigabit ethernet Intel i219LM, supports Wake-on-LAN. Optional PCIe ethernet adapters are available					
WLAN + Bluetooth	Optional Intel Wi-Fi 6 AX201, 2x2, 2.4GHz/5GHz (160MHz channels), WiFi 6, Bluetooth 5					
Security features	Power-on and admin password. Trusted Platform Module, TCG 2.0 compliant. Optional chassis intrusion switch, E-lock, cable lock, Kensington lock, and pad lock					
Intel vPro	Supports Intel vPro on Xeon and selected Core i7 or i5 models. vPro also requires AX201 if Wi-Fi function is needed					
Intel AMT	Intel Active Management Technology 14 on vPro models, Intel Standard Manageability on other models					
Base warranty	Most models comes with 3-year limited onsite service with 9x5/NBD. Other models may have 1 or 2-year limited onsite service					
HD Audio	Intel HD Audio interface with Realtek ALC623 Codec					
Front ports	2x USB-A 3.2 Gen 1, 2x USB-A 3.2 Gen 2, 1x USB-C 3.2 Gen 1, 1x Mic-in, 1x Combo jack					
Rear ports	2x USB-A 3.2 Gen 1, 2x USB-A 2.0, 1x RJ-45, 1x COM, 2x DP, 1x Audio line-out					
Optional rear ports	Supports the following via cable: 1x COM, 1x Parallel, 2x PS/2, 1x video (DP, HDMI, or USB-C), 2x USB 2.0, Supports the following via PCIe adapter: 4x COM*, 1x USB-C 3.2 Gen 2, 2x USB-A 3.2 Gen 1*, 1x Thunderbolt Notes: 4x COM and 2x USB-A 3.2 Gen 1 are special bids only.					
Temperature	Operating: 50 °F to 95 °F (10 °C to 35 °C) Non operating (no package): 14 °F to 140 °F (-10 °C to 60 °C) Non operating (with package): -40 °F to 140 °F (-40 °C to 60 °C)					
Altitude	Operating: -15.2 m (-50 ft) to 3048 m (10 000 ft). Storage: -15.2 m (-50 ft) to 10, 668 m (35 000 ft)					
Humidity	Operating: 30%~90%, non-condensing Storage (with package): 20%~90%, non-condensing					
Environmental certification	RoHS-compliant, EPEAT Silver rating, and ENERGY STAR 8 qualified					
Power supply	Supports one of the following: • 300W, 90% PSU, 100V - 240V, 80 PLUS Gold qualified • 500W, 92% PSU, 100V - 240V, 80 PLUS Platinum qualified					
ISV certifications	Please visit <a href="http://www.thinkworkstations.com/isv-certifications/">www.thinkworkstations.com/isv-certifications/</a>					
Note: 1. Depending on many factors, actual data transfer speed mentioned on this page may be lower than theoretical speed. 2. Any questions or advice on ThinkStation PSREF, please contact <a href="#">Lenovo workstation PSREF developer</a>						





# ThinkStation P520 Platform Specifications - I of II

Product Specifications Reference (PSREF)

Form factor	33L Tower						
Dimensions	165mm/6.5" W x 460mm/18.1" D x 440mm/17.3" H (with feet)						
Weight	Maximum configuration: 52.91 lb (24kg)						
Processor Support	Processor	# of Cores	# of Threads	Base Frequency	Cache	TDP	Memory Types
	Xeon W-2295	18	36	3.0GHz	24.75MB	165W	DDR4-2933
	Xeon W-2275	14	28	3.3GHz	19.25MB	165W	DDR4-2933
	Xeon W-2265	12	24	3.5GHz	19.25MB	165W	DDR4-2933
	Xeon W-2255	10	20	3.7GHz	19.25MB	165W	DDR4-2933
	Xeon W-2245	8	16	3.9GHz	16.5MB	155W	DDR4-2933
	Xeon W-2235	6	12	3.8GHz	8.25MB	130W	DDR4-2933
	Xeon W-2225	4	8	4.1GHz	8.25MB	105W	DDR4-2933
	Xeon W-2223	4	8	3.6GHz	8.25MB	120W	DDR4-2666
	Xeon W-2195	18	36	2.3GHz	24.75MB	140W	DDR4-2666
	Xeon W-2175	14	28	2.5GHz	19MB	140W	DDR4-2666
	Xeon W-2155	10	20	3.3GHz	13.75MB	140W	DDR4-2666
	Xeon W-2145	8	16	3.7GHz	11MB	140W	DDR4-2666
	Xeon W-2135	6	12	3.7GHz	8.25MB	140W	DDR4-2666
	Xeon W-2133	6	12	3.6GHz	8.25MB	140W	DDR4-2666
	Xeon W-2125	4	8	4.0GHz	8.25MB	120W	DDR4-2666
	Xeon W-2123	4	8	3.6GHz	8.25MB	120W	DDR4-2666
	Xeon W-2104	4	4	3.2GHz	8.25MB	120W	DDR4-2400
	Xeon W-2102	4	4	2.9GHz	8.25MB	120W	DDR4-2400
Processor Sockets	1x FCLGA2066						
Chipset	Intel C422 Chipset						
Memory Sockets	8 DIMM sockets with 4 channels						
Memory Types	DDR4-2666 RDIMM or DDR4-2933 RDIMM						
Memory Capacity	512GB with 8 x 64GB DDR4-2933 RDIMMs						
Memory Protection	ECC						
Expansion slots	Slot 1 (CPU)	PCIe 3.0 x8, full height, full length, 25W, open ended					
	Slot 2 (CPU)	PCIe 3.0 x16, full height, full length, 75W, double-width					
	Slot 3 (PCH)	PCIe 3.0 x4, full height, half length, 25W, open ended					
	Slot 4 (CPU)	PCIe 3.0 x16, full height, full length, 75W, double-width					
	Slot 5	PCI, full height, full length, 25W					
	Slot 6 (PCH)	PCIe 3.0 x4, full height, half length, 25W, open ended					
Discrete Graphics Offering	Graphics	Memory	Power	Connector	SLI / NVLink	Max Qty	
	NVS 810	4GB DDR3	68W	8xmini DP		2	
	Quadro P400	2GB GDDR5	30W	3xminiDP		2	
	Quadro P600	2GB GDDR5	45W	4xminiDP		2	
	Quadro P620	2GB GDDR5	40W	4xminiDP		2	
	Quadro P1000	4GB GDDR5	50W	4xminiDP		2	
	Quadro P2000	5GB GDDR5	75W	4xDP		2	
	Quadro P4000	8GB GDDR5	120W	4xDP		2	
	Quadro P5000	16GB GDDR5X	180W	DVI-D DL+4xDP	SLI	2	
	Quadro P6000	24GB GDDR5X	250W	DVI-D DL+4xDP		1	
	Quadro RTX 4000	8GB GDDR6	160W	3xDP, 1xVirtualLink		2	
	Quadro RTX 5000	16GB GDDR6	265W	4xDP, 1xVirtualLink	NVLink	2	
	Quadro RTX 6000	24GB GDDR6	295W	4xDP, 1xVirtualLink	NVLink	2	
	Quadro RTX 8000	48GB GDDR6	295W	4xDP, 1xVirtualLink		1	
	Quadro GP100	16GB HBM2	235W	1xDVI-D DL, 4xDP	NVLink	2	
	Quadro GV100	32GB HBM2	250W	4xDP		1	
Storage Controller	Storage Controller	Type	Interface	RAID	Cache		
	Onboard Intel RSTe	Std	SATA 6Gb/s	0/1/10/5			
	9440-8i PCIe	Opt	SAS 12Gb/s, SATA 6Gb/s	0/1/10/5			
	9460-16i PCIe	Opt	SAS 12Gb/s, SATA 6Gb/s	0/1/10/5/6	4GB DDR4, SuperCap		
	NVMe Basic	Opt	PCIe NVMe	0/1/10			
	NVMe Premium	Opt	PCIe NVMe	0/1/10/5			
	NVMe for Intel SSD	Opt	PCIe NVMe	0/1/10/5			

Storage Support	Disk Type	Interface	RPM	Offering	Max Qty	
	3.5" SATA HDD	SATA 6Gb/s	7.2K	1TB/2TB/4TB/6TB	6	
	2.5" SATA HDD	SATA 6Gb/s	7.2K	500GB/500GB FIPS	6	
	2.5" SATA SSD	SATA 6Gb/s		256GB/512GB/1TB/2TB	6	
	2.5" SAS HDD	SAS 12Gb/s	10K	300GB/600GB	4	
	M.2 PCIe SSD	PCIe NVMe		256GB/512GB/1TB/2TB	9	
	PCIe AIC SSD	PCIe NVMe		480GB	2 (1 when quad M.2 adapter used)	
Storage Bays	Bay Type	Maximum Drives Qty				
	M.2 slot	9x M.2 SSD (2 onboard, 7 via PCIe to M.2 adapter)				
	Flex Bay	2 flex bays. Supports the following: <ul style="list-style-type: none"><li>• 2x half-height optical drives</li><li>• 2x 5.25" 9.0mm optical drives</li><li>• 1x 5.25" 9.0mm optical drive + 2x 3.5"/2.5" SATA SSD/HDD</li><li>• 1x 3.5"/2.5" SATA SSD/HDD with Front Access Storage Enclosure</li><li>• 1x flex module for the following options:<ul style="list-style-type: none"><li>Tray 1: 9.0mm optical</li><li>Tray 2: 15-in-1 USB 3.1 Gen 1 reader, 2x Thunderbolt, or 4-digit diagnostic display</li><li>Port 1 and 2: Front USB 3.1 Gen 1 Type-C or eSATA</li></ul></li><li>• 2x M.2 SSD with 2x Front Removable Drive Enclosures</li></ul>				
		Disk bay	Up to 4x 3.5" or 2.5" disks with 4 disk bays (2 bays standard, 2 bays optional)			
Max Storage	Supports up to 9x M.2 SSD + 6x 3.5" HDD/6x 2.5" SATA disks/4x 2.5" SAS HDD + 1x PCIe AIC SSD. All HDD: 36TB using 6x 3.5" HDD All SSD: 30.48TB using 6x 2.5" SATA SSD, 9x M.2 SSD, and 1x PCIe AIC SSD					
Power supply	Supports one of the following: <ul style="list-style-type: none"><li>• One fixed 690W, autosensing, 92%, 80 PLUS Platinum qualified</li><li>• One fixed 900W, autosensing, 92%, 80 PLUS Platinum qualified</li><li>• One fixed 1000W, autosensing, 92%, 80 PLUS Platinum qualified</li></ul>					
Media reader	USB 2.0 9-in-1 card reader on most models. Optional UHS-II 15-in-1 USB 3.1 Gen 1 reader on flex module					
Network interfaces	Integrated one gigabit ethernet (Intel i219LM), supports Wake-on-LAN. Optional PCIe ethernet or wireless adapters are available					
WLAN + Bluetooth	Optional Intel Wireless-AC 8265, 2x2, 2.4GHz/5GHz, 802.11ac, Bluetooth 4.2, up to 867Mbps					
Security features	Power-on and admin password. Trusted Platform Module, TCG 2.0 compliant, switch to 1.2 via UEFI setting. Optional access panel lock, Kensington lock					
Intel vPro	Intel vPro technology supported. vPro requires Wireless-AC 8265 if Wi-Fi is needed					
Intel AMT	Intel Active Management Technology 11					
Diagnostic	Front panel warning LED. ThinkStation Diagnostics for Windows. Photo-audio transfer with Lenovo PC Diag-nostics for Android and iOS. Optional front 4-digit diagnostic display on flex module					
Base warranty	1 or 3-year limited onsite service with 9x5/NBD					
HD Audio	Realtek ALC662 codec					
Front ports	4x USB 3.1 Gen 1 (includes one 11W charging), 1x combo audio/microphone jack (3.5mm)					
Rear ports	2x USB 2.0, 4x USB 3.1 Gen 1, 1x RJ-45, 3x analog audio ports (line-in, line-out, mic-in), 2x PS/2					
Optional ports	Front: <ul style="list-style-type: none"><li>• 2x Thunderbolt ports (USB Type-C) on flex module, one of two ports supports video-out</li><li>• 1x eSATA on flex module</li><li>• 1x USB Type-C on flex module, USB 3.1 Gen 1</li></ul>					
	Rear: <ul style="list-style-type: none"><li>• 1x COM port</li><li>• 2x USB Type-C ports via PCIe adapter, USB 3.1 gen 2. One 15W, one 5W</li></ul>					
	Internal: <ul style="list-style-type: none"><li>• 1x internal USB 3.1 Gen 1 port</li></ul>					

Environmental specification	Temperature - operating	50 °F to 95 °F (10 °C to 35 °C)
	Temperature - storage (no package)	14 °F to 140 °F (-10 °C to 60 °C)
	Temperature - storage (with package)	-40 °F to 140 °F (-40 °C to 60 °C)
	Altitude - operating	(Unpressurized): -50ft-10000ft (-15.2m-3048m)
	Humidity - operating	10%~80%, non-condensing
	Humidity - storage (with package)	10%~90%, non-condensing
Environmental Certifications	RoHS-compliant. GREENGUARD. EPEAT Silver rating. ENERGY STAR 8.0 qualified on selected models	
ISV certifications	Please visit <a href="http://www.thinkworkstations.com/isv-certifications/">www.thinkworkstations.com/isv-certifications/</a>	

Note:

1. Depending on many factors, actual data transfer speed mentioned on this page may be lower than theoretical speed.

2. To support the maximum expandability, 900W power supply may be needed.

3. Any questions or advice on ThinkStation PSREF, please contact [ThinkStation PSREF developer](#)





# ThinkStation P520c Platform Specifications

Product Specifications Reference (PSREF)

Form factor	25L Tower						
Dimensions	175mm/6.89" W x 426mm/16.77" D x 376mm/14.8" H (with feet)						
Weight	Maximum configuration: 31.97 lb (14.5kg)						
Processor Support	Processor	# of Cores	# of Threads	Base Frequency	Cache	TDP	Memory Types
	Xeon W-2245	8	16	3.9GHz	16.5MB	155W	DDR4-2933
	Xeon W-2235	6	12	3.8GHz	8.25MB	130W	DDR4-2933
	Xeon W-2225	4	8	4.1GHz	8.25MB	105W	DDR4-2933
	Xeon W-2223	4	8	3.6GHz	8.25MB	120W	DDR4-2666
	Xeon W-2195	18	36	2.3GHz	24.75MB	140W	DDR4-2666
	Xeon W-2175	14	28	2.5GHz	19MB	140W	DDR4-2666
	Xeon W-2155	10	20	3.3GHz	13.75MB	140W	DDR4-2666
	Xeon W-2145	8	16	3.7GHz	11MB	140W	DDR4-2666
	Xeon W-2135	6	12	3.7GHz	8.25MB	140W	DDR4-2666
	Xeon W-2133	6	12	3.6GHz	8.25MB	140W	DDR4-2666
	Xeon W-2125	4	8	4.0GHz	8.25MB	120W	DDR4-2666
	Xeon W-2123	4	8	3.6GHz	8.25MB	120W	DDR4-2666
	Xeon W-2104	4	4	3.2GHz	8.25MB	120W	DDR4-2400
	Xeon W-2102	4	4	2.9GHz	8.25MB	120W	DDR4-2400
Processor Sockets	1x FCLGA2066						
Chipset	Intel C422 Chipset						
Memory Sockets	4 DIMM sockets with 4 channels						
Memory Types	DDR4-2666 RDIMM or DDR4-2933 RDIMM						
Memory Capacity	256GB with 4 x 64GB RDIMMs						
Memory Protection	ECC						
Expansion slots	Slot 1 (CPU)	PCIe 3.0 x16, full height, full length, 75W,					
	Slot 2 (CPU)	PCIe 3.0 x8, full height, full length, 25W, open ended					
	Slot 3 (CPU)	PCIe 3.0 x16, full height, full length, 75W					
	Slot 4 (PCH)	PCIe 3.0 x4, full height, half length, 25W, open ended					
Discrete Graphics Offering	Graphics	Memory		Power	Connector	SLI / NVLink	Max Qty
	NVS 810	4GB DDR3		68W	8xmini DP	-	1
	Quadro P400	2GB GDDR5		30W	3xminiDP	-	2
	Quadro P600	2GB GDDR5		45W	4xminiDP	-	2
	Quadro P620	2GB GDDR5		40W	4x miniDP	-	2
	Quadro P1000	4GB GDDR5		50W	4xminiDP	-	2
	Quadro P2000	5GB GDDR5		75W	4xDP	-	2
	Quadro P4000	8GB GDDR5		120W	4xDP	-	2
	Quadro P5000	16GB GDDR5X		180W	DVI-D DL+4xDP	-	1
	Quadro RTX 4000	8GB GDDR6		160W	3xDP, 1xVirtualLink	-	1
	Quadro RTX 5000	16GB GDDR6		265W	4xDP, 1xVirtualLink	-	1
Storage Controller	Storage Controller	Type	Interface		RAID	Cache	
	Onboard Intel RSTe	Std	SATA 6Gb/s		0/1/10/5	-	
	9440-8i PCIe	Opt	SAS 12Gb/s, SATA 6Gb/s		0/1/10/5	-	
	NVMe Basic	Opt	PCIe NVMe		0/1/10	-	
	NVMe for Intel SSD	Opt	PCIe NVMe		0/1/10/5	-	
Storage Support	Disk Type	Interface	RPM	Offering		Max Qty	
	3.5" SATA HDD	SATA 6Gb/s	7.2K	1TB/2TB/4TB/6TB		4	
	2.5" SATA HDD	SATA 6Gb/s	7.2K	500GB/500GB FIPS		4	
	2.5" SATA SSD	SATA 6Gb/s		256GB/512GB/1TB/2TB		4	
	2.5" SAS HDD	SAS 12Gb/s	10K	300GB/600GB		4	
	M.2 PCIe SSD	PCIe NVMe		256GB/512GB/1TB/2TB		5	

Storage Bays	Bay Type	Maximum Drives Qty	
	M.2 slot	5x M.2 SSD (2 onboard, 3 via PCIe to M.2 adapter)	
	Flex Bay	2 flex bays. Supports the following: <ul style="list-style-type: none"><li>• 2x half-height optical drives</li><li>• 2x 5.25" 9.0mm optical drives</li><li>• 1x 5.25" 9.0mm optical drive + 2x 3.5"/2.5" SATA SSD/HDD</li><li>• 1x 3.5"/2.5" SATA SSD/HDD with Front Access Storage Enclosure</li><li>• 1x flex module for the following options:<ul style="list-style-type: none"><li>Tray 1: 9.0mm optical</li><li>Tray 2: 15-in-1 USB 3.1 Gen 1 reader, 2x Thunderbolt, or 4-digit diagnostic display</li><li>Port 1 and 2: Front USB 3.1 Gen 1 Type-C or eSATA</li></ul></li><li>• 2x M.2 SSD with 2x Front Removable Drive Enclosures</li></ul>	
	Disk bay	Up to 2x 3.5"/2.5" disks with 2 disk bays	
Power supply	One of the following: <ul style="list-style-type: none"><li>• One fixed 500W, autosensing, 92%, 80 PLUS Platinum qualified</li><li>• One fixed 625W, autosensing, 92%, 80 PLUS Platinum qualified</li></ul>		
Media reader	USB 2.0 9-in-1 card reader on most models. Optional UHS-II 15-in-1 USB 3.1 Gen 1 reader on flex module		
Network interfaces	Integrated one gigabit ethernet (Intel i219LM), supports Wake-on-LAN. Optional PCIe ethernet or wireless adapters are available		
WLAN + Bluetooth	Optional Intel Wireless-AC 8265, 2x2, 2.4GHz/5GHz, 802.11ac, Bluetooth 4.2, up to 867Mbps		
Security features	Power-on and admin password. Trusted Platform Module, TCG 2.0 compliant, switch to 1.2 via UEFI setting. Optional access panel lock, Kensington lock		
Intel vPro	Intel vPro technology supported. vPro requires Wireless-AC 8265 if Wi-Fi is needed		
Intel AMT	Intel Active Management Technology 11		
Diagnostic	ThinkStation Diagnostics for Windows. Optional front 4-digit diagnostic display on flex module		
Base warranty	1 or 3-year limited onsite service with 9x5/NBD		
HD Audio	Realtek ALC662 codec		
Front ports	2x USB 3.1 Gen 1, microphone (3.5mm), headphone (3.5mm)		
Rear ports	2x USB 2.0, 4x USB 3.1 Gen 1, 1x RJ-45, 3x analog audio ports (line-in, line-out, mic-in), 2x PS/2		
Optional ports	Supports the following optional ports: Front: <ul style="list-style-type: none"><li>• 2x Thunderbolt ports (USB Type-C) on flex module, one of two ports supports video-out</li><li>• 1x eSATA on flex module</li><li>• 1x USB Type-C on flex module, USB 3.1 Gen 1</li></ul> Rear: <ul style="list-style-type: none"><li>• 1x COM port</li><li>• 2x USB Type-C ports via PCIe adapter, USB 3.1 gen 2. One 15W, one 5W</li></ul> Internal: <ul style="list-style-type: none"><li>• 1x internal USB 3.1 Gen 1 port</li></ul>		
Environmental specification	Temperature - operating	50 ° F to 95 ° F (10 ° C to 35 ° C)	
	Temperature - storage (no pack-age)	14 ° F to 140 ° F (-10 ° C to 60 ° C)	
	Temperature - storage (with pack-age)	-40 ° F to 140 ° F (-40 ° C to 60 ° C)	
	Altitude - operating	(Unpressurized): -50ft-10000ft (-15.2m-3048m)	
	Humidity - operating	10%~80%, non-condensing	
	Humidity - storage (with package)	10%~90%, non-condensing	
Environmental Certifications	RoHS-compliant. GREENGUARD. EPEAT Silver rating. ENERGY STAR 8.0 qualified on selected models		
ISV certifications	Please visit <a href="http://www.thinkworkstations.com/isv-certifications/">www.thinkworkstations.com/isv-certifications/</a>		

Note:

1. Depending on many factors, actual data transfer speed mentioned on this page may be lower than theoretical speed.
2. Any questions or advice on ThinkStation PSREF, please contact [ThinkStation PSREF developer](#)



# ThinkStation P620 Platform Specifications

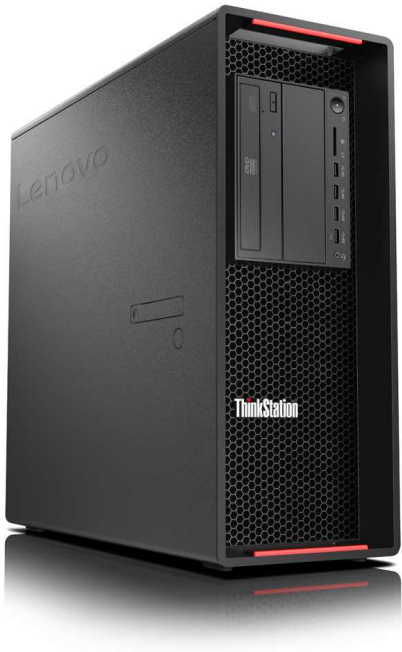
Product Specifications Reference (PSREF)

Form factor	33L Tower						
Dimensions	165mm/6.5" W x 460mm/18.1" D x 446mm/17.6" H (with feet)						
Weight	Maximum configuration: 52.91 lb (24kg)						
Processor Support	Processor	# of Cores	# of Threads	Base Frequency	Cache	TDP	Memory Types
	AMD Ryzen Threadripper PRO 3995WX	64	128	2.7GHz	256MB L3	280W	DDR4-3200
	AMD Ryzen Threadripper PRO 3975WX	32	64	3.5GHz	128MB L3	280W	DDR4-3200
	AMD Ryzen Threadripper PRO 3955WX	16	32	3.9GHz	64MB L3	280W	DDR4-3200
	AMD Ryzen Threadripper PRO 3945WX	12	24	4.0GHz	64MB L3	280W	DDR4-3200
Processor Sockets	1x Socket sWRX4						
Chipset	AMD WRX80						
Memory Sockets	8 DIMM sockets with 8 channels						
Memory Types	DDR4-3200 RDIMM ECC, 8GB / 16GB / 32GB / 64GB available						
Memory Capacity	512GB with 8 x 64GB DDR4-3200 RDIMMs						
Memory Protection	ECC						
Expansion slots	Slot 1 (CPU)	PCIe 4.0 x16, full height, full length					
	Slot 2 (CPU)	PCIe 4.0 x8, full height, full length					
	Slot 3 (CPU)	PCIe 4.0 x16, full height, full length					
	Slot 4 (CPU)	PCIe 4.0 x16, full height, full length					
	Slot 5 (CPU)	PCIe 4.0 x16, full height, full length					
	Slot 6 (IOH)	PCIe 4.0 x8, full height, full length					
Discrete Graphics Offering	Graphics	Memory	Pow-er	Connector	SLI / NVlink	Max Qty	
	Quadro P620	2GB GDDR5	40W	4xminiDP	-	4	
	Quadro P1000	4GB GDDR5	50W	4xminiDP	-	4	
	Quadro P2200	5GB GDDR5	75W	4xDP	-	4	
	Quadro RTX 4000	8GB GDDR6	160W	3xDP, 1xVirtualLink	-	4	
	Quadro RTX 5000	16GB GDDR6	265W	4xDP, 1xVirtualLink	NVLink	2	
	Quadro RTX 6000	24GB GDDR6	295W	4xDP, 1xVirtualLink	NVLink	2	
	Quadro RTX 8000	48GB GDDR6	295W	4xDP, 1xVirtualLink	NVLink	2	
	Quadro GV100	32GB HBM2	250W	4xDP	NVLink	2	
Storage Controller	Storage Controller	Type	Interface	RAID	Cache		
	Integrated SATA controller	Std	SATA 6Gb/s	0/1/10/5	-		
	Integrated NVMe controller	Std	PCIe NVMe	0/1/10/5	-		
Storage Type	Disk Type	Interface	RPM	Offering			
	3.5" SATA HDD	SATA 6Gb/s	7.2K	1TB/2TB/4TB			
	M.2 PCIe SSD	PCIe 3.0 NVMe	-	256GB/512GB/1TB/2TB			
	M.2 PCIe SSD	PCIe 4.0 NVMe*	-	256GB/512GB/1TB			
* M.2 PCIe 4.0 SSD is available later this year							
Storage Support	Up to 5x 3.5" SATA HDD: • 4x 3.5" HDD bay • 1x Flex Bay ( Front Access Storage Enclosure or 5.25" Slim ODD and HDD cage)						
	Up to 11x M.2 SSD: • 2 via onboard M.2 • 8 via two quad M.2 to PCIe adapter (only supports PCIe 3.0 SSD) • 1 via Single M.2 to PCIe adapter (only supports PCIe 3.0 SSD)						
Power supply	One fixed 1000W, autosensing, 92%, 80 PLUS Platinum qualified						
Optical	Optional one slim optical, DVD or DVD±RW						
Media reader	Optional UHS-II 15-in-1 USB 3.2 Gen 1 reader on flex module						
Network interfaces	Integrated one 10GbE ethernet (Marvell AQtion AQN-107). Optional PCIe ethernet or wireless adapters are available						
WLAN + Bluetooth	Optional Intel Wireless-AC 9260, 2x2, 2.4GHz/5GHz, 802.11ac, Bluetooth 5.1						

Security features	Power-on and admin password. Trusted Platform Module, TCG 2.0 compliant. Chassis intrusion switch. Optional access panel lock, Kensington lock	
System Mgmt	AMD Pro Manageability	
Diagnostic	Front panel warning LED. Front 4-digit diagnostic. ThinkStation Diagnostics for Windows. Photo-audio transfer with Lenovo PC Diagnostics for Android and iOS.	
Base warranty	Most models comes with 3-year limited onsite service with 9x5/NBD	
HD Audio	Realtek ALC4050H codec	
Front ports	2x USB-A 3.2 Gen 2 (includes one 11W charging), 2x USB-C 3.2 Gen 2 (15W), 1x combo audio / microphone jack (3.5mm)	
Rear ports	2x USB-A 2.0, 4x USB-A 3.2 Gen 2, 1x 10GbE RJ-45, 3x analog audio ports (line-in, line-out, mic-in), 2x PS/2	
Optional ports	Optional one COM port	
Environmental specification	Temperature - operating	50 °F to 95 °F (10 °C to 35 °C)
	Temperature - storage (no package)	14 °F to 140 °F (-10 °C to 60 °C)
	Temperature - storage (with package)	-40 °F to 140 °F (-40 °C to 60 °C)
	Altitude - operating	(Unpressurized): -50ft-10000ft (-15.2m-3048m)
	Humidity - operating	10%~80%, non-condensing
	Humidity - storage (with package)	10%~90%, non-condensing
Environmental Certifications	RoHS-compliant. GREENGUARD. EPEAT Silver rating. ENERGY STAR 8.0 qualified	
ISV certifications	Please visit <a href="http://www.thinkworkstations.com/isv-certifications/">www.thinkworkstations.com/isv-certifications/</a>	

Note: Depending on many factors, actual data transfer speed mentioned on this page may be lower than theoretical speed.





Audio ports

Option serial

PS/2

2xUSB 2.0

2xUSB 3.0+GbE

2xUSB 3.0+GbE

Slot 1


Slot 2

Slot 3

Slot 4

Slot 5

Slot 6



**Expansion slots**

Slot 1 (CPU2)	PCIe 3.0 x16, full height, full length, 75W
Slot 2 (CPU1)	PCIe 3.0 x16, full height, full length, 75W, double-width
Slot 3 (CPU1)	PCIe 3.0 x8, full height, full length, 25W, open ended
Slot 4 (CPU1)	PCIe 3.0 x16, full height, full length, 75W, double-width
Slot 5	PCI, full height, full length, 25W
Slot 6 (PCH)	PCIe 3.0 x4, full height, half length, 25W, open ended

900W PSU supports two 6+2-pin aux power connectors.  
690W PSU supports one 6+2-pin aux power connector.

*Note: All expansion cards are optional*

# ThinkStation P720 Platform Specifications

Product Specifications Reference (PSREF)

Form factor	36L Tower					
Dimensions	175mm/6.89" W x 485mm/19.1" D x 446mm/17.6" H (with feet)					
Weight	Maximum configuration: 56.7 lb (25.7kg)					
Processor Sockets	2x FCLGA3647					
Processor Support	Up to two 165 W Gen 1 or Gen 2 Intel Xeon Scalable family processors, Bronze, Silver, Gold, or Platinum					
Processor Offering	Processor	# of Cores	# of Threads	Base Frequency	Cache	TDP
	Xeon Gold 6246	12	24	3.3GHz	24.75MB	165W
	Xeon Gold 6244	8	16	3.6GHz	25MB	150W
	Xeon Gold 6242	16	32	2.8GHz	22MB	150W
	Xeon Gold 6238T	22	44	1.9GHz	30MB	125W
	Xeon Gold 6234	8	16	3.3GHz	25MB	130W
	Xeon Gold 6230	20	40	2.1GHz	28MB	125W
	Xeon Gold 6226	12	24	2.7GHz	19MB	125W
	Xeon Gold 5222	4	8	3.8GHz	16.5MB	105W
	Xeon Gold 5218	16	32	2.3GHz	22MB	125W
	Xeon Gold 5217	8	16	3.0GHz	11MB	115W
	Xeon Gold 5215	10	20	2.5GHz	13.75MB	85W
	Xeon Silver 4216	16	32	2.1GHz	22MB	100W
	Xeon Silver 4215	8	16	2.5GHz	11MB	85W
	Xeon Silver 4214	12	24	2.2GHz	17MB	85W
	Xeon Silver 4210	10	20	2.2GHz	14MB	85W
	Xeon Silver 4209T	8	16	2.2GHz	11MB	70W
	Xeon Silver 4208	8	16	2.1GHz	11MB	85W
	Xeon Bronze 3204	6	6	1.9GHz	8.25MB	85W
	Xeon Platinum 8160T	24	48	2.1GHz	33MB	150W
	Xeon Gold 6146	12	24	3.2GHz	24.75MB	165W
	Xeon Gold 6142	16	32	2.6GHz	22MB	150W
	Xeon Gold 6136	12	24	3.0GHz	24.75MB	150W
	Xeon Gold 6134	8	16	3.2GHz	24.75MB	130W
	Xeon Gold 6128	6	12	3.4GHz	19.25MB	115W
	Xeon Gold 5122	4	8	3.6GHz	16.5MB	105W
	Xeon Gold 5120T	14	28	2.2GHz	19.25MB	105W
	Xeon Gold 5118	12	24	2.3GHz	16.5MB	105W
	Xeon Gold 5115	10	20	2.4GHz	13.75MB	85W
	Xeon Silver 4116	12	24	2.1GHz	16.5MB	85W
	Xeon Silver 4114T	10	20	2.2GHz	13.75MB	85W
	Xeon Silver 4114	10	20	2.2GHz	13.75MB	85W
	Xeon Silver 4112	4	8	2.6GHz	8.25MB	85W
	Xeon Silver 4110	8	16	2.1GHz	11MB	85W
	Xeon Silver 4109T	8	16	2.0GHz	11MB	70W
	Xeon Silver 4108	8	16	1.8GHz	11MB	85W
Chipset	Intel C621 Chipset					
Memory Sockets	12 DIMM sockets with 12 channels. 6 DIMM sockets with 6 channels per processor					
Memory Types	DDR4-2666 RDIMM or DDR4-2933 RDIMM					
Memory Capacity	768GB (DDR4-2933 RDIMM) or 384GB (DDR4-2666 RDIMM)					
Memory Protection	ECC					
Expansion slots	Slot 1 (CPU2)	PCIe 3.0 x16, full height, full length, 75W				
	Slot 2 (CPU1)	PCIe 3.0 x16, full height, full length, 75W, double-width				
	Slot 3 (CPU1)	PCIe 3.0 x8, full height, full length, 25W, open ended				
	Slot 4 (CPU1)	PCIe 3.0 x16, full height, full length, 75W, double-width				
	Slot 5	PCI, full height, full length, 25W				
	Slot 6 (PCH)	PCIe 3.0 x4, full height, half length, 25W, open ended				
Discrete Graphics Offering	Graphics	Memory	Pow-er	Connector	SLI / NVlink	Max Qty
	NVS 810	4GB DDR3	68W	8xmini DP		2
	Quadro P400	2GB GDDR5	30W	3xminiDP		3
	Quadro P600	2GB GDDR5	45W	4xminiDP		3
	Quadro P620	2GB GDDR5	40W	4xminiDP		3
	Quadro P1000	4GB GDDR5	50W	4xminiDP		3
	Quadro P2000	5GB GDDR5	75W	4xDP		3
	Quadro P4000	8GB GDDR5	120W	4xDP		2
	Quadro P5000	16GB GDDR5X	180W	DVI-D DL+4xDP	SLI	2
	Quadro P6000	24GB GDDR5X	250W	DVI-D DL+4xDP	SLI	2

Discrete Graphics Offering	Graphics	Memory	Pow-er	Connector	SLI / NVlink	Max Qty	
	Quadro RTX 4000	8GB GDDR6	160W	3xDP, 1xVirtualLink		2	
	Quadro RTX 5000	16GB GDDR6	265W	4xDP, 1xVirtualLink	NVlink	2	
	Quadro RTX 6000	24GB GDDR6	295W	4xDP, 1xVirtualLink	NVlink	2	
	Quadro RTX 8000	48GB GDDR6	295W	4xDP, 1xVirtualLink	NVlink	2	
	Quadro GP100	16GB HBM2	235W	1xDVI-D DL, 4xDP	NVlink	2	
	Quadro GV100	32GB HBM2	250W	4xDP	NVlink	2	
Storage Controller	Storage Controller	Type	Interface	RAID	Cache		
	Onboard Intel RSTe	Std	SATA 6Gb/s	0/1/10/5			
	9440-8i PCIe	Opt	SAS 12Gb/s, SATA 6Gb/s	0/1/10/5			
	9460-16i PCIe	Opt	SAS 12Gb/s, SATA 6Gb/s	0/1/10/5/6	4GB DDR4, SuperCap		
	NVMe Basic	Opt	PCIe NVMe	0/1/10			
	NVMe Premium	Opt	PCIe NVMe	0/1/10/5			
	NVMe for Intel SSD	Opt	PCIe NVMe	0/1/10/5			
Storage Support	Disk Type	Interface	RPM	Offering	Max Qty (Blind connection + 9460 used)		
	3.5" SATA HDD	SATA 6Gb/s	7.2K	1TB/2TB/4TB/6TB	6 (Also supports additional 4x 2.5" SATA SSD/HDD)		
	2.5" SATA HDD	SATA 6Gb/s	7.2K	500GB/500GB FIPS	10		
	2.5" SAS HDD	SAS 12Gb/s	10K	300GB/600GB	8		
	2.5" SATA SSD	SATA 6Gb/s		256GB/512GB/1TB/2TB	10		
	2.5" PCIe SSD	PCIe NVMe		1.5TB	2		
	M.2 PCIe SSD	PCIe NVMe		256GB/512GB/1TB/2TB	9		
	PCIe AIC SSD	PCIe NVMe		480GB	2		
Storage Bays	Bay Type	Maximum Drives Qty					
	M.2 slot	9x M.2 SSD (2 onboard, 7 via PCIe to M.2 adapter)					
	Flex Bay	2 flex bays. Supports the following: <ul style="list-style-type: none"><li>• 2x half-height optical drives</li><li>• 2x 5.25" 9.0mm optical drives</li><li>• 1x 5.25" 9.0mm optical drive + 1x 3.5"/2.5" SATA SSD/HDD</li><li>• 1x 3.5"/2.5" SATA SSD/HDD with Front Access Storage Enclosure</li><li>• 1x flex module for the following options:<ul style="list-style-type: none"><li>Tray 1: 9.0mm optical</li><li>Tray 2: 15-in-1 USB 3.1 Gen 1 reader or 2x Thunderbolt</li></ul></li><li>• Port 1 and 2: Front USB 3.1 Gen 1 Type-C or eSATA</li><li>• 2x M.2 SSD with 2x Front Removable Drive Enclosures</li></ul>					
		Disk bay	4 disk bays (2 bays standard, 2 bays optional). Supports one of the following configurations: <ul style="list-style-type: none"><li>• 4x 3.5" SATA HDD</li><li>• 4x 3.5" SATA HDD + 4x 2.5" SATA SSD/HDD (Blind connection needed)</li><li>• 8x 2.5" SATA SSD/HDD or 8x 2.5" SAS HDD (Blind connection needed)</li><li>• 2x 2.5" PCIe SSD + 2x 3.5"/2.5" disks (Blind connection needed)</li></ul>				
Power supply	Supports one of the following: <ul style="list-style-type: none"><li>• One fixed 690W, autosensing, 92%, 80 PLUS Platinum qualified</li><li>• One fixed 900W, autosensing, 92%, 80 PLUS Platinum qualified</li><li>• One fixed 1000W, autosensing, 92%, 80 PLUS Platinum qualified</li></ul>						

## ThinkStation P720 Platform Specifications

Product Specifications Reference (PSREF)

Media reader	USB 2.0 9-in-1 card reader on most models. Optional UHS-II 15-in-1 USB 3.1 Gen 1 reader on flex module	
Network interfaces	Integrated two-port gigabit ethernet (Intel i219LM and i210AT), supports Wake-on-LAN on both two ports. Optional PCIe ethernet are available	
WLAN + Bluetooth	Optional Intel Wireless-AC 8265, 2x2, 2.4GHz/5GHz, 802.11ac, Bluetooth 4.2, up to 867Mbps	
Security features	Power-on and admin password. Trusted Platform Module, TCG 2.0 compliant, switch to 1.2 via UEFI setting. Chassis intrusion switch. Optional access panel lock, Kensington lock	
Intel vPro	Intel vPro technology supported. vPro requires Wireless-AC 8265 if Wi-Fi is needed	
Intel AMT	Intel Active Management Technology 11	
Diagnostic	Front panel warning LED. ThinkStation Diagnostics for Windows. Photo-audio transfer with Lenovo PC Diagnostics for Android and iOS. Optional front 4-digit diagnostic display on flex module	
Base warranty	1 or 3-year limited onsite service with 9x5/NBD	
HD Audio	Realtek ALC662 codec	
Front ports	4x USB 3.1 Gen 1 (includes one 11W charging), 1x combo audio/microphone jack (3.5mm)	
Rear ports	2x USB 2.0, 4x USB 3.1 Gen 1, 2x RJ-45, 3x analog audio ports (line-in, line-out, mic-in), 2x PS/2	
Optional ports	Supports the following optional ports: Front: <ul style="list-style-type: none"> <li>• 2x Thunderbolt ports (USB Type-C) on flex module, one of two ports supports video-out</li> <li>• 1x eSATA on flex module</li> <li>• 1x USB Type-C on flex module, USB 3.1 Gen 1</li> </ul> Rear: <ul style="list-style-type: none"> <li>• 1x COM port</li> <li>• 2x USB Type-C ports via PCIe adapter, USB 3.1 gen 2. One 15W, one 5W</li> </ul> Internal: <ul style="list-style-type: none"> <li>• 1x internal USB 3.1 Gen 1 port</li> </ul>	
Environmental specification	Temperature - operating	50 °F to 95 °F (10 °C to 35 °C)
	Temperature - storage (no package)	14 °F to 140 °F (-10 °C to 60 °C)
	Temperature - storage (with package)	-40 °F to 140 °F (-40 °C to 60 °C)
	Altitude - operating	(Unpressurized): 0-10000ft (0-3048m)
	Humidity - operating	10%~80%, non-condensing
	Humidity - storage (with package)	10%~90%, non-condensing
Environmental Certifications	RoHS-compliant. GREENGUARD. EPEAT Silver rating. ENERGY STAR 8.0 qualified on selected models	
ISV certifications	Please visit <a href="http://www.thinkworkstations.com/isv-certifications/">www.thinkworkstations.com/isv-certifications/</a>	

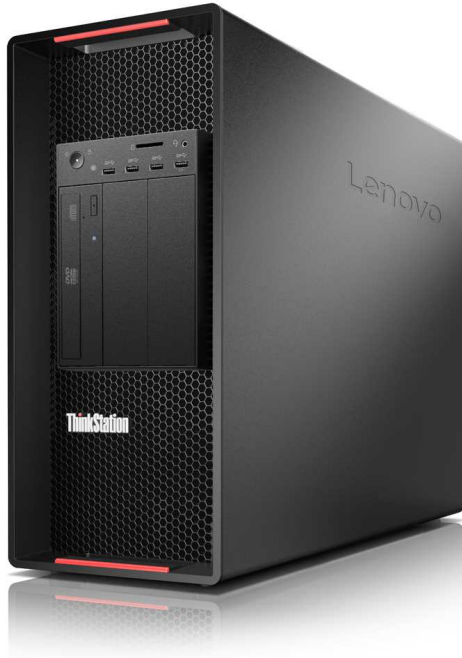
### Note:

1. Depending on many factors, actual data transfer speed mentioned on this page may be lower than theoretical speed.

2. To support the maximum expandability, 900W power supply may be needed.

3. Any questions or advice on ThinkStation PSREF, please contact [ThinkStation PSREF developer](#)







# ThinkStation P920 Platform Specifications

Product Specifications Reference (PSREF)

Form factor	55L Tower						
Dimensions	200mm/7.87" W x 620mm/24.4" D x 446mm/17.56" H (with feet)						
Weight	Maximum configuration: 81.6 lb (31kg)						
Processor Sockets	2x FCLGA3647						
Processor Support	Up to two 205 W Gen 1 or Gen 2 Intel Xeon Scalable family processors, Bronze, Silver, Gold, or Platinum						
Processor Offering	Processor	# of Cores	# of Threads	Base Frequency	Cache	TDP	Memory Types
	Xeon Platinum 8280	28	56	2.7GHz	39MB	205W	DDR4-2933
	Xeon Gold 6254	18	36	3.1GHz	25MB	200W	DDR4-2933
	Xeon Gold 6244	8	16	3.6GHz	25MB	150W	DDR4-2933
	Xeon Gold 6242	16	32	2.8GHz	22MB	150W	DDR4-2933
	Xeon Gold 6238T	22	44	1.9GHz	30MB	125W	DDR4-2933
	Xeon Gold 6234	8	16	3.3GHz	25MB	130W	DDR4-2933
	Xeon Gold 6230	20	40	2.1GHz	28MB	125W	DDR4-2933
	Xeon Gold 6226	12	24	2.7GHz	19MB	125W	DDR4-2933
	Xeon Gold 5222	4	8	3.8GHz	16.5MB	105W	DDR4-2933
	Xeon Gold 5218	16	32	2.3GHz	22MB	125W	DDR4-2666
	Xeon Gold 5217	8	16	3.0GHz	11MB	115W	DDR4-2666
	Xeon Gold 5215	10	20	2.5GHz	13.75MB	85W	DDR4-2666
	Xeon Silver 4216	16	32	2.1GHz	22MB	100W	DDR4-2400
	Xeon Silver 4215	8	16	2.5GHz	11MB	85W	DDR4-2400
	Xeon Silver 4214	12	24	2.2GHz	17MB	85W	DDR4-2400
	Xeon Silver 4210	10	20	2.2GHz	14MB	85W	DDR4-2400
	Xeon Silver 4209T	8	16	2.2GHz	11MB	70W	DDR4-2400
	Xeon Silver 4208	8	16	2.1GHz	11MB	85W	DDR4-2400
	Xeon Bronze 3204	6	6	1.9GHz	8.25MB	85W	DDR4-2133
	Xeon Platinum 8160T	24	48	2.1GHz	33MB	150W	DDR4-2666
	Xeon Gold 6154	18	36	3.0GHz	24.75MB	200W	DDR4-2666
	Xeon Gold 6142	16	32	2.6GHz	22MB	150W	DDR4-2666
	Xeon Gold 6136	12	24	3.0GHz	24.75MB	150W	DDR4-2666
	Xeon Gold 6134	8	16	3.2GHz	24.75MB	130W	DDR4-2666
	Xeon Gold 6128	6	12	3.4GHz	19.25MB	115W	DDR4-2666
	Xeon Gold 5122	4	8	3.6GHz	16.5MB	105W	DDR4-2666
	Xeon Gold 5120T	14	28	2.2GHz	19.25MB	105W	DDR4-2400
	Xeon Gold 5118	12	24	2.3GHz	16.5MB	105W	DDR4-2400
	Xeon Gold 5115	10	20	2.4GHz	13.75MB	85W	DDR4-2400
	Xeon Silver 4116	12	24	2.1GHz	16.5MB	85W	DDR4-2400
	Xeon Silver 4114T	10	20	2.2GHz	13.75MB	85W	DDR4-2400
	Xeon Silver 4114	10	20	2.2GHz	13.75MB	85W	DDR4-2400
	Xeon Silver 4112	4	8	2.6GHz	8.25MB	85W	DDR4-2400
	Xeon Silver 4110	8	16	2.1GHz	11MB	85W	DDR4-2400
	Xeon Silver 4109T	8	16	2.0GHz	11MB	70W	DDR4-2400
	Xeon Silver 4108	8	16	1.8GHz	11MB	85W	DDR4-2400
Chipset	Intel C621 Chipset						
Memory Sockets	16 DIMM sockets with 12 channels. 8 DIMM sockets with 6 channels per processor						
Memory Types	DDR4-2666 RDIMM, DDR4-2666 LRDIMM, or DDR4-2933 RDIMM						
Memory Capacity	1TB (DDR4-2666 LRDIMM or DDR4-2933 RDIMM) or 512GB (DDR4-2666 RDIMM)						
Memory Protection	ECC						
Expansion slots	Slot 1 (CPU1)	PCIe 3.0 x16, full height, full length, 75W, double-width					
	Slot 2 (CPU1)	PCIe 3.0 x4, full height, full length, 25W, open ended					
	Slot 3 (CPU1)	PCIe 3.0 x16, full height, full length, 75W, double-width					
	Slot 4 (CPU1)	PCIe 3.0 x4, full height, full length, 25W, open ended					
	Slot 5 (PCH)	PCIe 3.0 x4, full height, half length, 25W, open ended					
	Slot 6 (CPU2)	PCIe 3.0 x16, full height, half length, 75W					
	Slot 7 (CPU2)	PCIe 3.0 x16, full height, full length, 75W, double-width					
	Slot 8 (CPU2)	PCIe 3.0 x16, full height, full length, 75W					

Discrete Graphics Offering	Graphics	Memory	Power	Connector	SLI / NVLink	Max Qty
	NVS 810	4GB DDR3	68W	8xmini DP		2
	Quadro P400	2GB GDDR5	30W	3xminiDP		5
	Quadro P600	2GB GDDR5	45W	4xminiDP		4
	Quadro P620	2GB GDDR5	40W	4xminiDP		4
	Quadro P1000	4GB GDDR5	50W	4xminiDP		4
	Quadro P2000	5GB GDDR5	75W	4xDP		4
	Quadro P4000	8GB GDDR5	120W	4xDP		4
	Quadro P5000	16GB GDDR5X	180W	DVI-D DL+4xDP	SLI	3
	Quadro P6000	24GB GDDR5X	250W	DVI-D DL+4xDP	SLI	3
	Quadro RTX 4000	8GB GDDR6	160W	3xDP, 1xVirtualLink		3
	Quadro RTX 5000	16GB GDDR6	265W	4xDP, 1xVirtualLink	NVLink	3
	Quadro RTX 6000	24GB GDDR6	295W	4xDP, 1xVirtualLink	NVLink	2
	Quadro RTX 8000	48GB GDDR6	295W	4xDP, 1xVirtualLink	NVLink	2
Storage Controller	Quadro GP100	16GB HBM2	235W	1xDVI-D DL, 4xDP	NVLink	3
	Quadro GV100	32GB HBM2	250W	4xDP	NVLink	3
	Storage Controller	Type	Interface		RAID	Cache
	Onboard Intel RSTe	Std	SATA 6Gb/s		0/1/10/5	
	9440-8i PCIe	Opt	SAS 12Gb/s, SATA 6Gb/s		0/1/10/5	
	9460-16i PCIe	Opt	SAS 12Gb/s, SATA 6Gb/s		0/1/10/5/6	4GB DDR4, SuperCap
	NVMe Basic	Opt	PCIe NVMe		0/1/10	
	NVMe Premium	Opt	PCIe NVMe		0/1/10/5	
Storage Support	NVMe for Intel SSD	Opt	PCIe NVMe		0/1/10/5	
	Disk Type	Interface	RPM	Offering	Max Qty (9460 used)	
	3.5" SATA HDD	SATA 6Gb/s	7.2K	1TB/2TB/4TB/6TB	6 (Also supports additional 4x 2.5" SATA SSD/HDD)	
	2.5" SATA HDD	SATA 6Gb/s	7.2K	500GB/500GB FIPS	10	
	2.5" SAS HDD	SAS 12Gb/s	10K	300GB/600GB	8	
	2.5" SATA SSD	SATA 6Gb/s		256GB/512GB/1TB/2TB	10	
	2.5" PCIe SSD	PCIe NVMe		1.5TB	4	
	M.2 PCIe SSD	PCIe NVMe		256GB/512GB/1TB/2TB	9	
Storage Bays	PCIe AIC SSD	PCIe NVMe		480GB	2	
	Bay Type	Maximum Drives Qty				
	M.2 slot	9x M.2 SSD (2 onboard, 7 via PCIe to M.2 adapter)				
	Flex Bay	2x 3.5" or 2.5" disks. Supports the following:				
		• 3x half-height optical drives				
		• 2x 5.25" 9.0mm optical drives				
		• 1x 5.25" 9.0mm optical drive + 1x 3.5"/2.5" SATA SSD/HDD				
	Disk bay	• 1x 3.5"/2.5" SATA SSD/HDD with Front Access Storage Enclosure				
		1x flex module for the following options:				
		Tray 1: 9.0mm optical				
Tray 2: 15-in-1 USB 3.2 Gen 1 reader or 2x Thunderbolt						
	Port 1 and 2: Front USB 3.2 Gen 1 Type-C or eSATA					
	• 3x M.2 SSD with 3x Front Removable Drive Enclosures					
	8 disk drives with 4 bays (2 bays standard, 2 bays optional). Supports one of the following configurations:					
	• 4x 3.5" SATA HDD					
	• 4x 3.5" SATA HDD + 4x 2.5" SATA SSD/HDD					
	• 8x 2.5" SATA SSD/HDD or 8x 2.5" SAS HDD					

## ThinkStation P920 Platform Specifications

Product Specifications Reference (PSREF)

Max Storage	Supports up to 9x M.2 SSD + 6x 3.5" HDD/10x 2.5" SSD/10x 2.5" HDD + 2x PCIe AIC SSD. All HDD: 36TB using 6x 3.5" HDD All SSD: 38.96TB using 10x 2.5" SATA SSD, 9x M.2 SSD, and 2x PCIe AIC SSD	
Power supply	One fixed 1400 watts, autosensing, 92% PSU, 80 PLUS Platinum qualified. Countries with input voltage under 115V, output power limited to 1125 watts	
Media reader	USB 2.0 9-in-1 card reader on most models. Optional UHS-II 15-in-1 USB 3.2 Gen 1 reader on flex module	
Network interfaces	Integrated two-port gigabit ethernet (Intel i219LM and i210AT), supports Wake-on-LAN on both two ports. Optional PCIe ethernet are available	
WLAN + Bluetooth	Optional Intel Wireless-AC 8265, 2x2, 2.4GHz/5GHz, 802.11ac, Bluetooth 4.2, up to 867Mbps	
Security features	Power-on and admin password. Trusted Platform Module, TCG 2.0 compliant, switch to 1.2 via UEFI setting. Chassis intrusion switch. Optional access panel lock, Kensington lock	
Intel vPro	Intel vPro technology supported. vPro requires Wireless-AC 8265 if Wi-Fi is needed	
Intel AMT	Intel Active Management Technology 11	
Diagnostic	Front 4-digit diagnostic display. ThinkStation Diagnostics for Windows. Photo-audio transfer with Lenovo PC Diagnostics for Android and iOS	
Base warranty	1 or 3-year limited onsite service with 9x5/NBD	
HD Audio	Realtek ALC662 codec	
Front ports	4x USB-A 3.2 Gen 1 (includes one 11W charging), 1x combo audio/microphone jack (3.5mm)	
Rear ports	2x USB-A 2.0, 4x USB-A 3.2 Gen 1, 2x RJ-45, 3x analog audio ports (line-in, line-out, mic-in), 2x PS/2	
Optional ports	Supports the following optional ports: Front: <ul style="list-style-type: none"> <li>• 2x Thunderbolt ports (USB-C form) on flex module, one of two ports supports video-out</li> <li>• 1x eSATA on flex module</li> <li>• 1x USB-C 3.2 Gen 1 on flex module</li> </ul> Rear: <ul style="list-style-type: none"> <li>• 1x COM port</li> <li>• 2x USB-C 3.2 gen 2 ports via PCIe adapter. One 15W, one 5W</li> </ul> Internal: <ul style="list-style-type: none"> <li>• 1x internal USB-A 3.2 Gen 1 port</li> </ul>	
Environmental specification	Temperature - operating	50 °F to 95 °F (10 °C to 35 °C)
	Temperature - storage (no package)	14 °F to 140 °F (-10 °C to 60 °C)
	Temperature - storage (with package)	-40 °F to 140 °F (-40 °C to 60 °C)
	Altitude - operating	(Unpressurized): 0-10000ft (0-3048m)
	Humidity - operating	10%~80%, non-condensing
	Humidity - storage (with package)	10%~90%, non-condensing
Environmental Certifications	RoHS-compliant. GREENGUARD. EPEAT Silver rating. ENERGY STAR 8.0 qualified on selected models	
ISV certifications	Please visit <a href="http://www.thinkworkstations.com/isv-certifications/">www.thinkworkstations.com/isv-certifications/</a>	

**Note:**

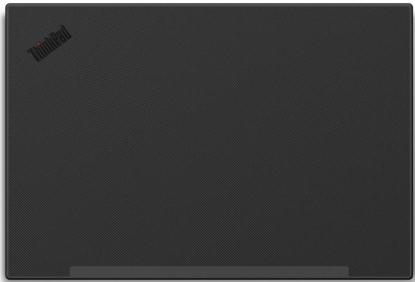
1. Depending on many factors, actual data transfer speed mentioned on this page may be lower than theoretical speed.
2. Any questions or advice on ThinkStation PSREF, please contact [ThinkStation PSREF developer \(houyf@lenovo.com\)](mailto:houyf@lenovo.com)



# ThinkStation P920 Rack Platform Specifications

Product Specifications Reference (PSREF)

Form factor	2U rack							Diagnostic	Light Path Diagnostics	
Dimensions	Height: 87 mm (3.4 in). Width: 445 mm (17.5 in). Depth: 720 mm (28.3 in)							Base warranty	3-year limited onsite service with 9x5/NBD	
Weight	Maximum configuration: 70.54 lb (32 kg)							Warranty upgrades	5WS7A72784Foundation Service - 3Yr Next Business Day Response	
Processor Sockets	2x FCLGA3647								5WS7A72785Foundation Service - 4Yr Next Business Day Response	
Processor Support	Up to two Gen 2 Intel Xeon Scalable family processors, Bronze, Silver, or Gold								5WS7A72786Foundation Service - 5Yr Next Business Day Response	
Processor Offering	Processor	# of Cores	# of Threads	Base Frequency	Cache	TDP	Memory Types		5PS7A72787 Essential Service - 3Yr 24x7 4Hr Response + YourDrive YourData	
	Xeon Gold 6252	24	48	2.1GHz	35.75MB	150W	DDR4-2933		5PS7A72788 Essential Service - 4Yr 24x7 4Hr Response + YourDrive YourData	
	Xeon Gold 6234	8	16	3.3GHz	25MB	130W	DDR4-2933	5PS7A72789 Essential Service - 5Yr 24x7 4Hr Response + YourDrive YourData		
	Xeon Gold 6230	20	40	2.1GHz	28MB	125W	DDR4-2933	HD Audio		
	Xeon Gold 5218	16	32	2.3GHz	22MB	125W	DDR4-2666	None		
	Xeon Gold 5215	10	20	2.5GHz	13.75MB	85W	DDR4-2666	Front ports		
	Xeon Silver 4215	8	16	2.5GHz	11MB	85W	DDR4-2400	One XClarity Controller USB connector, one USB 3.0, one optional VGA		
	Xeon Silver 4214	12	24	2.2GHz	17MB	85W	DDR4-2400	Rear ports		
	Xeon Silver 4210	10	20	2.2GHz	14MB	85W	DDR4-2400	One VGA, two USB 3.0, one XClarity Controller network connector		
Chipset	Intel C624 Platform Controller Hub							Operating system	Microsoft Windows Server 2016 and 2019. Red Hat Enterprise Linux (RHEL) 7 and 8. SUSE Linux Enterprise Server (SLES) 12 and 15. VMware vSphere (ESXi) 6.5 and 6.7.	
	Memory Sockets								24 DIMM sockets with 12 channels. 12 DIMM sockets with 6 channels per processor	
Memory Types	DDR4-2933 RDIMM, 8GB/16GB/32GB available							Environmental specification	Supports ASHRAE A4 with limitations.	
Memory Capacity	768GB with 24x 32GB DDR4-2933 RDIMM								Temperature - operating	
Memory protection	ECC, memory mirroring, and memory sparing								A4: 5°C to 45°C (41°F to 113°F) A3: 5°C to 40°C (41°F to 104°F) A2: 10°C to 35°C (50°F to 95°F)	
Expansion slots	Slot 1 (riser card 1)	Full height, half length, double-wide					Temperature - non operating (no package)			
	Slot 2	Not present, for double-wide card in slot 1					-10°C to 60°C (14°F to 140°F)			
	Slot 3 (riser card 1)	PCIe 3.0 x16 (x8 lanes). Full height, half length					Temperature - non operating (with package)			
	Slot 4 (onboard)	PCIe 3.0 x8, low profile					-40°C to 70°C (-40°F to 158°F)			
	Slot 5 (riser card 2)	PCIe 3.0 x16, full height, half length, requires 2nd CPU					Altitude - operating			
	Slot 6 (riser card 2)	PCIe 3.0 x16, full height, half length, requires 2nd CPU					(Unpressurized): 0-10000ft (0-3048m)			
	Slot 7 (onboard)	PCIe 3.0 x8 (dedicated to an internal storage controller)					Humidity - operating, non-condensing			
Integrated Graphics	Integrated Matrox G200 in XClarity Controller								A4: 8%~90%. A3:8%~85%. A2:8%~80%	
Discrete Graphics Offering	Graphics	Memory		Power	Connector	SLI / NVlink	Max Qty		Humidity - storage (with package), non-condensing	
	Quadro P620	2GB GDDR5		40W	4xminiDP		3		8%~90%	
	Quadro RTX 4000	8GB GDDR6		160W	3xDP, 1xVirtualLink		3		Models should meet the following requirements to support A3 and A4: • NVMe drives not installed • PCIe flash adapter not installed • Graphic processing unit (GPU) not installed • Must have redundant PSU • Processors with TDP more than or equal to 150-watt not installed	
	Quadro RTX 5000	16GB GDDR6		265W	4xDP, 1xVirtualLink		2			
	T4	16GB GDDR6		70W	-		5			
	V100	16GB/32GB HBM2		250W	-		2			
Storage Controller	Storage Controller	Type	Interface	RAID		Cache			Environmental Certifications	Energy Star Server 2.1 certified. More environmental information please see: <a href="http://www.lenovo.com/social_responsibility/us/en/environment/">www.lenovo.com/social_responsibility/us/en/environment/</a>
Storage Support	530-8i	Optional	12Gbps SAS	0/1/10/5/50		-		ISV certifications	Certifications from NVIDIA Quadro ISV Certified	
	Disk Type	Interface	RPM	Offering		Max Qty		Options	4XB7A62801	Intel S4510 3.5" 240G SSD OPT
	3.5" SATA HDD	SATA 6Gb/s	7.2K	1TB/4TB/6TB/8TB/10TB/12TB/14TB		8			4XB7A62802	Intel S4510 3.5" 480G SSD OPT
	3.5" SATA SSD	SATA 6Gb/s	7.2K	240GB/480GB/960GB/1.92TB/3.84TB		8			4XB7A62803	Intel S4510 3.5" 960G SSD OPT
	M.2 SATA SSD	SATA 6Gb/s		480GB		2			4XB7A62804	Intel S4510 3.5" 1.92T SSD OPT
Storage Bays	Bay Type	Maximum Drives Qty					4XB7A62805		Intel S4510 3.5" 3.84T SSD OPT	
	M.2	2x M.2 SATA SSD non-hot swap					4XB7A62806		4TB7.2K 6GSATA 3.5G4HS HDD OPT	
	Disk bay	8x 3.5" SATA/SAS hot-swap disk bays					4XB7A62807		6TB7.2K 6GSATA512e 3.5G4HS OPT	
Power supply	Up to two redundant hot-swap 1100W or 1600W 80 PLUS Platinum qualified AC power supplies. 100V - 240V								4XB7A62808	8TB7.2K 6GSATA512e 3.5G4HS OPT
Media reader	None								4XB7A62809	10T7.2K 6GSATA512e 3.5G4HS OPT
Network interfaces	One dedicated management port. One LOM slot for customized LOM with up to four RJ-45 10GbE ports. Wake-on-LAN and NC-SI are available on Port 0 of LOM								4XB7A62810	3.5" 12TB 7.2K SATA 512e HDD
WLAN + Bluetooth	None								4XB7A62811	14T 3.5" 7.2 SATA HDD OPT
Security features	Power-on and admin password. Trusted Platform Module, TCG 1.2 compliant, upgrade to 2.0 via UEFI setting. Optional lockable security bezel								4ZC7A62797	8GB 1RX8 PC4-2933R 8Gb 1.2V
Systems management	XClarity Controller Standard. Energy Manager. XClarity Administrator. Lenovo Capacity Planner. Provisioning Manager. Essentials							4ZC7A62798	16GB 1RX4 PC4-2933R 8Gb 1.2V	
								4ZC7A62799	16GB 2RX8 PC4-2933R 8Gb 1.2V	
								4ZC7A62800	32GB 2RX4 PC4-2933R 8Gb 1.2V	





# ThinkPad P1 (2nd Gen) Platform Specifications

Product Specifications Reference (PSREF)

Processor	9th Generation Intel® Core™ i5 / i7 / i9 Processor or Intel Xeon® E Processor									Dimensions	WxDxH (non-touch): 14.24" x 9.67" x 0.72"; 361.8mm x 245.7mm x 18.4mm WxDxH (multi-touch): 14.24" x 9.67" x 0.74"; 361.8mm x 245.7mm x 18.7mm						
	Processor Number	# of Cores	# of Threads	Base Frequency	Max Turbo Frequency	Cache	Memory Types	Processor Graphics		Weight	Non-touch model: starting at 3.75 lb / 1.7 kg; Multi-touch model: starting at 4.0 lb / 1.81 kg Black paint (FHD model) or black weave (UHD model)						
	i5-9400H	4	8	2.5 GHz	4.3 GHz	8MB	DDR4-2666	Intel UHD Graphics 630		Case color	Display cover: CFRP/GFRP hybrid; Bottom: Aluminum alloy						
	i7-9750H	6	12	2.6 GHz	4.5 GHz	12MB		Intel UHD Graphics P630	Case material	Smart card reader							
	i7-9850H	6	12	2.6 GHz	4.6 GHz	12MB			Media reader	Optional: Smart card reader							
	i9-9880H	8	16	2.3 GHz	4.8 GHz	16MB			Ports	SD Card reader (SD, SDHC, SDXC), supports UHS-II SD card Two USB 3.1 Gen 1 (one Always On), two USB 3.1 Type-C Gen 2 / Thunderbolt 3 (with the function of Power Delivery and DisplayPort), HDMI 2.0, Ethernet extension connector, headphone / microphone combo jack, optional smart card reader, SD card reader, security keyhole * Power Delivery only supports power-out for charging peripherals * Depending on many factors, actual data transfer speed may be lower than theoretical speed							
E-2276M	6	12	2.8 GHz	4.7 GHz	12MB					Monitor cable (optional)	HDMI to VGA: Lenovo HDMI to VGA Monitor Adapter USB-C to VGA: Lenovo USB-C to VGA Adapter USB-C to DP: Lenovo USB-C to DisplayPort Adapter Optional: ThinkPad Ethernet Extension Cable						
Graphics	Intel UHD Graphics 630 in processor only or Intel UHD Graphics 630 or P630 in processor and NVIDIA® Quadro® T1000 or T2000, 4GB GDDR5 memory; supports external digital monitor via HDMI or Thunderbolt™; Up to 4 displays with 3 external monitors plus system LCD screen. Max resolution: 5K@60Hz (Thunderbolt); 4K@60Hz (HDMI)									Camera (optional)	One of the following, configurable by model: • HD720p camera with ThinkShutter camera privacy, fixed focus • IR camera and HD720p camera with ThinkShutter camera privacy, fixed focus						
Chipset	Mobile Intel CM246 Chipset									Audio support	Keyboard	UltraNav™					
Memory	64GB max / 2666MHz DDR4, ECC or non-ECC (ECC function supported only on Xeon processor), dual-channel capable, two DDR4 SO-DIMM sockets												Security chip	System Mgt (opt)			
Display	Size	Resolution	Type	Surface	Brightness	Aspect Ratio	Contrast Ratio	Color Gamut	Viewing Angle						Fingerprint reader	Color calibration	
	15.6"	FHD (1920x1080)	WVA	Anti-glare	300 nits	16:9	700:1	72% NTSC	170°								NFC
	15.6"	FHD (1920x1080) Dolby Vision™ HDR	WVA	Anti-glare	500 nits	16:9	1200:1	72% NTSC	170°								
	15.6"	UHD (3840x2160) Dolby Vision HDR	WVA	Anti-glare	500 nits	16:9	1200:1	100% Adobe	170°								
15.6"	UHD (3840x2160) Dolby Vision HDR, Multi-touch	OLED	Anti-reflection / Anti-smudge	SDR 400nit, HDR 500nit (peak)	16:9	100000:1	100% DCI-P3	170°									
Multi-touch (opt)	Capacitive-type multi-touch, supports 10-finger gesture (UHD OLED only), AR (anti-reflection) / AS (anti-smudge) coating									Battery	Integrated Li- Polymer 80Wh battery, supports Rapid Charge (charge up to 80% in 1hr)						
Pen (optional)	Lenovo Pen Pro (special bid only)									Max battery life	MobileMark® 2014: 13.8 hr * Battery life varies significantly with hardware configurations, settings, usage, & other factors						
Storage	Up to two M.2 SSD, supports single sided M.2 2280 drives only									AC adapter	135W slim tip AC adapter						
RAID (optional)	M.2 2280 SSD / PCIe NVMe 3.0 x 4																
Optical	RAID 0/1 support									Operating system	One of the following, configurable by model: • Windows® 10 Home 64 • Windows 10 Pro 64 • Windows 10 Pro 64 for Workstations						
Ethernet	None																
WLAN (optional)	Native Intel Ethernet Connection I219-V (Non-vPro) or I219-LM (vPro) via bundled or optional ThinkPad Ethernet Extension Cable									Limited warranty	One of the following, configurable by model: • 1-year depot repair service • 1-year depot with 2-year system board repair service • 3-year/1-yr battery depot repair service • 3-year/1-yr battery limited onsite service						
Bluetooth™ (opt)	Intel Wi-Fi 6 AX200, Wi-Fi 2x2 802.11ax + Bluetooth 5.1																
WWAN	Bluetooth 5.1 wireless, integrated in Wi-Fi + Bluetooth combo adapter									Mil-Spec test	MIL-STD-810G military testing						
SIM card	None																
	None									Environment	EPEAT™ Gold; ENERGY STAR® 8.0; RoHS-compliant						
	None																

Note: The specifications above may not be available in all regions.

Lenovo  
November 2019

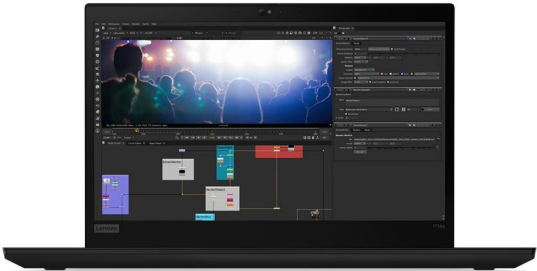
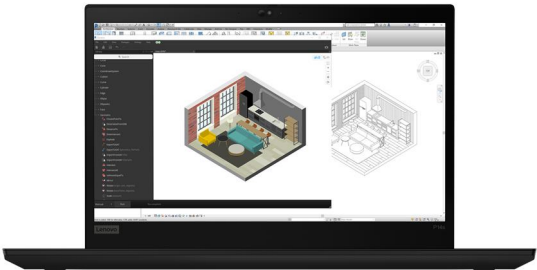


# ThinkPad P1 Gen 3 Platform Specifications

Product Specifications Reference (PSREF)

Processor	Supports one 10th Xeon W, Core i9, i7, or i5 processor as following:									
	Processor Number	# of Cores	# of Threads	Base Frequency	Max Turbo Frequency	Cache	Memory Types	Processor Graphics		
	Xeon W-10855M	6	12	2.8GHz	5.1GHz	12MB	DDR4-2933	Intel UHD Graphics		
	Core i9-10885H	8	16	2.4GHz	5.3GHz	16MB	DDR4-2933	Intel UHD Graphics		
	Core i7-10875H	8	16	2.3GHz	5.1GHz	16MB	DDR4-2933	Intel UHD Graphics		
	Core i7-10850H	6	12	2.7GHz	5.1GHz	12MB	DDR4-2933	Intel UHD Graphics		
	Core i7-10750H	6	12	2.6GHz	5.0GHz	12MB	DDR4-2933	Intel UHD Graphics		
Chipset	Intel WM490 Chipset									
Memory Type	SO-DIMM. DDR4-3200 for non-ECC, DDR4-2933 for ECC. Both ECC and non-ECC memory operate at DDR4-2933. 8GB/16GB/32GB available for both ECC and non-ECC									
Memory Sockets	2 DIMM sockets									
Memory Protection	ECC on models with ECC DIMMs and Xeon processor									
Max Memory	64GB									
Graphics	Intel UHD Graphics in processor, also supports one of the following optional discrete graphics: <ul style="list-style-type: none"><li>• NVIDIA Quadro T1000 with Max-Q Design, 4GB GDDR6 memory</li><li>• NVIDIA Quadro T2000 with Max-Q Design, 4GB GDDR6 memory</li></ul>									
Display	Size	Resolution	Type	Surface	Touch	Brightness	Aspect Ratio	Contrast Ratio	Color Gamut	Viewing Angle
	15.6"	FHD (1920x1080)	WVA	Anti-glare	-	300 nits	16:9	700:1	72% NTSC	170°
	15.6"	FHD (1920x1080) Dolby Vision HDR	WVA	Anti-glare	-	500 nits	16:9	800:1	72% NTSC	170°
	15.6"	UHD (3840x2160) Dolby Vision HDR	WVA	Anti-glare	-	600 nits	16:9	1400:1	100% Adobe	178°
	15.6"	UHD (3840x2160) Dolby Vision, HDR 500 True Black	OLED	Anti-reflection / Anti-smudge	multi-touch	400 nits, 540 nits (peak)	16:9	100000:1	100% DCI-P3	170°
Color Calibration	Factory Color Calibration on UHD panels									
Touchscreen	Touch enable on selected UHD OLED models, supports 10-finger gesture									
Pen	Optional Lenovo Pen Pro									
Storage	Up to two M.2 2280 SSD, PCIe NVMe, 256GB / 512GB / 1TB / 2TB each									
RAID	RAID 0 / 1 support									
Optical	None									
Ethernet	Optional Lenovo USB-C to Ethernet Adapter									
NFC	None									
WLAN + Bluetooth	Intel Wi-Fi 6 AX201 on most models, Wi-Fi 2x2 802.11ax + Bluetooth 5.1. Bluetooth 5.1 requires the latest version of Windows 10 (version 2004 or above)									
WWAN	One of the following, configurable by model: <ul style="list-style-type: none"><li>• No WWAN card and non upgradable</li><li>• Integrated Mobile Broadband 4G LTE-A, Fibocom L860-GL, MIMO 2x2, M.2 card</li></ul>									
SIM card	Optional Nano-SIM card slot									
Dimensions	Width: 361.8 mm (14.24 in). Depth: 245.7 mm (9.67 in). Thickness for non-touch models: 18.4 mm (0.72 in) Thickness for touch models: 18.7 mm (0.74 in)									
Weight	Starting at 1.7 kg (3.75 lb, FHD non-touch) / 1.8 kg (3.97 lb, OLED touch)									
Case color	Woven Carbon Fiber Finish (standard on OLED models, optional on UHD WVA models) or black									
Case material	Display cover: Carbon Fiber (Black or woven pattern) + PC + PPS Hybrid Bottom: Aluminum + PC / ABS									
Media reader	SD card reader									
Standard Ports	2x Thunderbolt (USB-C form, Thunderbolt 3, USB 3.2 Gen 2, PD, DP), 2x USB-A 3.2 Gen 1 (one Always-on), 1x HDMI 2.0, 1x headphone / microphone combo jack, 1x SD card reader, 1x security keyhole									
Optional Ports	One optional Nano-SIM card slot on right									
Monitor support	Up to 4 displays with 3 external monitors plus system LCD screen. External monitors supported via 2x Thunderbolt and 1x HDMI. HDMI supports up to 4K@60Hz. Two Thunderbolt support up to 5K@60Hz each									
Monitor cable	Optional HDMI to VGA, USB-C to DP, or USB-C to VGA adapters									
Bundled Accy	None									
Camera	Supports one optional camera as following: <ul style="list-style-type: none"><li>• HD720p camera with ThinkShutter camera privacy, fixed focus</li><li>• Hybrid IR camera with ThinkShutter camera privacy, fixed focus</li></ul>									
Audio chip	Realtek ALC3286 codec									
Speaker	Stereo speakers, Dolby ATMOS Speaker System									
Microphone	Optional dual far-field microphone									
Keyboard	6-row, spill-resistant, LED backlight, multimedia Fn keys with Unified Communications controls.									
UltraNav	3-button TrackPoint pointing device and 2-button glass surface multi-touch touchpad									
Password	Power-on password, hard disk password, supervisor password									
Security chip	Discrete TPM 2.0, TCG Certified, may be disabled in some regions									
System mgmt	Optional Intel vPro Technology supported on vPro enable models									
Security locks	Security keyhole for optional Kensington lock									
Smart card reader	None									
Fingerprint reader	Touch style match on chip fingerprint reader on the palm rest									
Battery	Integrated Li-Polymer 80Wh battery. Supports Rapid Charge (charge up to 80% in 1hr) with 135W AC adapter									
Max battery life	MobileMark 2014: 15.9 hr. MobileMark 2018: 12 hr <i>* Battery life varies significantly with hardware configurations, settings, usage, &amp; other factors</i>									
Power Adapter	One of the following: <ul style="list-style-type: none"><li>• 135W slim AC adapter</li><li>• 170W slim AC adapter</li></ul>									
Operating system	Supports one optional preloaded operating system as following: <ul style="list-style-type: none"><li>• Windows 10 Home 64</li><li>• Windows 10 Pro 64</li><li>• Windows 10 Pro 64 for Workstations</li><li>• Windows 10 Government Edition 64</li><li>• Ubuntu Linux LTS</li><li>• Fedora Linux</li></ul>									
Base Warranty	Optional warranty plans as following: <ul style="list-style-type: none"><li>• Non-warranty (special bids only)</li><li>• 1-year depot repair service</li><li>• 3-year depot repair service</li><li>• 1-year + 2-year depot repair service</li><li>• 1-year limited onsite service</li><li>• 3-year limited onsite service</li><li>• 1-year + 2-year limited onsite service</li><li>• 1-year depot with 2-year system board repair service</li></ul>									
Mil-Spec test	MIL-STD-810G military testing									
Environment	EPEAT Gold. ENERGY STAR 8.0. RoHS-compliant									
ISV certifications	Please visit <a href="http://www.thinkworkstations.com/isv-certifications/">www.thinkworkstations.com/isv-certifications/</a>									





# ThinkPad P14s Gen 1 (AMD) Platform Specifications

Product Specifications Reference (PSREF)

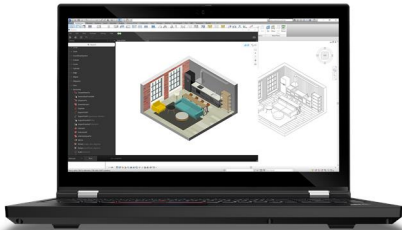
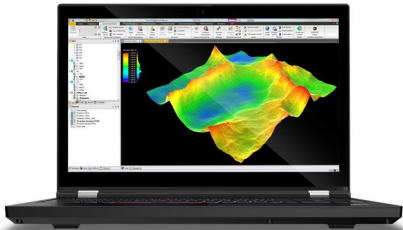
Processor	Processor Number	# of Cores	# of Threads	Base Frequency	Max Turbo Frequency	Cache	Memory Types	Processor Graphics	Media reader	MicroSD card reader
	Ryzen 7 PRO 4750U	8	16	1.7GHz	4.1GHz	4MB L2 / 8MB L3	DDR4-3200	AMD Radeon Graphics	Standard Ports	On left: 2x USB-C (USB 3.2 Gen 2, PD, DP), 1x side docking connector, 1x USB-A 3.2 Gen 1, 1x HDMI 2.0, 1x headphone / microphone combo jack, 1x microSD card reader On right: 1x security keyhole, 1x RJ-45, 1x USB-A 3.2 Gen 1 (Always On)
Chipset	Integrated SoC (System on Chip) platform									Optional Ports
Memory Type	DDR4-3200. 8GB/16GB/32GB DDR4-3200 SO-DIMM non-ECC for DIMM socket, 8GB/16GB DDR4-3200 non-ECC for soldered DIMM.									Monitor support
Memory Sockets	1 DIMM socket plus 1 soldered DIMM, dual-channel capable									Monitor cable
Memory Protection	None									Bundled Accy
Max Memory	48GB with one 32GB SO-DIMM plus one 16GB soldered DIMM									Camera
Graphics	AMD Radeon Graphics in processor, up to 2GB dedicated video memory, allocated from system memory									Audio chip
Display	Size	Resolution	Type	Surface	Touch	Brightness	Aspect Ratio	Contrast Ratio	Color Gamut	Viewing Angle
	14.0"	FHD (1920x1080)	IPS	Anti-glare	-	250 nits	16:9	700:1	45%	170°
	14.0"	FHD (1920x1080)	IPS	Anti-glare	multi-touch	300 nits	16:9	700:1	45%	170°
	14.0"	FHD (1920x1080) Low Power	IPS	Anti-glare	-	400 nits	16:9	800:1	72%	170°
	14.0"	FHD (1920x1080) ThinkPad Privacy Guard	IPS	Anti-glare	multi-touch	500 nits	16:9	1000:1	72%	170°
Color Calibration	None									Security chip
Touchscreen	Optional on-cell touch on selected FHD models, supports 10-finger gesture									System mgmt
Pen	None									Security locks
Storage	Up to one M.2 SSD as following, 1TB max: • M.2 2280 PCIe NVMe, PCIe 3.0 x4, 256GB / 512GB / 1TB • M.2 2242 PCIe NVMe, PCIe 3.0 x2, 128GB, for special bids									Smart card reader
Optical	None									Fingerprint reader
Ethernet	Realtek RTL8111EPV Gigabit Ethernet connection									Battery
NFC	None									Max battery life
WLAN + Bluetooth	Optional Intel Wi-Fi 6 AX200, Wi-Fi 2x2 802.11ax + Bluetooth 5.1. Bluetooth 5.1 requires the latest version of Windows 10 (version 2004 or above)									Power Adapter
WWAN	One of the following, configurable by model: • No WWAN card and non upgradable • Integrated Mobile Broadband Upgradable, No WWAN Card, WWAN Antenna Only • Integrated Mobile Broadband 4G LTE-A, Fibocom L850-GL, M.2 card									Operating system
SIM card	Optional Nano-SIM card slot									Base Warranty
Dimensions	Width: 329 mm (12.95 in). Depth: 227 mm (8.94 in). Thickness: 17.9 mm (0.7 inches)									Mil-Spec test
Weight	Starting at 3.22 lb (1.46kg)									Environment
Case color	Black									ISV certifications
Case material	Display cover: PPS / 50% GF; Bottom: PA / 50% GF									



# ThinkPad P14s Gen 1 (Intel) Platform Specifications

Product Specifications Reference (PSREF)

Processor	Supports one 10th Core i7 and i5 -U suffix processor as following:										Weight	Starting at 3.24 lb (1.47kg)	
	Processor Number	# of Cores	# of Threads	Base Frequency	Max Turbo Frequency	Cache	Memory Types	Processor Graphics			Case color	Black	
	i7-10810U	6	12	1.1GHz	4.9GHz	12MB	DDR4-2666	Intel UHD Graphics			Case material	Display cover: PPS / 50% GF; Bottom: PA / 50% GF	
	i7-10710U	6	12	1.1GHz	4.7GHz	12MB	DDR4-2666	Intel UHD Graphics			Media reader	MicroSD card reader	
	i7-10610U	4	8	1.8GHz	4.9GHz	8MB	DDR4-2666	Intel UHD Graphics			Standard Ports	On left: 1x USB-C (USB 3.2 Gen 1, PD, DP), 1x Thunderbolt (USB-C form, Thunderbolt 3, USB 3.2 Gen 2, PD, DP), 1x side docking connector, 1x USB-A 3.2 Gen 1, 1x HDMI 1.4b, 1x headphone / microphone combo jack, 1x microSD card reader On right: 1x security keyhole, 1x RJ-45, 1x USB-A 3.2 Gen 1 (Always On)	
	i7-10510U	4	8	1.8GHz	4.9GHz	8MB	DDR4-2666	Intel UHD Graphics				Optional Ports	One optional smart card reader on right, one optional Nano-SIM card slot on rear
	i5-10310U	4	8	1.7GHz	4.4GHz	6MB	DDR4-2666	Intel UHD Graphics			Monitor support		Up to 3 displays with 2 external monitors plus system LCD screen. External monitors supported via USB-C, Thunderbolt, and HDMI. 4096x2304 @60Hz on USB-C and Thunderbolt, 4096x2160 @24Hz on HDMI
i5-10210U	4	8	1.6GHz	4.2GHz	6MB	DDR4-2666	Intel UHD Graphics			Monitor cable	Optional HDMI to VGA, USB-C to DP, or USB-C to VGA adapters, up to two		
Chipset	Intel SoC (System on Chip) platform										Bundled Accy	None	
Memory Type	DDR4-3200, operates at DDR4-2666. 8GB/16GB/32GB DDR4-3200 SO-DIMM non-ECC for DIMM socket, 8GB/16GB DDR4-3200 non-ECC for soldered DIMM										Camera	Supports one optional camera as following: • HD720p camera with ThinkShutter camera privacy, fixed focus • IR camera and HD720p camera with ThinkShutter camera privacy, fixed focus	
Memory Sockets	1 DIMM socket plus 1 soldered DIMM, dual-channel capable										Audio chip	Realtek ALC3287 codec	
Memory Protection	None										Speaker	Stereo speakers, 2W x 2, Dolby Audio Speaker System	
Max Memory	48GB with one 32GB SO-DIMM plus one 16GB soldered DIMM										Microphone	Optional dual array near-field microphone	
Graphics	Intel UHD Graphics in processor and NVIDIA Quadro P520, 2GB GDDR5 memory										Keyboard	6-row, spill-resistant, multimedia Fn keys with Unified Communications controls. LED backlight on most models, non LED backlight is for special bids	
Display	Size	Resolution	Type	Surface	Touch	Brightness	Aspect Ratio	Contrast Ratio	Color Gamut	Viewing Angle	UltraNav	TrackPoint pointing device and Mylar surface multi-touch touchpad	
	14.0"	FHD (1920x1080)	WVA	Anti-glare	-	250 nits	16:9	700:1	45%	170°	Password	Power-on password, hard disk password, supervisor password	
	14.0"	FHD (1920x1080)	WVA	Anti-glare	multi-touch	300 nits	16:9	700:1	45%	170°	Security chip	Discrete TPM 2.0, TCG Certified, may be disabled in some regions	
	14.0"	FHD (1920x1080) Low Power	WVA	Anti-glare	-	400 nits	16:9	800:1	72%	170°	System mgmt	Optional Intel vPro Technology supported on vPro enable models	
	14.0"	FHD (1920x1080) ThinkPad Privacy Guard	WVA	Anti-glare	multi-touch	500 nits	16:9	1000:1	72%	170°	Security locks	Security keyhole for optional Kensington lock	
	14.0"	UHD (3840x2160) Dolby Vision, HDR 400	WVA	Glossy	-	500 nits	16:9	1500:1	100% Adobe	170°	Smart card reader	Optional	
	14.0"	UHD (3840x2160) Dolby Vision, HDR 400	WVA	Glossy	-	500 nits	16:9	1500:1	100% Adobe	170°	Fingerprint reader	Optional	
Color Calibration	Factory Color Calibration on UHD panels										Battery	Integrated Li-Polymer 50Wh battery, supports Rapid Charge (charge up to 80% in 1hr) with 65W AC adapter	
Touchscreen	Optional on-cell touch on selected FHD models, supports 10-finger gesture										Max battery life	MobileMark 2014: 15.1 hr. MobileMark 2018: 10.96 hr. <i>* Battery life varies significantly with hardware configurations, settings, usage, &amp; other factors</i>	
Pen	None										Power Adapter	65W or 65W slim USB-C AC adapter	
Storage	Up to one M.2 SSD as following, 2TB max: • M.2 2280 PCIe NVMe, PCIe 3.0 x4, 256GB / 512GB / 1TB / 2TB • M.2 2242 PCIe NVMe, PCIe 3.0 x2, 128GB, for special bids • M.2 2280 512GB SSD + 32 GB Optane, PCIe NVMe 3.0 x 4, for special bids										Operating system	Supports one optional preloaded operating system as following: • Windows 10 Home 64 • Windows 10 Pro 64 • Windows 10 Government Edition 64 for special bids • Ubuntu Linux LTS	
Optical	None										Base Warranty	Optional warranty plans as following: • 1-year depot repair service • 3-year depot repair service • 1-year + 2-year depot repair service • 1-year limited onsite service • 3-year limited onsite service • 1-year + 2-year limited onsite service • 1-year depot with 2-year system board repair service	
Ethernet	One onboard GbE port via integrated gigabit ethernet, Intel i219LM for vPro models or i219V for non-vPro models											Mil-Spec test	MIL-STD-810G military testing
NFC	Optional											Environment	EPEAT Gold. ENERGY STAR 8.0. RoHS-compliant
WLAN + Bluetooth	Optional Intel Wi-Fi 6 AX201 on most models, Wi-Fi 2x2 802.11ax + Bluetooth 5.1. Bluetooth 5.1 requires the latest version of Windows 10 (version 2004 or above)											ISV certifications	Please visit <a href="http://www.thinkworkstations.com/isv-certifications/">www.thinkworkstations.com/isv-certifications/</a>
WWAN	One of the following, configurable by model: • No WWAN card and non upgradable • Integrated Mobile Broadband Upgradable, No WWAN Card, WWAN Antenna Only • Integrated Mobile Broadband 4G LTE-A, Fibocom L850-GL, M.2 card • Integrated Mobile Broadband 4G LTE-A, Fibocom L860-GL, MIMO 4x4, M.2 card												
SIM card	Optional Nano-SIM card slot												
Dimensions	Width: 329 mm (12.95 in). Depth: 227 mm (8.94 in). Thickness: 17.9 mm (0.7 inches)												





# ThinkPad P15 Gen 1 Platform Specifications

Product Specifications Reference (PSREF)

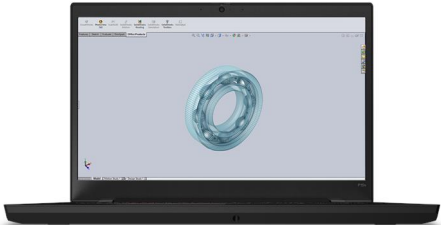
Processor	Supports one 10th Xeon W, Core i9, i7, or i5 processor as following:										SIM card	Optional Nano-SIM card slot	
	Processor Number	# of Cores	# of Threads	Base Frequency	Max Turbo Frequency	Cache	Memory Types	Processor Graphics	Dimensions	Width: 375.4 mm (14.78 in). Depth: 252.3 mm (9.93 in). Thickness for non-touch models: 24.5 ~ 31.45 mm (0.96 ~ 1.24 in) Thickness for touch models: 25.25 ~ 32.2mm (0.99 ~ 1.27 in)			
	Xeon W-10885M	8	16	2.4GHz	5.3GHz	16MB	DDR4-2933	Intel UHD Graphics	Weight	Starting at 2.74 kg (6.05 lb, FHD)			
	Xeon W-10855M	6	12	2.8GHz	5.1GHz	12MB	DDR4-2933	Intel UHD Graphics	Case color	Black			
	Core i9-10980HK	8	16	2.4GHz	5.3GHz	16MB	DDR4-2933	Intel UHD Graphics	Case material	Display cover: GFRP 50% (PPS695 + GF 50%). Bottom: PPS + GF			
	Core i9-10885H	8	16	2.4GHz	5.3GHz	16MB	DDR4-2933	Intel UHD Graphics	Media reader	SD card reader			
	Core i7-10875H	8	16	2.3GHz	5.1GHz	16MB	DDR4-2933	Intel UHD Graphics	Standard Ports	1x USB-C (USB 3.2 Gen 1, PD, DP), 2x Thunderbolt (USB-C form, Thunderbolt 3, USB 3.2 Gen 2, PD, DP), 2x USB-A 3.2 Gen 1 (one Always-on), 1x HDMI 2.0, 1x headphone / microphone combo jack, 1x SD card reader, 1x security keyhole, 1x RJ-45			
	Core i7-10850H	6	12	2.7GHz	5.1GHz	12MB	DDR4-2933	Intel UHD Graphics	Optional Ports	One optional smart card reader on right, one optional Nano-SIM card slot on left			
	Core i7-10750H	6	12	2.6GHz	5.0GHz	12MB	DDR4-2933	Intel UHD Graphics	Monitor support	Up to 5 displays with 4 external monitors plus system LCD screen. External monitors supported via 1x USB-C, 2x Thunderbolt, and 1x HDMI. USB-C and HDMI support up to 4K@60Hz. With Thunderbolt, one supports up to 5K@60Hz and one supports up to 4K@60Hz			
	Core i5-10400H	4	8	2.6GHz	4.6GHz	8MB	DDR4-2933	Intel UHD Graphics	Monitor cable	Optional HDMI to VGA, USB-C to DP, or USB-C to VGA adapters			
Chipset	Intel WM490 Chipset										Bundled Accy	None	
Memory Type	SO-DIMM, DDR4-3200 for non-ECC, DDR4-2933 for ECC. Operates at DDR4-2933. 8GB/16GB/32GB available for both ECC and non-ECC										Camera	Supports one optional camera as following: <ul style="list-style-type: none"><li>• HD720p camera with ThinkShutter camera privacy, fixed focus</li><li>• Hybrid IR camera with ThinkShutter camera privacy, fixed focus</li></ul>	
Memory Sockets	4 DIMM sockets										Audio chip	Realtek ALC3286 codec	
Memory Protection	ECC on models with ECC DIMMs and Xeon processor										Speaker	Stereo speakers, Dolby Atmos sound system	
Max Memory	128GB										Microphone	Optional dual array far-field microphone	
Graphics	Support one of the following discrete graphics: <ul style="list-style-type: none"><li>• NVIDIA Quadro T1000, 4GB GDDR6 memory</li><li>• NVIDIA Quadro T2000, 4GB GDDR6 memory</li><li>• NVIDIA Quadro RTX 3000, 6GB GDDR6 memory</li><li>• NVIDIA Quadro RTX 4000 with Max-Q Design, 8GB GDDR6 memory</li><li>• NVIDIA Quadro RTX 5000 with Max-Q Design, 16GB GDDR6 memory</li></ul>										Keyboard	6-row, spill-resistant, LED backlight, numeric keypad, multimedia Fn keys with Unified Communications controls.	
											UltraNav	3-button TrackPoint pointing device and 2-button Mylar surface multi-touch touchpad	
Display	Size	Resolution	Type	Surface	Touch	Brightness	Aspect Ratio	Contrast Ratio	Color Gamut	Viewing Angle	Password	Power-on password, hard disk password, supervisor password	
	15.6"	FHD (1920x1080)	WVA	Anti-glare	-	300 nits	16:9	700:1	72% NTSC	160°	Security chip	Discrete TPM 2.0, TCG Certified, may be disabled in some regions	
	15.6"	FHD (1920x1080) Dolby Vision, HDR 400	WVA	Anti-glare	-	500 nits	16:9	1200:1	72% NTSC	160°	System mgmt	Optional Intel vPro Technology supported on vPro enable models	
	15.6"	UHD (3840x2160) Dolby Vision, HDR 400	WVA	Anti-glare	-	600 nits	16:9	1400:1	100% Adobe	178°	Security locks	Security keyhole for optional Kensington lock	
	15.6"	UHD (3840x2160) Dolby Vision, HDR 400	OLED	Anti-reflection / Anti-smudge	multi-touch	SDR 400nit, HDR 500nit (peak)	16:9	100000:1	100% DCI-P3	170°	Smart card reader	Optional	
											Fingerprint reader	Touch style match on chip fingerprint reader on the palm rest	
Color Calibration	Factory Color Calibration on UHD panels										Battery	Integrated Li-Polymer 94Wh battery. Supports Rapid Charge (charge up to 80% in 1hr) with 230W AC adapter	
Touchscreen	Touch enable on selected UHD OLED models, supports 10-finger gesture										Max battery life	MobileMark 2014: 16.4 hr. MobileMark 2018: 10.3 hr <i>* Battery life varies significantly with hardware configurations, settings, usage, &amp; other factors</i>	
Pen	Optional Lenovo Pen Pro										Power Adapter	One of the following: <ul style="list-style-type: none"><li>• 230W slim AC adapter</li><li>• 170W slim AC adapter</li></ul>	
Storage	Up to two M.2 2280 SSD, PCIe NVMe, 256GB / 512GB / 1TB / 2TB each										Operating system	Supports one optional preloaded operating system as following: <ul style="list-style-type: none"><li>• Windows 10 Home 64</li><li>• Windows 10 Pro 64</li><li>• Windows 10 Pro 64 for Workstations</li><li>• Ubuntu Linux LTS</li><li>• Fedora Linux</li></ul>	
RAID	RAID 0 / 1 support											Base Warranty	Optional warranty plans as following: <ul style="list-style-type: none"><li>• 1-year depot repair service</li><li>• 3-year depot repair service</li><li>• 1-year + 2-year depot repair service</li><li>• 1-year limited onsite service</li><li>• 3-year limited onsite service</li><li>• 1-year + 2-year limited onsite service</li><li>• 1-year depot with 2-year system board repair service</li></ul>
Optical	None										Mil-Spec test		MIL-STD-810G military testing
Ethernet	One onboard GbE port via integrated gigabit ethernet, Intel i219LM for vPro models or i219V for non-vPro models										Environment		EPEAT Gold. ENERGY STAR 8.0. RoHS-compliant
NFC	None										ISV certifications		Please visit <a href="http://www.thinkworkstations.com/isv-certifications/">www.thinkworkstations.com/isv-certifications/</a>
WLAN + Bluetooth	Optional Intel Wi-Fi 6 AX201 on most models, Wi-Fi 2x2 802.11ax + Bluetooth 5.1. Bluetooth 5.1 requires the latest version of Windows 10 (version 2004 or above)												
WWAN	One of the following, configurable by model: <ul style="list-style-type: none"><li>• No WWAN card and non upgradable</li><li>• Integrated Mobile Broadband Upgradable, No WWAN Card, WWAN Antenna Only</li><li>• Integrated Mobile Broadband 4G LTE-A, Fibocom L860-GL, MIMO 4x4, M.2 card</li></ul>												
	Note: WWAN cannot be supported on UHD WVA models												



# ThinkPad P15s Gen 1 Platform Specifications

Product Specifications Reference (PSREF)

Processor	Supports one 10th Core i7 and i5 -U suffix processor as following:										Case material	Display cover: PPS / 50% GF; Bottom: PA / 50% GF	
	Processor Number	# of Cores	# of Threads	Base Frequency	Max Turbo Frequency	Cache	Memory Types	Processor Graphics		Media reader	MicroSD card reader		
	i7-10810U	6	12	1.1GHz	4.9GHz	12MB	DDR4-2666	Intel UHD Graphics		Standard Ports	On left: 1x USB-C (USB 3.2 Gen 1, PD, DP), 1x Thunderbolt (USB-C form, Thunderbolt 3, USB 3.2 Gen 2, PD, DP), 1x side docking connector, 1x USB-A 3.2 Gen 1, 1x HDMI 1.4b, 1x headphone / microphone combo jack, 1x microSD card reader On right: 1x security keyhole, 1x RJ-45, 1x USB-A 3.2 Gen 1 (Always On)		
	i7-10710U	6	12	1.1GHz	4.7GHz	12MB	DDR4-2666	Intel UHD Graphics					
	i7-10610U	4	8	1.8GHz	4.9GHz	8MB	DDR4-2666	Intel UHD Graphics					
	i7-10510U	4	8	1.8GHz	4.9GHz	8MB	DDR4-2666	Intel UHD Graphics		Optional Ports	One optional smart card reader on right, one optional nano-SIM card slot on rear		
	i5-10310U	4	8	1.7GHz	4.4GHz	6MB	DDR4-2666	Intel UHD Graphics		Monitor support	Up to 3 displays with 2 external monitors plus system LCD screen. Two external monitors supported via USB-C, Thunderbolt, and HDMI. 4096x2304@60Hz on USB-C and Thunderbolt, 4096x2160 @24Hz on HDMI		
i5-10210U	4	8	1.6GHz	4.2GHz	6MB	DDR4-2666	Intel UHD Graphics		Monitor cable	Optional HDMI to VGA, USB-C to DP, or USB-C to VGA adapters, up to two			
Chipset	Intel SoC (System on Chip) platform										Bundled Accy	None	
Memory Type	DDR4-3200, operates at DDR4-2666. 8GB/16GB/32GB DDR4-3200 SO-DIMM non-ECC for DIMM sockets, 8GB/16GB DDR4-3200 non-ECC for soldered DIMM										Camera	Supports one optional camera as following: • HD720p camera with ThinkShutter camera privacy, fixed focus • IR camera and HD720p camera with ThinkShutter camera privacy, fixed focus	
Memory Sockets	1 DIMM socket plus 1 soldered DIMM, dual-channel capable										Audio chip	Realtek ALC3287 codec	
Memory Protection	None										Speaker	Stereo speakers, 2W x 2, Dolby Audio Speaker System	
Max Memory	48GB with one 32GB SO-DIMM plus one 16GB soldered DIMM										Microphone	Optional dual array near-field microphone	
Graphics	Intel UHD Graphics in processor and NVIDIA Quadro P520, 2GB GDDR5 memory										Keyboard	6-row, spill-resistant, multimedia Fn keys with Unified Communications controls, numeric keypad. LED backlight on most models, non LED backlight is for special bids	
Display	Size	Resolution		Type	Surface	Touch	Brightness	Aspect Ratio	Contrast Ratio	Color Gamut	Viewing Angle	UltraNav	TrackPoint pointing device and Mylar surface multi-touch touchpad
	15.6"	FHD (1920x1080)		WVA	Anti-glare	-	250 nits	16:9	800:1	45%	170°	Password	Power-on password, hard disk password, supervisor password
	15.6"	FHD (1920x1080)		WVA	Anti-glare	multi-touch	300 nits	16:9	800:1	45%	170°	Security chip	Discrete TPM 2.0, TCG Certified, may be disabled in some regions
	15.6"	UHD (3840x2160) Dolby Vision, HDR 400		WVA	Anti-glare	-	600 nits	16:9	1400:1	100% Adobe	170°	System mgmt	Optional Intel vPro Technology supported on vPro enable models
Color Calibration	Factory Color Calibration on UHD models										Security locks	Security keyhole for optional Kensington lock	
Touchscreen	Optional on-cell touch on selected FHD models, supports 10-finger gesture										Smart card reader	Optional	
Pen	None										Fingerprint reader	Optional	
Storage	Up to one M.2 SSD as following, 2TB max: • M.2 2280 PCIe NVMe, PCIe 3.0 x 4, 256GB / 512GB / 1TB / 2TB • M.2 2242 PCIe NVMe, PCIe 3.0 x 2, 128GB, for special bids • M.2 2280 512GB SSD + 32 GB Optane, PCIe NVMe 3.0 x 4, for special bids										Battery	Integrated Li-Polymer 57Wh battery, supports Rapid Charge (charge up to 80% in 1hr) with 65W AC adapter	
Optical	None										Max battery life	MobileMark 2014: 16.5 hr. MobileMark 2018: 10.48 hr. <i>* Battery life varies significantly with hardware configurations, settings, usage, &amp; other factors</i>	
Ethernet	One onboard GbE port via integrated gigabit ethernet, Intel i219LM for vPro models or i219V for non-vPro models										Power Adapter	65W or 65W slim USB-C AC adapter	
NFC	Optional										Operating system	Supports one optional preloaded operating system as following: • Windows 10 Home 64 • Windows 10 Pro 64 • Windows 10 Government Edition 64 for special bids • Ubuntu Linux LTS	
WLAN + Bluetooth	Optional Intel Wi-Fi 6 AX201 on most models, Wi-Fi 2x2 802.11ax + Bluetooth 5.1. Bluetooth 5.1 requires the latest version of Windows 10 (version 2004 or above)											Base Warranty	Optional warranty plans as following: • 1-year depot repair service • 3-year depot repair service • 1-year + 2-year depot repair service • 1-year limited onsite service • 3-year limited onsite service • 1-year + 2-year limited onsite service • 1-year depot with 2-year system board repair service
WWAN	One of the following, configurable by model: • No WWAN card and non upgradable • Integrated Mobile Broadband Upgradable, No WWAN Card, WWAN Antenna Only • Integrated Mobile Broadband 4G LTE-A, Fibocom L850-GL, M.2 card • Integrated Mobile Broadband 4G LTE-A, Fibocom L860-GL, MIMO 4x4, M.2 card										Mil-Spec test		MIL-STD-810G military testing
SIM card	Optional Nano-SIM card slot										Environment		EPEAT Gold. ENERGY STAR 8.0. RoHS-compliant
Dimensions	Width: 365.8 mm (14.4 in). Depth: 248 mm (9.76 in). Thickness: 19.1 mm (0.75 inches)										ISV certifications	Please visit <a href="http://www.thinkworkstations.com/isv-certifications/">www.thinkworkstations.com/isv-certifications/</a>	
Weight	Starting at 3.86 lb (1.75kg)												
Case color	Black												



# ThinkPad P15v Gen 1 Platform Specifications

Product Specifications Reference (PSREF)

Processor	Supports one 10th Xeon W, Core i7, or i5 processor as following:									
	Processor Number	# of Cores	# of Threads	Base Frequency	Max Turbo Frequency	Cache	Memory Types	Processor Graphics		
	Xeon W-10855M	6	12	2.8GHz	5.1GHz	12MB	DDR4-2933	Intel UHD Graphics		
	Core i7-10875H	8	16	2.3GHz	5.1GHz	16MB	DDR4-2933	Intel UHD Graphics		
	Core i7-10850H	6	12	2.7GHz	5.1GHz	12MB	DDR4-2933	Intel UHD Graphics		
	Core i7-10750H	6	12	2.6GHz	5.0GHz	12MB	DDR4-2933	Intel UHD Graphics		
	Core i5-10300H	4	8	2.5GHz	4.5GHz	8MB	DDR4-2933	Intel UHD Graphics		
Chipset	Intel WM490 Chipset									
Memory Type	SO-DIMM, DDR4-3200 non-ECC or DDR4-2933 ECC. Operates at DDR4-2933. 8GB/16GB/32GB available for both ECC and non-ECC									
Memory Sockets	2 DIMM sockets									
Memory Protection	ECC on models with ECC DIMMs and Xeon processor									
Max Memory	64GB									
Graphics	Intel UHD Graphics in processor, also supports optional NVIDIA Quadro P620, 4GB GDDR5 memory									
Display	Size	Resolution	Type	Surface	Touch	Brightness	Aspect Ratio	Contrast Ratio	Color Gamut	Viewing Angle
	15.6"	FHD (1920x1080)	WVA	Anti-glare	-	250 nits	16:9	700:1	45% NTSC	170°
	15.6"	FHD (1920x1080)	WVA	Anti-glare	multi-touch	300 nits	16:9	800:1	45% NTSC	170°
	15.6"	UHD (3840x2160) Dolby Vision, HDR 400	WVA	Anti-glare	-	600 nits	16:9	1400:1	100% Adobe	178°
Color Calibration	Factory Color Calibration on UHD panels									
Touchscreen	Touch enable on selected FHD models, supports 10-finger gesture									
Pen	None									
Storage	Up to two M.2 2280 SSD, PCIe NVMe, 256GB / 512GB / 1TB / 2TB each									
RAID	RAID 0 / 1 support									
Optical	None									
Ethernet	One onboard GbE port via integrated gigabit ethernet, Intel i219LM for vPro models or i219V for non-vPro models									
NFC	None									
WLAN + Bluetooth	Optional Intel Wi-Fi 6 AX201 on most models, Wi-Fi 2x2 802.11ax + Bluetooth 5.1. Bluetooth 5.1 requires the latest version of Windows 10 (version 2004 or above)									
WWAN	One of the following, configurable by model: • No WWAN card and non upgradable • Integrated Mobile Broadband Upgradable, No WWAN Card, WWAN Antenna Only • Integrated Mobile Broadband 4G LTE-A, Fibocom L850-GL, MIMO 2x2, M.2 card									
SIM card	Optional Nano-SIM card slot									
Dimensions	Width: 366.5 mm (14.43 in). Depth: 250 mm (9.84 in). Thickness: 24.2 mm (0.95 in)									
Weight	Starting at 2.07 kg (4.57 lb, UHD)									
Case color	Black									
Case material	Display cover: PC / ABS Bottom: PC / ABS									
Media reader	SD card reader									
Standard Ports	1x Thunderbolt (USB-C form, Thunderbolt 3, USB 3.2 Gen 2, PD, DP), 2x USB-A 3.2 Gen 1 (one Always-on), 1x HDMI 2.0, 1x headphone / microphone combo jack, 1x SD card reader, 1x security keyhole, 1x RJ-45									
Optional Ports	One optional smart card reader on left, one optional Nano-SIM card slot on rear									
Monitor support	Up to 3 displays with 2 external monitors plus system LCD screen. External monitors supported via Thunderbolt and HDMI. HDMI supports up to 4K@60Hz. Thunderbolt supports up to 5K@60Hz									
Monitor cable	Optional HDMI to VGA, USB-C to DP, or USB-C to VGA adapters									
Bundled Accy	None									
Camera	Supports one optional camera as following: • HD720p camera with ThinkShutter camera privacy, fixed focus • Hybrid IR camera with ThinkShutter camera privacy, fixed focus									
Audio chip	Realtek ALC3287 codec									
Speaker	Stereo speakers with Dolby Audio support									
Microphone	Optional dual array near-field microphone									
Keyboard	6-row, spill-resistant, numeric keypad, multimedia Fn keys with Unified Communications controls, optional LED backlight									
UltraNav	3-button TrackPoint pointing device and 2-button Mylar surface multi-touch touchpad									
Password	Power-on password, hard disk password, supervisor password									
Security chip	Discrete TPM 2.0, TCG Certified, may be disabled in some regions									
System mgmt	Optional Intel vPro Technology supported on vPro enable models									
Security locks	Security keyhole for optional Kensington lock									
Smart card reader	Optional									
Fingerprint reader	Touch style match on chip fingerprint reader on the palm rest									
Battery	Integrated Li-Polymer 68Wh battery. Supports Rapid Charge (charge up to 80% in 1hr) with 135W AC adapter									
Max battery life	MobileMark 2014: 10 hr. MobileMark 2018: 7.2 hr <i>* Battery life varies significantly with hardware configurations, settings, usage, &amp; other factors</i>									
Power Adapter	135W slim AC adapter									
Operating system	Supports one optional preloaded operating system as following: • Windows 10 Home 64 • Windows 10 Pro 64 • Windows 10 Pro 64 for Workstations • Ubuntu Linux LTS									
Base Warranty	Optional warranty plans as following: • 1-year depot repair service • 3-year depot repair service • 1-year + 2-year depot repair service • 1-year limited onsite service • 3-year limited onsite service • 1-year + 2-year limited onsite service • 1-year depot with 2-year system board repair service									
Mil-Spec test	MIL-STD-810G military testing									
Environment	EPEAT Gold. ENERGY STAR 8.0. RoHS-compliant									
ISV certifications	Please visit <a href="http://www.thinkworkstations.com/isv-certifications/">www.thinkworkstations.com/isv-certifications/</a>									



# ThinkPad P15v Gen 1 Platform Specifications

Product Specifications Reference (PSREF)

Processor	Supports one 10th Xeon W, Core i7, or i5 processor as following:									
	Processor Number	# of Cores	# of Threads	Base Frequency	Max Turbo Frequency	Cache	Memory Types	Processor Graphics		
	Xeon W-10855M	6	12	2.8GHz	5.1GHz	12MB	DDR4-2933	Intel UHD Graphics		
	Core i7-10875H	8	16	2.3GHz	5.1GHz	16MB	DDR4-2933	Intel UHD Graphics		
	Core i7-10850H	6	12	2.7GHz	5.1GHz	12MB	DDR4-2933	Intel UHD Graphics		
	Core i7-10750H	6	12	2.6GHz	5.0GHz	12MB	DDR4-2933	Intel UHD Graphics		
	Core i5-10300H	4	8	2.5GHz	4.5GHz	8MB	DDR4-2933	Intel UHD Graphics		
Chipset	Intel WM490 Chipset									
Memory Type	SO-DIMM, DDR4-3200 non-ECC or DDR4-2933 ECC. Operates at DDR4-2933. 8GB/16GB/32GB available for both ECC and non-ECC									
Memory Sockets	2 DIMM sockets									
Memory Protection	ECC on models with ECC DIMMs and Xeon processor									
Max Memory	64GB									
Graphics	Intel UHD Graphics in processor plus optional NVIDIA Quadro P620, 4GB GDDR5 memory									
Display	Size	Resolution	Type	Surface	Touch	Brightness	Aspect Ratio	Contrast Ratio	Color Gamut	Viewing Angle
	15.6"	FHD (1920x1080)	WVA	Anti-glare	-	250 nits	16:9	700:1	45% NTSC	170°
	15.6"	FHD (1920x1080)	WVA	Anti-glare	multi-touch	300 nits	16:9	800:1	45% NTSC	170°
	15.6"	UHD (3840x2160) Dolby Vision, HDR 400	WVA	Anti-glare	-	600 nits	16:9	1400:1	100% Adobe	178°
Color Calibration	Factory Color Calibration on UHD panels									
Touchscreen	Touch enable on selected FHD models, supports 10-finger gesture									
Pen	None									
Storage	Up to two M.2 2280 SSD, PCIe NVMe, 256GB / 512GB / 1TB / 2TB each									
RAID	RAID 0 / 1 support									
Optical	None									
Ethernet	One onboard GbE port via integrated gigabit ethernet, Intel i219LM for vPro models or i219V for non-vPro models									
NFC	None									
WLAN + Bluetooth	Optional Intel Wi-Fi 6 AX201 on most models, Wi-Fi 2x2 802.11ax + Bluetooth 5.1. Bluetooth 5.1 requires the latest version of Windows 10 (version 2004 or above)									
WWAN	One of the following, configurable by model: • No WWAN card and non upgradable • Integrated Mobile Broadband 4G LTE-A, Fibocom L850-GL, MIMO 2x2, M.2 card									
SIM card	Optional Nano-SIM card slot									
Dimensions	Width: 366.5 mm (14.43 in). Depth: 250 mm (9.84 in). Thickness: 24.2 mm (0.95 in)									
Weight	Starting at 2.07 kg (4.57 lb, UHD)									
Case color	Black									
Case material	Display cover: PC / ABS Bottom: PC / ABS									
Media reader	SD card reader									
Standard Ports	1x Thunderbolt (USB-C form, Thunderbolt 3, USB 3.2 Gen 2, PD, DP), 2x USB-A 3.2 Gen 1 (one Always-on), 1x HDMI 2.0, 1x headphone / microphone combo jack, 1x SD card reader, 1x security keyhole, 1x RJ-45									
Optional Ports	One optional smart card reader on left, one optional Nano-SIM card slot on rear									
Monitor support	Up to 3 displays with 2 external monitors plus system LCD screen. External monitors supported via Thunderbolt and HDMI. HDMI supports up to 4K@60Hz. Thunderbolt supports up to 5K@60Hz									
Monitor cable	Optional HDMI to VGA, USB-C to DP, or USB-C to VGA adapters									
Bundled Accy	None									
Camera	Supports one optional camera as following: • HD720p camera with ThinkShutter camera privacy, fixed focus • Hybrid IR camera with ThinkShutter camera privacy, fixed focus									
Audio chip	Realtek ALC3287 codec									
Speaker	Stereo speakers with Dolby Audio support									
Microphone	Optional dual array near-field microphone									
Keyboard	6-row, spill-resistant, numeric keypad, multimedia Fn keys with Unified Communications controls, optional LED backlight									
UltraNav	3-button TrackPoint pointing device and 2-button Mylar surface multi-touch touchpad									
Password	Power-on password, hard disk password, supervisor password									
Security chip	Discrete TPM 2.0, TCG Certified, may be disabled in some regions									
System mgmt	Optional Intel vPro Technology supported on vPro enable models									
Security locks	Security keyhole for optional Kensington lock									
Smart card reader	Optional									
Fingerprint reader	Touch style match on chip fingerprint reader on the palm rest									
Battery	Integrated Li-Polymer 68Wh battery. Supports Rapid Charge (charge up to 80% in 1hr) with 135W AC adapter									
Max battery life	MobileMark 2014: 10 hr. MobileMark 2018: 7.2 hr <i>* Battery life varies significantly with hardware configurations, settings, usage, &amp; other factors</i>									
Power Adapter	135W slim AC adapter									
Operating system	Supports one optional preloaded operating system as following: • Windows 10 Home 64 • Windows 10 Pro 64 • Windows 10 Pro 64 for Workstations • Ubuntu Linux LTS									
Base Warranty	Optional warranty plans as following: • 1-year depot repair service • 3-year depot repair service • 1-year + 2-year depot repair service • 1-year limited onsite service • 3-year limited onsite service • 1-year + 2-year limited onsite service • 1-year depot with 2-year system board repair service									
Mil-Spec test	MIL-STD-810G military testing									
Environment	EPEAT Gold. ENERGY STAR 8.0. RoHS-compliant									
ISV certifications	Please visit <a href="http://www.thinkworkstations.com/isv-certifications/">www.thinkworkstations.com/isv-certifications/</a>									



# ThinkPad P17 Gen 1 Platform Specifications

Product Specifications Reference (PSREF)

Processor	Supports one 10th Xeon W, Core i9, i7, or i5 processor as following:										Dimensions	Width: 415.44 mm (16.36 in). Depth: 280.81 mm (11.06 in). Thickness: 25.11~ 33.25 mm (0.99 ~ 1.31 in)	
	Processor Number	# of Cores	# of Threads	Base Frequency	Max Turbo Frequency	Cache	Memory Types	Processor Graphics	Weight	Starting at 3.5 kg (7.7 lb, FHD)			
	Xeon W-10885M	8	16	2.4GHz	5.3GHz	16MB	DDR4-2933	Intel UHD Graphics	Case color	Black			
	Xeon W-10855M	6	12	2.8GHz	5.1GHz	12MB	DDR4-2933	Intel UHD Graphics	Case material	Display cover: GFRP 50% (PPS695 + GF 50%). Bottom: PPS + GF			
	Core i9-10980HK	8	16	2.4GHz	5.3GHz	16MB	DDR4-2933	Intel UHD Graphics	Media reader	SD card reader			
	Core i9-10885H	8	16	2.4GHz	5.3GHz	16MB	DDR4-2933	Intel UHD Graphics	Standard Ports	1x USB-C (USB 3.2 Gen 1, PD, DP), 2x Thunderbolt (USB-C form, Thunderbolt 3, USB 3.2 Gen 2, PD, DP), 3x USB-A 3.2 Gen 1 (one Always-on), 1x HDMI 2.0, 1x headphone / microphone combo jack, 1x SD card reader, 1x security keyhole, 1x RJ-45			
	Core i7-10875H	8	16	2.3GHz	5.1GHz	16MB	DDR4-2933	Intel UHD Graphics	Optional Ports	One optional smart card reader on right, one optional Nano-SIM card slot on left			
	Core i7-10850H	6	12	2.7GHz	5.1GHz	12MB	DDR4-2933	Intel UHD Graphics	Monitor support	Up to 5 displays with 4 external monitors plus system LCD screen. External monitors supported via 1x USB-C, 2x Thunderbolt, and 1x HDMI. USB-C and HDMI support up to 4K@60Hz. With Thunderbolt, one supports up to 5K@60Hz and one supports up to 4K@60Hz			
	Core i7-10750H	6	12	2.6GHz	5.0GHz	12MB	DDR4-2933	Intel UHD Graphics	Monitor cable	Optional HDMI to VGA, USB-C to DP, or USB-C to VGA adapters			
	Core i5-10400H	4	8	2.6GHz	4.6GHz	8MB	DDR4-2933	Intel UHD Graphics	Bundled Accy	None			
Chipset	Intel WM490 Chipset										Camera	Optional Hybrid IR camera with ThinkShutter camera privacy, fixed focus	
Memory Type	SO-DIMM. DDR4-3200 for non-ECC, DDR4-2933 for ECC. ECC and non-ECC operate at DDR4-2933. 8GB/16GB/32GB available for both ECC and non-ECC										Audio chip	Realtek ALC3286 codec	
Memory Sockets	4 DIMM sockets										Speaker	Stereo speakers, Dolby Atmos sound system	
Memory Protection	ECC on models with ECC DIMMs and Xeon processor										Microphone	Optional dual array far-field microphone	
Max Memory	128GB										Keyboard	6-row, spill-resistant, LED backlight, numeric keypad, multimedia Fn keys with Unified Communications controls	
Graphics	Support one of the following discrete graphics: <ul style="list-style-type: none"><li>• NVIDIA Quadro T1000, 4GB GDDR6 memory</li><li>• NVIDIA Quadro T2000, 4GB GDDR6 memory</li><li>• NVIDIA Quadro RTX 3000, 6GB GDDR6 memory</li><li>• NVIDIA Quadro RTX 4000 with Max-Q Design, 8GB GDDR6 memory</li><li>• NVIDIA Quadro RTX 5000 with Max-Q Design, 16GB GDDR6 memory</li></ul>										UltraNav	3-button TrackPoint pointing device and 2-button Mylar surface multi-touch touchpad	
											Password	Power-on password, hard disk password, supervisor password	
											Security chip	Discrete TPM 2.0, TCG Certified, may be disabled in some regions	
											System mgmt	Optional Intel vPro Technology supported on vPro enable models	
											Security locks	Security keyhole for optional Kensington lock	
Display	Size	Resolution	Type	Surface	Touch	Brightness	Aspect Ratio	Contrast Ratio	Color Gamut	Viewing Angle	Smart card reader	Optional	
	17.3"	FHD (1920x1080)	WVA	Anti-glare	-	300 nits	16:9	700:1	72% NTSC	160°	Fingerprint reader	Touch style match on chip fingerprint reader on the palm rest	
	17.3"	UHD (3840x2160) Dolby Vision, HDR 400	WVA	Anti-glare	-	500 nits	16:9	1500:1	100% Adobe	178°	Battery	Integrated Li-Polymer 94Wh battery. Supports Rapid Charge (charge up to 80% in 1hr) with 230W AC adapter	
											Max battery life	MobileMark 2014: 14.6 hr. MobileMark 2018: 9.75 hr. <i>* Battery life varies significantly with hardware configurations, settings, usage, &amp; other factors</i>	
											Power Adapter	One of the following: <ul style="list-style-type: none"><li>• 230W slim AC adapter</li><li>• 170W slim AC adapter</li></ul>	
Color Calibration	Factory Color Calibration on UHD panels										Operating system	Supports one optional preloaded operating system as following: <ul style="list-style-type: none"><li>• Windows 10 Home 64</li><li>• Windows 10 Pro 64</li><li>• Windows 10 Pro 64 for Workstations</li><li>• Ubuntu Linux LTS</li></ul>	
Touchscreen	None												
Pen	None												
Storage	Up to two M.2 2280 SSD, PCIe NVMe, 256GB / 512GB / 1TB / 2TB each												
RAID	RAID 0 / 1 support												
Optical	None										Base Warranty	Optional warranty plans as following: <ul style="list-style-type: none"><li>• 1-year depot repair service</li><li>• 3-year depot repair service</li><li>• 1-year + 2-year depot repair service</li><li>• 1-year limited onsite service</li><li>• 3-year limited onsite service</li><li>• 1-year + 2-year limited onsite service</li><li>• 1-year depot with 2-year system board repair service</li></ul>	
Ethernet	One onboard GbE port via integrated gigabit ethernet, Intel i219LM for vPro models or i219V for non-vPro models												
NFC	None												
WLAN + Bluetooth	Optional Intel Wi-Fi 6 AX201 on most models, Wi-Fi 2x2 802.11ax + Bluetooth 5.1. Bluetooth 5.1 requires the latest version of Windows 10 (version 2004 or above)												
WWAN	One of the following, configurable by model: <ul style="list-style-type: none"><li>• No WWAN card and non upgradable</li><li>• Integrated Mobile Broadband Upgradable, No WWAN Card, WWAN Antenna Only</li><li>• Integrated Mobile Broadband 4G LTE-A, Fibocom L860-GL, MIMO 4x4, M.2 card</li></ul>												
SIM card	Optional Nano-SIM card slot										Mil-Spec test	MIL-STD-810G military testing	
											Environment	EPEAT Gold. ENERGY STAR 8.0. RoHS-compliant	
											ISV certifications	Please visit <a href="http://www.thinkworkstations.com/isv-certifications/">www.thinkworkstations.com/isv-certifications/</a>	



# ThinkPad P43s Platform Specifications

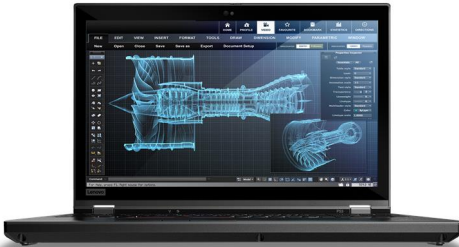
Product Specifications Reference (PSREF)

Processor	8th Generation Intel® Core™ i7 Processor									Dimensions Weight	12.95" x 8.94" x 0.70"; 329mm x 227mm x 17.9mm			
	Processor Number	# of Cores	# of Threads	Base Frequency	Max Turbo Frequency	Cache	Memory Types	Processor Graphics			Models	FHD	FHD Low Power	WQHD
	i5-8365U	4	8	1.6 GHz	4.1 GHz	6MB	DDR4-2400	Intel UHD Graphics	Weight		3.43 lb / 1.55 kg	3.28 lb / 1.49 kg	3.24 lb / 1.47 kg	
	i7-8565U			1.8 GHz	4.6 GHz	8MB			Case color Case material		Black Display cover: PPS / 50% GF; Bottom: PA / 50% GF			
i7-8665U	1.9 GHz			4.8 GHz	8MB									
Graphics	Intel UHD Graphics in processor and NVIDIA Quadro® P520, 2GB GDDR5 memory; supports external digital monitor via HDMI or USB Type-C; Up to 3 displays with 2 external monitors plus system LCD screen. Max resolution: 3840x2160@60Hz (USB-C); 3840x2160@30Hz (HDMI)									Smart card reader	Optional: Smart card reader			
Chipset	Intel SoC (System on Chip) platform 48GB max / 2400MHz DDR4, dual-channel capable, 8GB or 16GB memory soldered to systemboard, one DDR4 SO-DIMM socket * Installed memory is actually 2666MHz but run at 2400MHz due to Intel limitation									Media reader	MicroSD card reader			
Memory										Ports	Two USB 3.1 Gen 1 (one Always On), one USB 3.1 Type-C Gen 1 (with the function of Power Delivery and DisplayPort), one USB 3.1 Type-C Gen 2 / Thunderbolt 3 (with the function of PD and DP), HDMI 1.4b, Ethernet (RJ-45), nano-SIM card slot (WWAN models), headphone / microphone combo jack, optional smart card reader, microSD card reader, side docking connector, security keyhole * Depending on many factors, actual data transfer speed may be lower than theoretical speed			
Display	Size	Resolution	Type	Surface	Brightness	Aspect Ratio	Contrast Ratio	Color Gamut	Viewing Angle	Monitor cable (optional)	HDMI to VGA: Lenovo HDMI to VGA Monitor Adapter USB-C to VGA: Lenovo USB-C to VGA Adapter USB-C to HDMI: Lenovo USB-C to HDMI Adapter USB-C to DP: Lenovo USB-C to DisplayPort Adapter			
	14.0"	FHD (1920x1080)	WVA	Anti-glare	250 nits (non-touch) 300 nits (multi-touch)	16:9	700:1	45%	170°	Bundled Accy	None			
	14.0"	FHD (1920x1080) Low Power	WVA	Anti-glare	400 nits	16:9	800:1	72%	170°	Camera (optional)	One of the following, configurable by model: • HD720p camera with ThinkShutter camera privacy, fixed focus • IR camera and HD720p camera with ThinkShutter camera privacy, fixed focus			
	14.0"	FHD (1920x1080) ThinkPad Privacy Guard	WVA	Anti-glare	400 nits	16:9	1000:1	72%	170°	Audio support	HD Audio, Realtek® ALC3287 codec / stereo speakers, 2W x 2, Dolby® Audio™ Premium / optional dual array far-field microphone, headphone / microphone combo jack			
	14.0"	WQHD (2560x1440) Dolby Vision™ HDR	WVA	Glossy	500 nits	16:9	1500:1	100% Adobe	170°	Keyboard UltraNav™	6-row, spill-resistant, multimedia Fn keys, LED backlight TrackPoint® pointing device and buttonless Mylar surface multi-touch touchpad			
Multi-touch (opt) Pen	On-cell touch, supports 10-finger gesture (FHD only) None									Security	Power-on password, hard disk password, supervisor password, security keyhole			
Storage	Supports single sided M.2 2280 drives only • M.2 2280 SSD / SATA 6.0Gb/s • M.2 2280 SSD / PCIe NVMe, PCIe 3.0 x 4 • M.2 2242 SSD / PCIe NVMe, PCIe 3.0 x 2 • Intel Optane™ Memory H10 with Solid State Storage, M.2 2280, PCIe NVMe 3.0 x 4									Security chip	Discrete TPM 2.0, TCG Certified			
										System Mgt (opt)	Intel vPro Technology			
Optical	None									Fingerprint reader	Optional: Touch style match on chip fingerprint reader on the palm rest			
										NFC (optional)	Near Field Communication			
Ethernet	Non-vPro model: Intel Ethernet Connection I219-V (Jacksonville) vPro model: Intel Ethernet Connection I219-LM (Jacksonville)									Battery	Integrated Li- Polymer 50Wh battery, supports Rapid Charge (charge up to 80% in 1hr)			
										Max battery life	MobileMark® 2014: 14.7 hr			
WLAN Bluetooth™	Intel Wireless-AC 9560, Wi-Fi 2x2 802.11ac + Bluetooth 5.0 Bluetooth 5.0 wireless, integrated in Wi-Fi + Bluetooth combo adapter									AC adapter	* Battery life varies significantly with hardware configurations, settings, usage, & other factors 65W or 65W slim USB Type-C AC adapter			
										Operating system	Windows® 10 Home 64 or Windows 10 Pro 64			
WWAN (optional)	One of the following, configurable by model: • Wireless WAN upgradable (special bid only in EMEA) • Integrated Mobile Broadband 4G LTE, Fibocom L830-EB, M.2 card (EMEA only) • Integrated Mobile Broadband 4G LTE-A, Fibocom L850-GL, M.2 card * For non-WWAN model, it means the model is NOT WWAN upgradable									Limited warranty	One of the following, configurable by model: • 1-year depot repair service • 3-year/1-yr battery depot repair service • 3-year/1-yr battery limited onsite service			
SIM card (opt)	Nano-SIM card slot, optional Verizon LTE (US) SIM card									Mil-Spec test	MIL-STD-810G military testing			
										Environment	EPEAT™ Gold; ENERGY STAR® 8.0; RoHS-compliant			

Note: The specifications above may not be available in all regions.

Lenovo  
July 2020





# ThinkPad P53 Platform Specifications

Product Specifications Reference (PSREF)

Processor	9th Generation Intel® Core™ i5 / i7 / i9 Processor or Intel Xeon® E Processor							
	Processor Number	# of Cores	# of Threads	Base Frequency	Max Turbo Frequency	Cache	Memory Types	Processor Graphics
	i5-9400H	4	8	2.5 GHz	4.3 GHz	8MB	DDR4-2666	Intel UHD Graphics 630
	i7-9750H	6	12	2.6 GHz	4.5 GHz	12MB		
	i7-9850H	6	12	2.6 GHz	4.6 GHz	12MB		
	i9-9880H	8	16	2.3 GHz	4.8 GHz	16MB		
	E-2276M	6	12	2.8 GHz	4.7 GHz	12MB		Intel UHD Graphics P630
Graphics	Intel UHD Graphics 630 or P630 in processor and NVIDIA® Quadro® T1000 (4GB GDDR5), T2000 (4GB GDDR5), RTX 3000 (6GB GDDR6, VR ready), RTX 4000 (8GB GDDR6, VR ready), or RTX 5000 (16GB GDDR6, VR ready); supports external digital monitor via HDMI or Thunderbolt™; Up to 5 displays with 4 external monitors plus system LCD screen. Max resolution: 5K@60Hz (Thunderbolt); 4K@60Hz (USB-C or HDMI)							
Chipset	Mobile Intel CM246 Chipset							
Memory	128GB max / 2666MHz DDR4 (ECC function supported only on Xeon processor), dual-channel capable, four DDR4 SO-DIMM sockets							
Display	Size	Resolution	Type	Surface	Brightness	Aspect Ratio	Contrast Ratio	Color Gamut
	15.6"	FHD (1920x1080)	WVA	Anti-glare	300 nits	16:9	700:1	72%
	15.6"	FHD (1920x1080) Dolby Vision™ HDR	WVA	Anti-glare	500 nits	16:9	1200:1	72%
	15.6"	UHD (3840x2160) Dolby Vision HDR	WVA	Anti-glare	500 nits	16:9	1200:1	100%
	15.6"	UHD (3840x2160) Dolby Vision HDR, Multi-touch	OLED	Anti-reflection / Anti-smudge	SDR 400nit, HDR 500nit (peak)	16:9	100000:1	100% DCI-P3
Multi-touch (opt)	Capacitive-type multi-touch, supports 10-finger gesture (UHD only), anti-reflection (AR), anti-smudge (AS) coating							
Pen (optional)	Lenovo Pen Pro (special bid only)							
Storage	Up to 3 drives (3x M.2 SSD or 1x HDD + 2x M.2 SSD), supports single sided M.2 2280 drives only • HDD / SATA 6.0Gb/s, 2.5" wide, 7mm high, Active Protection System™ • M.2 2280 SSD / PCIe NVMe, PCIe 3.0 x 4 * HDD is only available for T1000 and T2000 graphics model							
Optane™ memory	Optional: Intel Optane memory, PCIe NVMe, PCIe 3.0 x 2							
RAID (optional)	RAID 0/1/5 support							
Optical	None							
Ethernet	Non-vPro model: Intel Ethernet Connection I219-V (Jacksonville) vPro model: Intel Ethernet Connection I219-LM (Jacksonville)							
WLAN (optional)	Intel Wi-Fi 6 AX200, Wi-Fi 2x2 802.11ax + Bluetooth 5.1							
Bluetooth™ (opt)	Bluetooth 5.1 wireless, integrated in Wi-Fi + Bluetooth combo adapter							
WWAN (optional)	One of the following, configurable by model: • Wireless WAN upgradable (special bid only in EMEA) • Integrated Mobile Broadband 4G LTE-A, Fibocom L850-GL, M.2 card * For non-WWAN model, it means the model is NOT WWAN upgradable							
SIM card (opt)	Nano-SIM card slot, optional Verizon LTE (US) SIM card							
Dimensions		WxDxH (non-touch): 14.86" x 9.93" x 0.96-1.16"; 377.4mm x 252.3mm x 24.5-29.4mm WxDxH (multi-touch): 14.86" x 9.93" x 1.02-1.21"; 377.4mm x 252.3mm x 25.8-30.7mm						
Weight		Non-touch model: starting at 5.51 lb / 2.5 kg; Multi-touch model: starting at 6.4 lb / 2.9 kg						
Case color		Black						
Case material		Display cover: Glass-Fiber Reinforced Plastic; Bottom: Magnesium/Aluminum						
Smart card reader		Optional: Smart card reader						
ExpressCard		None						
Media reader		4-in-1 reader (MMC, SD, SDHC, SDXC), supports UHS-II SD card						
Ports		Two USB 3.1 Gen 1 (one Always On), one USB 3.1 Type-C Gen 1 (with the function of Power Delivery and DisplayPort), two USB 3.1 Type-C Gen 2 / Thunderbolt 3 (with the function of PD and DP), HDMI 2.0, Ethernet (RJ-45), nano-SIM card slot (WWAN models), headphone / microphone combo jack, optional smart card reader, 4-in-1 reader (MMC, SD, SDHC, SDXC), security keyhole * Power Delivery only supports power-out for charging peripherals * USB-C Dock is not supported in right-side USB-C port * Depending on many factors, actual data transfer speed may be lower than theoretical speed						
Monitor cable (optional)		HDMI to VGA: Lenovo HDMI to VGA Monitor Adapter USB-C to VGA: Lenovo USB-C to VGA Adapter USB-C to DP: Lenovo USB-C to DisplayPort Adapter						
Bundled Accy		None						
Camera (optional)		One of the following, configurable by model: • HD720p camera with ThinkShutter camera privacy, fixed focus • IR camera and HD720p camera with ThinkShutter camera privacy, fixed focus						
Audio support		HD Audio, Synaptic® CX11880 codec / stereo speakers, 2W x 2 / optional dual array far-field microphone, headphone / microphone combo jack, Dolby Atmos® sound system						
Keyboard UltraNav™		6-row, spill-resistant, multimedia Fn keys, numeric keypad, LED backlight 3-button TrackPoint® pointing device and 3-button Mylar surface multi-touch touchpad						
Security		Power-on password, hard disk password, supervisor password, security keyhole						
Security chip		Discrete TPM 2.0, TCG Certified						
vPro (optional)		Intel vPro Technology						
Fingerprint reader		Touch style match on chip fingerprint reader on the palm rest						
Color calibration		Optional: X-Rite Pantone factory color calibration (UHD model only)						
NFC (optional)		Near Field Communication						
Battery		Integrated Li- Polymer 90Wh battery, supports Rapid Charge (charge up to 80% in 1hr)						
Max battery life (MobileMark® 2014)		Discrete mode: 8 hr; Hybrid mode: 13 hr * Battery life varies significantly with hardware configurations, settings, usage, & other factors						
AC adapter		170W or 230W slim tip AC adapter						
Operating system		One of the following, configurable by model: • Windows® 10 Home 64 • Windows 10 Pro 64 • Windows 10 Pro 64 for Workstations						
Limited warranty		One of the following, configurable by model: • 1-year depot repair service • 3-year/1-yr battery depot repair service • 3-year/1-yr battery limited onsite service						
Mil-Spec test		MIL-STD-810G military testing						
Environment		EPEAT™ Gold; ENERGY STAR® 8.0; RoHS-compliant						

Note: The specifications above may not be available in all regions.

Lenovo  
November 2019



# ThinkPad P53s Platform Specifications

Product Specifications Reference (PSREF)

Processor	8th Generation Intel® Core™ i7 Processor									Dimensions Weight Case color Case material	WxDxH: 14.40" x 9.76" x 0.75"; 365.8mm x 248mm x 19.1mm starting at 3.87 lb / 1.75 kg Black Display cover: PPS / 50% GF; Bottom: PA / 50% GF
	Processor Number	# of Cores	# of Threads	Base Frequency	Max Turbo Frequency	Cache	Memory Types	Processor Graphics			
	i5-8365U	4	8	1.6 GHz	4.1 GHz	6MB	DDR4-2400	Intel UHD Graphics			
	i7-8565U			1.8 GHz	4.6 GHz	8MB					
i7-8665U	1.9 GHz			4.8 GHz	8MB						
Graphics	Intel UHD Graphics in processor and NVIDIA Quadro® P520, 2GB GDDR5 memory; supports external digital monitor via HDMI or USB Type-C; supports 3 independent displays with 2 external monitors plus system LCD screen. Max resolution: 3840x2160@60Hz (USB-C); 3840x2160@30Hz (HDMI)									Smart card reader	Optional: Smart card reader
Chipset	Intel SoC (System on Chip) platform									Media reader	MicroSD card reader
Memory	48GB max / 2400MHz DDR4, dual-channel capable, 8GB or 16GB memory soldered to systemboard, one DDR4 SO-DIMM socket * Installed memory is actually 2666MHz but run at 2400MHz due to Intel limitation									Ports	Two USB 3.1 Gen 1 (one Always On), one USB 3.1 Type-C Gen 1 (with the function of Power Delivery and DisplayPort), one USB 3.1 Type-C Gen 2 / Thunderbolt 3 (with the function of PD and DP), HDMI 1.4b, Ethernet (RJ-45), nano-SIM card slot (WWAN models), headphone / microphone combo jack, optional smart card reader, microSD card reader, side docking connector, security keyhole * Depending on many factors, actual data transfer speed may be lower than theoretical speed
Display	Size	Resolution	Type	Surface	Brightness	Aspect Ratio	Contrast Ratio	Color Gamut	Viewing Angle	Monitor cable (optional)	HDMI to VGA: Lenovo HDMI to VGA Monitor Adapter USB-C to VGA: Lenovo USB-C to VGA Adapter USB-C to DP: Lenovo USB-C to DisplayPort Adapter
	15.6"	FHD (1920x1080)	WVA	Anti-glare	250 nits	16:9	700:1	45%	170°	Bundled Accy	None
	15.6"	UHD (3840x2160) Dolby Vision™ HDR	WVA	Anti-glare	500 nits	16:9	1200:1	100% Adobe	170°	Camera (optional)	One of the following, configurable by model: • HD720p camera with ThinkShutter camera privacy, fixed focus • IR camera and HD720p camera with ThinkShutter camera privacy, fixed focus
Multi-touch (opt)	On-cell touch, supports 10-finger gesture (FHD only)									Audio support	HD Audio, Realtek® ALC3287 codec / stereo speakers, 2W x 2, Dolby® Audio™ Premium / optional dual array far-field microphone, headphone / microphone combo jack
Pen	None										
Storage	Supports single sided M.2 2280 drives only • M.2 2280 SSD / SATA 6.0Gb/s • M.2 2280 SSD / PCIe NVMe, PCIe 3.0 x 4 • M.2 2242 SSD / PCIe NVMe, PCIe 3.0 x 2 • Intel Optane™ Memory H10 with Solid State Storage, M.2 2280, PCIe NVMe 3.0 x 4										
Optical	None										
Ethernet	Non-vPro model: Intel Ethernet Connection I219-V (Jacksonville) vPro model: Intel Ethernet Connection I219-LM (Jacksonville)									Keyboard	6-row, spill-resistant, multimedia Fn keys, numeric keypad, optional LED backlight
WLAN	Intel Wireless-AC 9560, Wi-Fi 2x2 802.11ac + Bluetooth 5.0									UltraNav™	TrackPoint® pointing device and buttonless Mylar surface multi-touch touchpad
Bluetooth™	Bluetooth 5.0 wireless, integrated in Wi-Fi + Bluetooth combo adapter									Security	Power-on password, hard disk password, supervisor password, security keyhole
WWAN (optional)	One of the following, configurable by model: • Wireless WAN upgradable (special bid only in EMEA) • Integrated Mobile Broadband 4G LTE, Fibocom L830-EB, M.2 card (EMEA only) • Integrated Mobile Broadband 4G LTE-A, Fibocom L850-GL, M.2 card * For non-WWAN model, it means the model is NOT WWAN upgradable									Security chip	Discrete TPM 2.0, TCG Certified
	Nano-SIM card slot, optional Verizon LTE (US) SIM card									System Mgt (opt)	Intel vPro Technology
										Fingerprint reader	Optional: Touch style match on chip fingerprint reader on the palm rest
SIM card (opt)										NFC (optional)	Near Field Communication
										Battery	Integrated Li- Polymer 57Wh battery, supports Rapid Charge (charge up to 80% in 1hr)
										Max battery life	MobileMark® 2014: 15 hr (FHD model) / 10 hr (UHD model) * Battery life varies significantly with hardware configurations, settings, usage, & other factors
										AC adapter	65W USB Type-C AC adapter
										Operating system	Windows® 10 Home 64 or Windows 10 Pro 64
										Limited warranty	One of the following, configurable by model: • 1-year depot repair service • 3-year/1-yr battery depot repair service • 3-year/1-yr battery limited onsite service
										Mil-Spec test	MIL-STD-810G military testing
										Environment	EPEAT™ Gold; ENERGY STAR® 8.0; RoHS-compliant

Note: The specifications above may not be available in all regions.

Lenovo  
September 2020





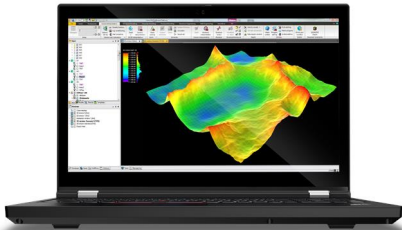
## ThinkPad P73 Platform Specifications

Product Specifications Reference (PSREF)

Processor	9th Generation Intel® Core™ i5 / i7 / i9 Processor or Intel Xeon® E Processor									Dimensions Weight Case color Case material	WxDxH: 16.38" x 11.06" x 1.02-1.22"; 416mm x 281mm x 25.9-31mm Starting at 7.5 lb (3.4kg) Black Display cover: GFRP + PPS; Bottom: Magnesium/Aluminum
	Processor Number	# of Cores	# of Threads	Base Frequency	Max Turbo Frequency	Cache	Memory Types	Processor Graphics			
	i5-9400H	4	8	2.5 GHz	4.3 GHz	8MB	DDR4-2666	Intel UHD Graphics 630			
	i7-9750H	6	12	2.6 GHz	4.5 GHz	12MB					
	i7-9850H	6	12	2.6 GHz	4.6 GHz	12MB					
	i9-9880H	8	16	2.3 GHz	4.8 GHz	16MB					
E-2276M	6	12	2.8 GHz	4.7 GHz	12MB		Intel UHD Graphics P630				
Graphics	Intel UHD Graphics 630 or P630 in processor and NVIDIA Quadro® P620 (4GB GDDR5), T2000 (4GB GDDR5), RTX 3000 (6GB GDDR6, VR ready), RTX 4000 Max-Q (8GB GDDR6, VR ready), or RTX 5000 Max-Q (16GB GDDR6, VR ready); Up to 5 displays with 4 external monitors plus system LCD screen. External monitors supported via USB-C, Thunderbolt, and HDMI Max resolution: 5K@60Hz (Thunderbolt); 4K@60Hz (USB-C or HDMI)									Smart card reader	Optional: Smart card reader
Chipset	Mobile Intel CM246 Chipset									ExpressCard	None
Memory	128GB max / 2666MHz DDR4 (ECC function supported only on Xeon processor), dual-channel capable, four DDR4 SO-DIMM sockets									Media reader	4-in-1 reader (MMC, SD, SDHC, SDXC), supports UHS-II SD card
Display	Size	Resolution	Type	Surface	Brightness	Aspect Ratio	Contrast Ratio	Color Gamut	Viewing Angle	Ports	Three USB 3.1 Gen 1 (one Always On), one USB 3.1 Type-C Gen 1 (with the function of Power Delivery and DisplayPort), two USB 3.1 Type-C Gen 2 / Thunderbolt 3 (with the function of PD and DP), HDMI 2.0, Ethernet (RJ-45), headphone / microphone combo jack, optional smart card reader, 4-in-1 reader (MMC, SD, SDHC, SDXC), security keyhole * Power Delivery only supports power-out for charging peripherals * Depending on many factors, actual data transfer speed may be lower than theoretical speed
	17.3"	FHD (1920x1080)	WVA	Anti-glare	300 nits	16:9	700:1	72%	160°	Monitor cable (optional)	HDMI to VGA: Lenovo HDMI to VGA Monitor Adapter USB-C to VGA: Lenovo USB-C to VGA Adapter USB-C to DP: Lenovo USB-C to DisplayPort Adapter
	17.3"	UHD (3840x2160) Dolby Vision™ HDR	WVA	Anti-glare	400 nits	16:9	1000:1	100%	170°	Bundled Accy	None
Multi-touch	None									Camera (optional)	IR camera and HD720p camera with ThinkShutter camera privacy, fixed focus
Pen	None									Audio support	HD Audio, Synaptic® CX11880 codec / stereo speakers, 2W x 2 / dual array far-field microphone, headphone / microphone combo jack, Dolby Atmos® sound system
Storage	Up to 3 drives (two M.2 SSD and one HDD), supports single sided M.2 2280 drives only • HDD / SATA 6.0Gb/s, 2.5" wide, 7mm high, Active Protection System™ • M.2 2280 SSD / PCIe NVMe, PCIe 3.0 x 4									Keyboard	6-row, spill-resistant, multimedia Fn keys, numeric keypad, LED backlight
Optane™ memory	Optional: Intel Optane memory, PCIe NVMe, PCIe 3.0 x 2									UltraNav™	3-button TrackPoint® pointing device and 3-button Mylar surface multi-touch touchpad
RAID (optional)	RAID 0/1 support									Security	Power-on password, hard disk password, supervisor password, security keyhole
Optical	None									Security chip	Discrete TPM 2.0, TCG Certified
Ethernet	Non-vPro model: Intel Ethernet Connection I219-V (Jacksonville) vPro model: Intel Ethernet Connection I219-LM (Jacksonville)									vPro (optional)	Intel vPro Technology
WLAN (optional)	Intel Wi-Fi 6 AX200, Wi-Fi 2x2 802.11ax + Bluetooth 5.1									Fingerprint reader	Touch style match on chip fingerprint reader on the palm rest
Bluetooth™ (opt)	Bluetooth 5.1 wireless, integrated in Wi-Fi + Bluetooth combo adapter									Color calibration	Optional: X-Rite Pantone factory color calibration (UHD model only)
WWAN	None									NFC (optional)	Near Field Communication
SIM card	None									Battery	Integrated Li- Polymer 99Wh battery, supports Rapid Charge (charge up to 80% in 1hr)
										Max battery life	MobileMark® 2014: 17.2 hr * Battery life varies significantly with hardware configurations, settings, usage, & other factors
										AC adapter	170W or 230W slim tip AC adapter
										Operating system	One of the following, configurable by model: • Windows® 10 Home 64 • Windows 10 Pro 64 • Windows 10 Pro 64 for Workstations
										Limited warranty	One of the following, configurable by model: • 1-year depot repair service • 3-year/1-yr battery depot repair service • 3-year/1-yr battery limited onsite service
										Mil-Spec test	MIL-STD-810G military testing
										Environment	EPEAT™ Gold; ENERGY STAR® 8.0; RoHS-compliant

Note: The specifications above may not be available in all regions.

Lenovo  
November 2019



# ThinkPad T15g Gen 1 Platform Specifications

Product Specifications Reference (PSREF)

Processor	Supports one 10th Xeon W, Core i9, i7, or i5 processor as following:										SIM card	Optional Nano-SIM card slot		
	Processor Number	# of Cores	# of Threads	Base Frequency	Max Turbo Frequency	Cache	Memory Types	Processor Graphics	Dimensions	Width: 375.4 mm (14.78 in). Depth: 252.3 mm (9.93 in). Thickness for non-touch models: 24.5 ~ 31.45 mm (0.96 ~ 1.24 in) Thickness for touch models: 25.25 ~ 32.2mm (0.99 ~ 1.27 in)				
	Xeon W-10885M	8	16	2.4GHz	5.3GHz	16MB	DDR4-2933	Intel UHD Graphics	Weight	Starting at 2.74 kg (6.05 lb, FHD)				
	Xeon W-10855M	6	12	2.8GHz	5.1GHz	12MB	DDR4-2933	Intel UHD Graphics	Case color	Black				
	Core i9-10980HK	8	16	2.4GHz	5.3GHz	16MB	DDR4-2933	Intel UHD Graphics	Case material	Display cover: GFRP 50% (PPS695 + GF 50%). Bottom: PPS + GF				
	Core i9-10885H	8	16	2.4GHz	5.3GHz	16MB	DDR4-2933	Intel UHD Graphics	Media reader	SD card reader				
	Core i7-10875H	8	16	2.3GHz	5.1GHz	16MB	DDR4-2933	Intel UHD Graphics	Standard Ports	1x USB-C (USB 3.2 Gen 1, PD, DP), 2x Thunderbolt (USB-C form, Thunderbolt 3, USB 3.2 Gen 2, PD, DP), 2x USB-A 3.2 Gen 1 (one Always-on), 1x HDMI 2.0, 1x headphone / microphone combo jack, 1x SD card reader, 1x security keyhole, 1x RJ-45				
	Core i7-10850H	6	12	2.7GHz	5.1GHz	12MB	DDR4-2933	Intel UHD Graphics	Optional Ports	One optional smart card reader on right, one optional Nano-SIM card slot on left				
	Core i7-10750H	6	12	2.6GHz	5.0GHz	12MB	DDR4-2933	Intel UHD Graphics	Monitor support	Up to 5 displays with 4 external monitors plus system LCD screen. External monitors supported via 1x USB-C, 2x Thunderbolt, and 1x HDMI. USB-C and HDMI support up to 4K@60Hz. With Thunderbolt, one supports up to 5K@60Hz and one supports up to 4K@60Hz				
	Core i5-10400H	4	8	2.6GHz	4.6GHz	8MB	DDR4-2933	Intel UHD Graphics	Monitor cable	Optional HDMI to VGA, USB-C to DP, or USB-C to VGA adapters				
Chipset	Intel WM490 Chipset										Bundled Accy	None		
Memory Type	SO-DIMM. DDR4-3200 non-ECC or DDR4-2933 ECC. Both ECC and non-ECC operate at DDR4-2933. 8GB/16GB/32GB available for both ECC and non-ECC										Camera	Supports one optional camera as following: • HD720p camera with ThinkShutter camera privacy, fixed focus • Hybrid IR camera with ThinkShutter camera privacy, fixed focus		
Memory Sockets	4 DIMM sockets										Audio chip	Realtek ALC3286 codec		
Memory Protection	ECC on models with ECC DIMMs and Xeon processor										Speaker	Stereo speakers, Dolby Atmos sound system		
Max Memory	128GB										Microphone	Optional dual array far-field microphone		
Graphics	Support one of the following discrete graphics: • NVIDIA GeForce RTX 2070 SUPER with Max-Q Design, 8GB GDDR6 memory • NVIDIA GeForce RTX 2080 SUPER with Max-Q Design, 8GB GDDR6 memory										Keyboard	6-row, spill-resistant, LED backlight, numeric keypad, multimedia Fn keys with Unified Communications controls.		
Display	Size	Resolution	Type	Surface	Touch	Brightness	Aspect Ratio	Contrast Ratio	Color Gamut	Viewing Angle	UltraNav	3-button TrackPoint pointing device and 2-button Mylar surface multi-touch touchpad		
	15.6"	FHD (1920x1080)	WVA	Anti-glare	-	300 nits	16:9	700:1	72% NTSC	160°	Password	Power-on password, hard disk password, supervisor password		
	15.6"	FHD (1920x1080) Dolby Vision, HDR 400	WVA	Anti-glare	-	500 nits	16:9	1200:1	72% NTSC	160°	Security chip	Discrete TPM 2.0, TCG Certified, may be disabled in some regions		
	15.6"	UHD (3840x2160) Dolby Vision, HDR 400	WVA	Anti-glare	-	600 nits	16:9	1400:1	100% Adobe	178°	System mgmt	Optional Intel vPro Technology supported on vPro enable models		
	15.6"	UHD (3840x2160) Dolby Vision, HDR 400	OLED	Anti-reflection / Anti-smudge	multi-touch	SDR 400nit, HDR 500nit (peak)	16:9	100000:1	100% DCI-P3	170°	Security locks	Security keyhole for optional Kensington lock		
Color Calibration	Factory Color Calibration on UHD panels										Smart card reader	Optional		
Touchscreen	Touch enable on selected UHD OLED models, supports 10-finger gesture										Fingerprint reader	Touch style match on chip fingerprint reader on the palm rest		
Pen	Optional Lenovo Pen Pro										Battery	Integrated Li-Polymer 94Wh battery. Supports Rapid Charge (charge up to 80% in 1hr) with 230W AC adapter		
Storage	Up to two M.2 2280 SSD, PCIe NVMe, 256GB / 512GB / 1TB / 2TB each										Max battery life	MobileMark 2014: 16.4 hr. MobileMark 2018: 10.3 hr <i>* Battery life varies significantly with hardware configurations, settings, usage, &amp; other factors</i>		
RAID	RAID 0 / 1 support										Power Adapter	One of the following: • 230W slim AC adapter • 170W slim AC adapter		
Optical	None										Operating system	Supports one optional preloaded operating system as following: • Windows 10 Home 64 • Windows 10 Pro 64 • Windows 10 Pro 64 for Workstations • Ubuntu Linux LTS • Fedora Linux		
Ethernet	One onboard GbE port via integrated gigabit ethernet, Intel i219LM for vPro models or i219V for non-vPro models											Base Warranty	Optional warranty plans as following: • 1-year depot repair service • 3-year depot repair service • 1-year + 2-year depot repair service • 1-year limited onsite service • 3-year limited onsite service • 1-year + 2-year limited onsite service • 1-year depot with 2-year system board repair service	
NFC	None												Mil-Spec test	MIL-STD-810G military testing
WLAN + Bluetooth	Optional Intel Wi-Fi 6 AX201 on most models, Wi-Fi 2x2 802.11ax + Bluetooth 5.1. Bluetooth 5.1 requires the latest version of Windows 10 (version 2004 or above)										Environment		EPEAT Gold. ENERGY STAR 8.0. RoHS-compliant	
WWAN	One of the following, configurable by model: • No WWAN card and non upgradable • Integrated Mobile Broadband Upgradable, No WWAN Card, WWAN Antenna Only • Integrated Mobile Broadband 4G LTE-A, Fibocom L860-GL, MIMO 4x4, M.2 card <i>Note: WWAN cannot be supported on UHD WVA models</i>										ISV certifications	None		

# ThinkPad T15g Gen 1 Platform Specifications

Product Specifications Reference (PSREF)

Processor	Supports one 10th Xeon W, Core i9, i7, or i5 processor as following:										SIM card	Optional Nano-SIM card slot		
	Processor Number	# of Cores	# of Threads	Base Frequency	Max Turbo Frequency	Cache	Memory Types	Processor Graphics	Dimensions	Width: 375.4 mm (14.78 in). Depth: 252.3 mm (9.93 in). Thickness for non-touch models: 24.5 ~ 31.45 mm (0.96 ~ 1.24 in) Thickness for touch models: 25.25 ~ 32.2mm (0.99 ~ 1.27 in)				
	Xeon W-10885M	8	16	2.4GHz	5.3GHz	16MB	DDR4-2933	Intel UHD Graphics	Weight	Starting at 2.74 kg (6.05 lb, FHD)				
	Xeon W-10855M	6	12	2.8GHz	5.1GHz	12MB	DDR4-2933	Intel UHD Graphics	Case color	Black				
	Core i9-10980HK	8	16	2.4GHz	5.3GHz	16MB	DDR4-2933	Intel UHD Graphics	Case material	Display cover: GFRP 50% (PPS695 + GF 50%). Bottom: PPS + GF				
	Core i9-10885H	8	16	2.4GHz	5.3GHz	16MB	DDR4-2933	Intel UHD Graphics	Media reader	SD card reader				
	Core i7-10875H	8	16	2.3GHz	5.1GHz	16MB	DDR4-2933	Intel UHD Graphics	Standard Ports	1x USB-C (USB 3.2 Gen 1, PD, DP), 2x Thunderbolt (USB-C form, Thunderbolt 3, USB 3.2 Gen 2, PD, DP), 2x USB-A 3.2 Gen 1 (one Always-on), 1x HDMI 2.0, 1x headphone / microphone combo jack, 1x SD card reader, 1x security keyhole, 1x RJ-45				
	Core i7-10850H	6	12	2.7GHz	5.1GHz	12MB	DDR4-2933	Intel UHD Graphics	Optional Ports	One optional smart card reader on right, one optional Nano-SIM card slot on left				
	Core i7-10750H	6	12	2.6GHz	5.0GHz	12MB	DDR4-2933	Intel UHD Graphics	Monitor support	Up to 5 displays with 4 external monitors plus system LCD screen. External monitors supported via 1x USB-C, 2x Thunderbolt, and 1x HDMI. USB-C and HDMI support up to 4K@60Hz. With Thunderbolt, one supports up to 5K@60Hz and one supports up to 4K@60Hz				
	Core i5-10400H	4	8	2.6GHz	4.6GHz	8MB	DDR4-2933	Intel UHD Graphics	Monitor cable	Optional HDMI to VGA, USB-C to DP, or USB-C to VGA adapters				
Chipset	Intel WM490 Chipset										Bundled Accy	None		
Memory Type	SO-DIMM. DDR4-3200 non-ECC or DDR4-2933 ECC. Both ECC and non-ECC operate at DDR4-2933. 8GB/16GB/32GB available for both ECC and non-ECC										Camera	Supports one optional camera as following: • HD720p camera with ThinkShutter camera privacy, fixed focus • Hybrid IR camera with ThinkShutter camera privacy, fixed focus		
Memory Sockets	4 DIMM sockets										Audio chip	Realtek ALC3286 codec		
Memory Protection	ECC on models with ECC DIMMs and Xeon processor										Speaker	Stereo speakers, Dolby Atmos sound system		
Max Memory	128GB										Microphone	Optional dual array far-field microphone		
Graphics	Support one of the following discrete graphics: • NVIDIA GeForce RTX 2070 SUPER with Max-Q Design, 8GB GDDR6 memory • NVIDIA GeForce RTX 2080 SUPER with Max-Q Design, 8GB GDDR6 memory										Keyboard	6-row, spill-resistant, LED backlight, numeric keypad, multimedia Fn keys with Unified Communications controls.		
Display	Size	Resolution	Type	Surface	Touch	Brightness	Aspect Ratio	Contrast Ratio	Color Gamut	Viewing Angle	UltraNav	3-button TrackPoint pointing device and 2-button Mylar surface multi-touch touchpad		
	15.6"	FHD (1920x1080)	WVA	Anti-glare	-	300 nits	16:9	700:1	72% NTSC	160°	Password	Power-on password, hard disk password, supervisor password		
	15.6"	FHD (1920x1080) Dolby Vision, HDR 400	WVA	Anti-glare	-	500 nits	16:9	1200:1	72% NTSC	160°	Security chip	Discrete TPM 2.0, TCG Certified, may be disabled in some regions		
	15.6"	UHD (3840x2160) Dolby Vision, HDR 400	WVA	Anti-glare	-	600 nits	16:9	1400:1	100% Adobe	178°	System mgmt	Optional Intel vPro Technology supported on vPro enable models		
	15.6"	UHD (3840x2160) Dolby Vision, HDR 400	OLED	Anti-reflection / Anti-smudge	multi-touch	SDR 400nit, HDR 500nit (peak)	16:9	100000:1	100% DCI-P3	170°	Security locks	Security keyhole for optional Kensington lock		
Color Calibration	Factory Color Calibration on UHD panels										Smart card reader	Optional		
Touchscreen	Touch enable on selected UHD OLED models, supports 10-finger gesture										Fingerprint reader	Touch style match on chip fingerprint reader on the palm rest		
Pen	Optional Lenovo Pen Pro										Battery	Integrated Li-Polymer 94Wh battery. Supports Rapid Charge (charge up to 80% in 1hr) with 230W AC adapter		
Storage	Up to two M.2 2280 SSD, PCIe NVMe, 256GB / 512GB / 1TB / 2TB each										Max battery life	MobileMark 2014: 16.4 hr. MobileMark 2018: 10.3 hr <i>* Battery life varies significantly with hardware configurations, settings, usage, &amp; other factors</i>		
RAID	RAID 0 / 1 support										Power Adapter	One of the following: • 230W slim AC adapter • 170W slim AC adapter		
Optical	None										Operating system	Supports one optional preloaded operating system as following: • Windows 10 Home 64 • Windows 10 Pro 64 • Windows 10 Pro 64 for Workstations • Ubuntu Linux LTS • Fedora Linux		
Ethernet	One onboard GbE port via integrated gigabit ethernet, Intel i219LM for vPro models or i219V for non-vPro models											Base Warranty	Optional warranty plans as following: • 1-year depot repair service • 3-year depot repair service • 1-year + 2-year depot repair service • 1-year limited onsite service • 3-year limited onsite service • 1-year + 2-year limited onsite service • 1-year depot with 2-year system board repair service	
NFC	None												Mil-Spec test	MIL-STD-810G military testing
WLAN + Bluetooth	Optional Intel Wi-Fi 6 AX201 on most models, Wi-Fi 2x2 802.11ax + Bluetooth 5.1. Bluetooth 5.1 requires the latest version of Windows 10 (version 2004 or above)										Environment		EPEAT Gold. ENERGY STAR 8.0. RoHS-compliant	
WWAN	One of the following, configurable by model: • No WWAN card and non upgradable • Integrated Mobile Broadband Upgradable, No WWAN Card, WWAN Antenna Only • Integrated Mobile Broadband 4G LTE-A, Fibocom L860-GL, MIMO 4x4, M.2 card <i>Note: WWAN cannot be supported on UHD WVA models</i>										ISV certifications	None		



This publication was developed for products and services offered in the United States and E.M.E.A countries. Lenovo may not offer the products, services or features discussed in this document in other countries. Lenovo may withdraw an offering at any time. Information is subject to change without notice. Consult your local representative for information on offerings available in your area.

Lenovo reserves the right to change specifications or other product information without notice. Lenovo is not responsible for photographic or typographical errors.

LENOVO PROVIDES THIS PUBLICATION "AS IS," WITHOUT WARRANTY OF ANY KIND, EITHER EXPRESS OR IMPLIED, INCLUDING THE IMPLIED WARRANTIES OF MERCHANTABILITY OR FITNESS FOR A PARTICULAR PURPOSE.

Some jurisdictions do not allow disclaimer of express or implied warranties in certain transactions, therefore this disclaimer may not apply to you.

**Availability:** All offers subject to availability. Lenovo reserves the right to alter product offerings and specifications at any time, without notice. Lenovo is not responsible for photographic or typographic errors.

**General:** Review key information provided by Microsoft that may apply to your system purchase, including details on Windows 10, Windows 8, Windows 7, and potential upgrades/downgrades. Lenovo makes no representation or warranty regarding third-party products or services.

**Trademarks:** Lenovo, ThinkPad, ThinkCentre, ThinkStation and the Lenovo logo are trademarks of Lenovo. Microsoft, Windows, Windows NT, and the Windows logo are trademarks of Microsoft Corporation. Ultrabook, Celeron, Celeron Inside, Core Inside, Intel, Intel Logo, Intel Atom, Intel Atom Inside, Intel Core, Intel Inside, Intel Inside Logo, Intel vPro, Itanium, Itanium Inside, Pentium, Pentium Inside, vPro Inside, Xeon, Xeon Phi, and Xeon Inside are trademarks of Intel Corporation in the U.S. and/or other countries. Other company, product or service names may be trademarks or service marks of others.

**Warranty:** For a copy of applicable warranties, write to: Lenovo Warranty Information, 1009 Think Place, Morrisville, NC, 27560. Lenovo makes no representation or warranty regarding third party products or services. The Lenovo Limited Warranty applies only to Lenovo hardware products purchased for your own use, and does not transfer upon resale.

**Limited warranty:** Support unrelated to a warranty issue may be subject to additional charges.

#### **Lenovo Services:**

**Carry-in or Mail-in Service:** Parts and labor repair coverage where the customer is responsible for shipping (including packaging) or delivery to authorized warranty provider or repair center.

**Depot or Courier Service:** Parts and labor repair coverage where shipping (including packaging) or delivery to the repair center is paid for by Lenovo.

**Expedited Depot:** Parts and labor coverage with expedited turnaround. Shipping (including packaging) or delivery to the repair center is paid for by Lenovo.

**Onsite / In-home Service:** Parts and labor repair coverage where labor is provided onsite at your place of business.

If Lenovo determines your product problem is covered by the product warranty and cannot be resolved over the telephone, a technician will be dispatched to arrive onsite, typically the next day.

**International Warranty Service (IWS):** PC repair coverage for customers who require a critical warranty repair while travelling internationally. Visit [www.lenovo.com/internationalwarranty](http://www.lenovo.com/internationalwarranty) for details. Visit [www.lenovo.com/warranty](http://www.lenovo.com/warranty) for Lenovo Warranty Services terms and conditions for complete details and restrictions.

**Included software:** may differ from its retail version (if available), and may not include user manuals or all program functionality. Software license agreements may apply.

**Battery life:** Battery life (and recharge times) will vary based on many factors including screen brightness, applications, features, power management, battery conditioning, and other customer preferences.

Visit <http://psref.lenovo.com/> for the latest version of Product Specifications Reference.

© Lenovo, 2018. All rights reserved.  
Lenovo 1009 Think Place Morrisville, NC 27560 U.S.A.