

# ideapad S530

## MORE THAN THE SUM OF ITS PARTS.

Speed, performance, and security. The Lenovo™ **IdeaPad™** S530 gives you all of this and more. Designed for both productivity and downtime, this sleek, light laptop boasts Harman® speakers, Dolby Audio™, and a 13" near-edgeless FHD display. It also has up to an 8-hour battery life that recharges quickly. You can configure it, too—with discrete graphics, secure fingerprint reader, and a backlit keyboard.

### WHY YOU SHOULD BUY THE LENOVO IDEAPAD S530



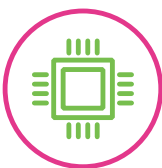
#### Superb surround sound

The **IdeaPad S530** comes with premium Harman® speakers optimized with Dolby Audio™ as standard. Delivering a sound that's always crisp and clear, it means that you can enjoy your music, movies, and TV shows to the full wherever you go.



#### More screen, less bezel

The 13.3" FHD display shows everything in vibrant detail—and from different angles, too. Your viewing experience is enhanced by up to 72% color gamut, and very thin bezels on three sides of the screen (only 6.25 mm, on the left and right; and 8.52 mm, across the top), creating a near edgeless display.



#### It's the little things that matter

From the seamless power of up to Intel® Core™ i7 processing to the soft-touch keyboard and touchpad, the **IdeaPad S530** is engineered to help you achieve more, more quickly. It's also surprisingly light and thin—just 1.25 kg, enabling you to work, rest, or play from anywhere.



#### Password? It's on the tip of your finger

With the optional fingerprint reader, you can log into your **IdeaPad S530** safely and quickly with your finger. As well as being faster than typing a password, you can rest easy as all your personal information is wrapped in three layers of encrypted security.



Lenovo™



[WWW.LENOVO.COM](http://WWW.LENOVO.COM)



# ideapad S530

## SPECIFICATIONS

Lenovo IdeaPad S530-13IWL\*

### PERFORMANCE

#### Processor

Intel® 13<sup>th</sup>: Whiskey lake  
8<sup>th</sup> Generation Intel® Core™ i7 8565U  
8<sup>th</sup> Generation Intel® Core™ i5 8265U  
8<sup>th</sup> Generation Intel® Core™ i3 8145U

#### Operating System

Windows 10 Home

#### Graphics

NVIDIA® GeForce® MX 150  
Intel® Integrated

#### Memory

LPDDR3 : 4 GB / 8 GB / 16 GB

#### Storage

PCIe SSD : 128 GB / 256 GB / 512 GB

#### Audio

Harman® Speakers with Dolby Audio™

#### Battery<sup>1</sup>

Up to 8 Hours; Rapid Charge<sup>2</sup>

### DESIGN

#### Display

13.3" FHD (1920 x 1080) IPS  
(Optional Glass Display)  
6.25 mm l/r bezel; 8.52 mm top bezel

#### Dimensions (W x D x H)

(mm) : 308.3 x 211 x 14.8  
(inches) : 12.14" x 8.31" x 0.58"

#### Weight

Starting at 2.75 lbs (1.25 kg)

#### Optional Features

Backlit Keyboard  
Fingerprint Reader

#### Wow Features

Cortana  
Glass 'Comfort Touch' Touchpad  
Glass Display<sup>3</sup>

#### Colors

Onyx Black  
Mineral Grey  
Liquid Blue  
Copper

### CONNECTIVITY

#### WLAN

1 x 1 WiFi 802.11 ac  
2 x 2 WiFi 802.11 ac  
2 x 2 MU-MIMO

#### Bluetooth®

Bluetooth® 4.1/5.0

#### Connectors

2 x USB 3.0  
1 x USB Type-C™ (USB 3.1 + DisplayPort™)  
HDMI™  
Audio Jack

### PRELOADED SOFTWARE

- McAfee LiveSafe™<sup>4</sup>
- Lenovo Vantage<sup>4</sup>
- Microsoft Office Centennial<sup>5</sup>
- Microsoft Office JP<sup>6</sup>
- Lenovo PC Manager<sup>7</sup>
- Lenovo Antivirus Plus<sup>7</sup>
- Lenovo App Explorer<sup>4</sup>
- LinkedIn<sup>8</sup>
- Lenovo Utility<sup>8</sup>

<sup>1</sup> All battery life claims are approximate and based on test results using the MobileMark® 2014 ver 1.5 battery life benchmark test. Actual results will vary, and depend on numerous factors including product configuration and usage, software, operating conditions, wireless functionality, power management settings, screen brightness and other factors. The maximum capacity of the battery will naturally decrease with time and usage. See <https://bapccom.com/products/mobilemark-2014/> for additional details.

<sup>2</sup> Power-off mode; requires 65W power source.

<sup>3</sup> Optional.

<sup>4</sup> ROW.

<sup>5</sup> Worldwide (WW) except Japan

<sup>6</sup> Japan only.

<sup>7</sup> China only.

<sup>8</sup> Worldwide (WW).



## LENOVO SERVICES

### Warranty Upgrades - On-site / In-Home Service

Maximizes PC uptime and productivity by providing convenient, fast repair services in your own home.

### Accidental Damage Protection

Avoid the hassles of unexpected repair costs. Provides coverage for non-warranted damage incurred under normal operating conditions, such as minor spills, drops or damage to the integrated screen.

### Warranty Extensions (1-to-3 Years Total Duration)

This fixed-term, fixed-cost service helps accurately budget for PC expenses, protect your valuable investment and potentially lower the cost of ownership over time.

\* Example of Lenovo IdeaPad catalogue naming convention



### Intel® platform codes

Apollo Lake: IAP, Broadwell: IBD, Braswell: IBR, Broadwell: IBW, Baytrail: IBY, Cannonlake: ICN, Haswell: IHH, Kabylake: IKB, Skylake H: ISH, Skylake: ISK, Skylake U: ISU, Skylake Y: ISY, Skylake Z: ISZ, Gemini Lake: IGM, Whiskey Lake: IWL

## OPTIONS & ACCESSORIES



Lenovo 13" Laptop  
Leather Sleeve



Lenovo 15.6" Laptop  
Urban Backpack



Lenovo 510  
Wireless Mouse



WWW.LENOVO.COM

Lenovo reserves the right to alter product offerings and specifications at any time, without notice. Lenovo makes every effort to ensure accuracy of all information but is not liable or responsible for any editorial, photographic or typographic errors. All images are for illustration purposes only. For full Lenovo product, service and warranty specifications visit [www.lenovo.com](http://www.lenovo.com). Lenovo makes no representations or warranties regarding third party products or services. **Trademarks:** The following are trademarks or registered trademarks of Lenovo: Lenovo, the Lenovo logo, IdeaPad, IdeaCentre, Microsoft, Windows and Vista are registered trademarks of Microsoft Corporation. Ultrabook, Celeron, Celeron Inside, Core Inside, Intel, Intel Logo, Intel Atom, Intel Atom Inside, Intel Core, Intel Inside, Intel Inside Logo, Intel vPro, Itanium, Itanium Inside, Pentium, Pentium Inside, vPro Inside, Xeon, Xeon Phi, and Xeon Inside are trademarks of Intel Corporation in the U.S. and/or other countries. Other company, product and service names may be trademarks or service marks of others. Visit [www.lenovo.com/lenovo/us/en/safecom/](http://www.lenovo.com/lenovo/us/en/safecom/) periodically for the latest information on safe and effective computing. ©2018 Lenovo. All rights reserved.



Lenovo™