

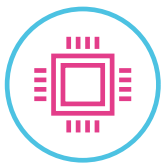
ideacentre AIO 330

SIMPLE. FUNCTIONAL. STYLISH.

EVERYTHING YOU NEED IS RIGHT OUT-OF-THE-BOX

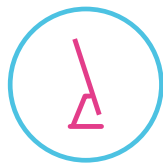
Lenovo™ IdeaCentre™ All-in-One 330 is the very definition of simplicity and stylish. At the same time, enjoy the processing power by Intel® Celeron® or Pentium®; tackle all your daily needs with stability. Plus, groundbreaking fanless design provides you with a tranquil environment to work and play. This family-friendly AIO works the way you want to.

WHY YOU SHOULD BUY THE LENOVO IDEACENTRE AIO 330



Tackle all your daily needs

This Intel®-powered AIO 330 is built to deliver reliable performance out-of-the-box —and for years to come. Multitask with ease, with one of our two powerful processor options: Celeron® or Pentium®.



Redesigned to slim and sleek

IdeaCentre AIO 330 was redesigned with a smooth curved body and sleek steel stand. This Avant-Garde profile is a perfect accent for your home's workspace — and it's available in White and Black.



Lenovo™



Groundbreaking Fanless thermal design

We replaced the fan with advanced cold plates to efficiently lower machine temperatures and provide you with a tranquil environment to work and play.



Windows 10 efficiency

IdeaCentre AIO 330 brings you the ease of Windows 10 Home. Surf online with Microsoft Edge, video chat with your friends over Skype, or ask Cortana to find you a recipe online. Windows 10 provides you a host of multiple applications to increase your productivity.



WWW.LENOVO.COM



ideacentre AIO 330

SPECIFICATIONS

Lenovo IdeaCentre AIO 330-20IGM*

PERFORMANCE

Processor

Intel® Pentium® J5005 Gemini Lake Processor
(1.5 GHz, Quad-Core, 10W)

Intel® Celeron® J4105 Gemini Lake Processor
(1.5 GHz, Quad-Core, 10W)

Intel® Celeron® J4005 Gemini Lake Processor
(2.0 GHz, Dual-Core, 10W)

Operating System

Windows 10 Home

Graphics

Integrated Graphics

Webcam

720p

Memory

4 GB DDR4

8 GB DDR4

Storage

500 GB SATA3 HDD

1 TB SATA3 HDD

Audio

2 x 2W

* ROW only.

DESIGN

Display

19.5" HD (1440 x 900) 250 nits

19.5W LED Backlight LCD WVA 16:10

Dimensions (W x L x H)

(mm) : 460.6 x 224.5 x 394.9

(inches): 18.13" x 8.84" x 15.55"

Weight

Starting at 8.6 lbs (3.9 kg)

Colors

Black

White

CONNECTIVITY

WLAN & Bluetooth®

1 x 1 WiFi 802.11 ac /

Bluetooth® 4.0 Combo with WiFi Card

Rear Ports

1 x USB 3.0

2 x USB 2.0

10/100/1000 LAN

Power DC Jack

HDMI™-Out

Bottom Ports

3-in-1 Card Reader (SD, SDHC, SDXC)

Microphone/Earphone

PRELOADED SOFTWARE

- Lenovo Companion*
- Lenovo Settings
- Lenovo Rescue System 9.0
- PowerDVD / Power2Go*
- User Guide
- Microsoft Office 2016
- OOBE Update
- McAfee® LiveSafe™
- CCSDK 3.0
- Lenovo App Explorer (LAE)
- Lenovo ID



LENOVO SERVICES

Warranty Upgrades - On-site / In-Home Service

Maximizes PC uptime and productivity by providing convenient, fast repair services in your own home.

Accidental Damage Protection

Avoid the hassles of unexpected repair costs. Provides coverage for non-warranted damage incurred under normal operating conditions, such as minor spills, drops or damage to the integrated screen.

Warranty Extensions (1-to-3 Years Total Duration)

This fixed-term, fixed-cost service helps accurately budget for PC expenses, protect your valuable investment and potentially lower the cost of ownership over time.

OPTIONS & ACCESSORIES



Lenovo 500
Multimedia
Controller



F310S USB 3.0
External Backup
Hard Drive

* Example of Lenovo IdeaCentre AIO catalogue naming convention



Intel® platform codes

Apollo Lake: IAP, Broadwell: IBD, Braswell: IBR, Broadwell: IBW, Baytrail: IBY, Cannonlake: ICN, Haswell: IHH, Kabylake: IKB, Skylake H: ISH, Skylake: ISK, Skylake U: ISU, Skylake Y: ISY, Skylake Z: ISZ



WWW.LENOVO.COM

Lenovo reserves the right to alter product offerings and specifications at any time, without notice. Lenovo makes every effort to ensure accuracy of all information but is not liable or responsible for any editorial, photographic or typographic errors. All images are for illustration purposes only. For full Lenovo product, service and warranty specifications visit www.lenovo.com. Lenovo makes no representations or warranties regarding third party products or services. **Trademarks:** The following are trademarks or registered trademarks of Lenovo: Lenovo, the Lenovo logo, ideapad, IdeaCentre, yoga and yoga home. Microsoft, Windows and Vista are registered trademarks of Microsoft Corporation. Ultrabook, Celeron, Celeron Inside, Core Inside, Intel, Intel Logo, Intel Atom, Intel Atom Inside, Intel Core, Intel Inside, Intel Inside Logo, Intel vPro, Itanium, Itanium Inside, Pentium, Pentium Inside, vPro Inside, Xeon, Xeon Phi, and Xeon Inside are trademarks of Intel Corporation in the U.S. and/or other countries. Other company, product and service names may be trademarks or service marks of others. Visit www.lenovo.com/lenovo/us/en/safecomp/ periodically for the latest information on safe and effective computing. ©2017 Lenovo. All rights reserved.



Lenovo™