

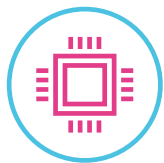
ideacentre AIO 520 (27)

24/7 EXCELLENCE

SHOWCASE YOUR DESKTOP

Bring a premium look to your home with the Lenovo™ IdeaCentre™ AIO 520: a slim desktop with a 27" display. Its sleek design is appropriate for any room, and you'll marvel at its exceptional performance. It's yours to tackle every task - from creating a budget spreadsheet to streaming your favorite movies.

WHY YOU SHOULD BUY THE LENOVO™ IDEACENTRE™ AIO 520



The Latest 7th Generation Intel® Core™ i7 Processor and Intel® Optane™ Memory

Experience the advanced performance of a 7th Generation Intel® Core™ processor. We've paired that with revolutionary Intel® Optane™ memory¹ - an adaptable system accelerator made specifically for your new 7th Generation Intel® Core™ system.



Crystal-Clear Resolution

Quad-HD (2560 x 1440) near-edgeless display lets you watch home videos in startling clarity. And with a 10-point multitouch display, it's even easier to scroll through footage, pause, and zoom-in on the best clips.



Lenovo™



Windows Mixed Reality

Virtual Reality? Try Mixed Reality. Get ready for amazing experiences that draw elements of your surroundings into a virtual world. Windows Mixed Reality brings you immersive games and stunning 360° content. Simply plug-in your Lenovo Explorer Immersive Headset and step into a new world.



Long-range Windows Cortana

Your own voice-activated digital assistant, ready to perform spoken tasks. With our far-field microphones, Cortana can hear you from up to four meters away.



¹ Optional configuration.



WWW.LENOVO.COM



ideacentre AIO 520 (27)

SPECIFICATIONS

Lenovo IdeaCentre AIO 520-27IKL*

PERFORMANCE

Processor

7th Generation Intel® Core™ i7-7700T Processor (2.9 GHz, Quad-Core, 35W)

7th Generation Intel® Core™ i5-7400T Processor (2.4 GHz, Quad-Core, 35W)

7th Generation Intel® Core™ i3-7100T Processor (3.4 GHz, Dual-Core, 35W)

7th Generation Intel® Pentium® G4560T Processor (2.9 GHz, Dual-Core, 35W)

Operating System

Windows 10 Home

Graphics

NVIDIA® GeForce® 940MX; 2 GB

Memory

Up to 16 GB DDR4

Storage

Up to 256 GB PCIe SSD / 16 GB Intel® Optane™ Memory and 2 TB HDD Storage*

DESIGN

Display

Touch

27" QHD (2560 x 1440) 16:9, 250-nits WVA LED Backlight LCD, Near-borderless 10-point Multitouch Display

Non-Touch

27" QHD (2560 x 1440) 16:9, 250-nits WVA LED Backlight LCD, Anti-Glare, Near-borderless Display

Dimensions (W x L x H)

Touch

(mm) : 624.35 x 479.4 x 68

(inches) : 24.58" x 18.87" x 2.68"

Non-Touch

(mm) : 615 x 474.7 x 64

(inches) : 24.21" x 18.69" x 2.52"

Weight

Touch : Starting at 23.15 lbs (10.5 kg)

Non-Touch : Starting at 19.5 lbs (8.83 kg)

Colors

Dark Silver

Warm Silver

CONNECTIVITY

WLAN & Bluetooth®

1 x 1 WiFi 802.11 ac / Bluetooth® 4.0 Combo with WiFi Card

Rear Ports

2 x USB 2.0

1 x USB 3.0

1 x USB 3.0 Type-C™

10/100/1000 LAN

Power DC Jack

HDMI™-In

HDMI™-Out

Side Ports

1 x USB 3.0

Bottom Ports

3-in-1 Card Reader (SD, SDHC, SDXC)

Microphone/Earphone Combo

PRELOADED SOFTWARE

- Lenovo Companion 3.0
- Lenovo Settings
- Lenovo App Explorer
- Lenovo Family Cloud
- User Guide
- Lenovo ID
- OOBE Update
- McAfee® LiveSafe™
- Lenovo Rescue System 9.0
- Microsoft Office 2016

* Optional.



Lenovo™

LENOVO SERVICES

Warranty Upgrades - On-site / In-Home Service

Maximizes PC uptime and productivity by providing convenient, fast repair services in your own home.

Accidental Damage Protection

Avoid the hassles of unexpected repair costs. Provides coverage for non-warranted damage incurred under normal operating conditions, such as minor spills, drops or damage to the integrated screen.

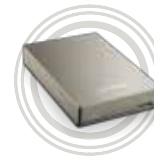
Warranty Extensions (1-to-3 Years Total Duration)

This fixed-term, fixed-cost service helps accurately budget for PC expenses, protect your valuable investment and potentially lower the cost of ownership over time.

OPTIONS & ACCESSORIES



Lenovo Explorer Immersive Headset



Lenovo UHD F309 USB 3.0 2 TB



Lenovo 510 Wireless Combo Keyboard & Mouse

* Example of Lenovo IdeaCentre AIO catalogue naming convention



Intel® platform codes

Haswell H81: IHH, BroadWell U: IBU, Skylake Z170: ISZ, Skylake B150: ISB, Skylake H110/H170: ISH, Skylake U: ISU, Apollo Lake: IAP, Kabylake H110: IKH



WWW.LENOVO.COM

Lenovo reserves the right to alter product offerings and specifications at any time, without notice. Lenovo makes every effort to ensure accuracy of all information but is not liable or responsible for any editorial, photographic or typographic errors. All images are for illustration purposes only. For full Lenovo product, service and warranty specifications visit www.lenovo.com. Lenovo makes no representations or warranties regarding third party products or services. **Trademarks:** The following are trademarks or registered trademarks of Lenovo: Lenovo, the Lenovo logo, ideapad, IdeaCentre, yoga and yoga home. Microsoft, Windows and Vista are registered trademarks of Microsoft Corporation. Ultrabook, Celeron, Celeron Inside, Core Inside, Intel, Intel Logo, Intel Atom, Intel Atom Inside, Intel Core, Intel Inside, Intel Inside Logo, Intel vPro, Itanium, Itanium Inside, Pentium, Pentium Inside, vPro Inside, Xeon, Xeon Phi, and Xeon Inside are trademarks of Intel Corporation in the U.S. and/or other countries. Other company, product and service names may be trademarks or service marks of others. Visit www.lenovo.com/lenovo/us/en/safecomp/ periodically for the latest information on safe and effective computing. ©2017 Lenovo. All rights reserved.

