

YOGA Slim 7i Pro (14", 7)

Accelerate everything you do.

Master multitasking and create constantly with the Lenovo Yoga Slim 7i Pro. This stylish 14" ultra-slim laptop is packed with power – delivering superior performance where you need it most* with 12th Generation Intel® Core™ processors and up to NVIDIA® GeForce RTX™ 2050 graphics. Up to a stunning 2.8K QHD+ 90Hz OLED, as well as its long-lasting battery life, and a range of smart features make this laptop your everyday, anywhere machine.

WHY YOU SHOULD BUY THE LENOVO YOGA SLIM 7i PRO (14", 7)



Engineered to perform

Delivering superior performance where you need it most*, the Yoga Slim 7i Pro is powered by up to 12th Generation Intel® Core™ processors, and up to 16 GB RAM, and up to 1 TB SSD PCIe M.2 storage, for a revolutionary leap into real-world hybrid performance. Save time, boost performance, edit 4K video seamlessly, and run all the applications you need. Up to the new incorporated NVIDIA® GeForce RTX™ 2050 graphics card fuels this laptop to previously untested heights.



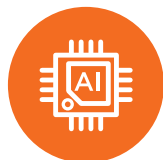
Sleek, slim, staggering

The Yoga Slim 7i Pro's Cloud Grey and Storm Grey premium aluminum designs are crafted for creators working in any setting. The color matching keyboard upgrade gives a graceful uniformity to the color scheme, while its new soft touch keyboard enables an easier and effortless typing experience. Features like the raised camera notch offer quality of life upgrades to support easy one-handed opening so that you get moving faster than ever.



Entertainment anywhere

Enjoy stunning clarity with the up-to-14" 2.8K QHD+ OLED display featuring a 16:10 aspect ratio for taller, optimized viewing. Thanks to 100% sRGB color spectrum and Dolby Vision®, visuals will appear in spectacular color, brightness, contrast, and detail while a 90Hz refresh rate ensures your screen never lags. Combined with the powerful sound of Dolby Atmos® optimized stereo speakers, the Yoga Slim 7i Pro delivers powerful entertainment anywhere.



Beautifully smart & secure

Powered by our AI Engine+, your Yoga is now a much smarter PC: more secure, fluid and fast, and crucially, more intuitive – knowing what you need before you do and responding in real time. With Adaptive Performance, accelerate performance or enhance battery life and acoustics while keeping your connection stable. With Intelligent Sense, get immediate secure access, sharpen up your resolution and visuals, issue voice and gesture commands, minimize ambient noise, and more. And with Integrated Security, your device is more secure and protected than ever before.



* Superior performance as compared with previous generation.

YOGA Slim 7i Pro (14", 7)

SPECIFICATIONS

Yoga Slim 7 Pro 14IAH7 | Yoga Slim 7 Pro 14IAP7*

PERFORMANCE

Processor

Intel® Core™ i7-12700H (2.3 GHz, 14 Cores, 24M Cache)
Intel® Core™ i5-12500H (2.5 GHz, 12 Cores, 18M Cache)
Intel® Core™ i7-1260P (2.1 GHz, 12 Cores, 18M Cache)
Intel® Core™ i5-1240P (1.7 GHz, 12 Cores, 12M Cache)

Operating System

Windows 11

Graphics

DIS : NVIDIA® GeForce RTX™ 2050
DIS : NVIDIA® GeForce® MX550
UMA : Intel® Iris® X⁶

Memory

8 GB / 16 GB; 4800 MHz, Dual Channel

Storage

SSD PCIe M.2 : 512 GB / 1 TB

Camera & Microphone

FHD Webcam
IR Camera
Dual Microphones

Audio

2 x 2W Speakers
Dolby Atmos® Audio

Battery¹ (61 WHr)

MobileMark® 2018 : Up to 11.13 Hours
Local Video Playback : Up to 17.83 Hours
Rapid Charge Boost : 15 min. / 2 Hours Usage²
Rapid Charge Express : 15 min. / 3 Hours Usage³



With Lenovo
AI Engine+



DESIGN

Display

14" 2.8K (2880 x 1800) OLED, 16:10,
100% DCI-P3, 400 nits, 91% AAR, 243 PPI,
Dolby Vision®, Glass, 90Hz
14" 2.8K (2880 x 1800) IPS, 16:10,
100% sRGB, 400 nits, 91% AAR, 243 PPI,
Dolby Vision®, Mylar, 120Hz
14" 2.8K (2880 x 1800) IPS, 16:10,
100% sRGB, 400 nits, 91% AAR, 243 PPI,
Dolby Vision®, Mylar, 90Hz
14" 2.2K (2240 x 1400) IPS, 16:10,
100% sRGB, 300 nits, 91% AAR, 189 PPI,
Dolby Vision®, Mylar, 60Hz

Dimensions (W x D x H)

(mm) : 312.4 x 221.4 x as thin as 14.6
(inches) : 12.3" x 8.7" x as thin as 0.57"

Weight

LCD
Mylar + UMA : Around 1.32 kg (2.91 lbs)
Mylar + DIS : Around 1.36 kg (2.99 lbs)
Glass + UMA : Around 1.40 kg (3.09 lbs)

OLED

Starting at 1.39 kg (3.06 lbs)

Hinge

180°

Colors

Cloud Grey
Storm Grey

CONNECTIVITY

WLAN

WiFi 6
WiFi 6E

Bluetooth®

Bluetooth® 5.1

Input/Output (I/O) Ports

2 x USB Thunderbolt™ 4.0 Type-C™
1 x USB 3.2 Gen 1 Type-A
1 x Audio Combo Jack

PRELOADED SOFTWARE

- Windows 11 Home/Pro
- Lenovo Vantage
- Microsoft Office 2021
- McAfee® LiveSafe™
- Amazon Alexa⁵
- Dolby® Access (Dolby Vision®⁶ and Atmos®)

¹ All battery life claims are approximate and based on two methods of testing: MobileMark® 2014 battery life benchmark and continuous 1080p video playback on the latest update of Windows 10 (with 150 nits brightness and default volume level). Actual battery life will vary and depends on many factors such as product configuration and usage, software use, wireless functionality, power management settings, and screen brightness. The maximum capacity of the battery will decrease with time and use.

² OLED SKU IAP platform.

³ 2.2K/2.8K panel IAP & IAH / OLED SKU IAH platform.

⁴ The actual transfer speed of the USB 3.2 will vary and, depending on many factors, such as the processing capability of host and peripheral devices, file attributes and other factors related to system configuration and your operating environments, will be slower than a speed of 20 Gbit/s.

⁵ Available in select regions.

⁶ Optional.

LENOVO SERVICES

Lenovo Premium Care Plus

The ultimate PC support experience, with you as our 24/7 priority. Enjoy personalized hardware and software support from a global network of elite technicians, along with extensive solutions that protect your PC from accidental damage, battery degradation, and ensures optimized PC performance and security.

Lenovo Smart Performance

Smart Performance Services within Lenovo Vantage will keep your system running at optimum performance and proactively fix issues that affect PC performance, internet performance, remove malware, and improve device security.

Lenovo Accidental Damage Protection

Avoid the hassles of unexpected damage & repair costs. With coverage for drops, spills, electric surges, and broken LCD screens, accidental damage protection makes it easy to repair to your PCs and ensures your device is up and running fast.

Lenovo Smart Privacy Services

Smart Privacy Services within Lenovo Vantage puts you in control of your privacy with an intelligent software that makes your browsing experience more private by blocking third-party web trackers, secures your online accounts, encrypts your WiFi connection, monitors your information for exposure in organizational data breaches, and removes your profiled data from select sites found on the internet.

Lenovo Sealed Battery Warranty

Long-lasting battery life is not just a feature but a necessity to help you stay productive and connected all day long. Protect your PC's sealed battery from degradation, enjoy hassle-free battery replacement service, and safeguard your PC from future battery failure with our Sealed Battery Warranty Service.

Lenovo Warranty Extensions (Up to 3 Years Duration)

Gain complete peace of mind by extending your base warranty to up to 3 years and minimize unexpected repair costs.

LENOVO CO₂ OFFSET SERVICES

Now give back to the environment in a tangible way! Lenovo CO₂ Offset Service gives you a simple and transparent way to offset carbon emissions and help the environment by supporting one of several United Nations Climate Action projects, including those that help to improve renewable energy, reduce air pollution, or enhance safe waste disposal, all of this at just the click of a button.

WWW.LENOVO.COM

Lenovo reserves the right to alter product offerings and specifications at any time, without notice. Lenovo makes every effort to ensure accuracy of all information but is not liable or responsible for any editorial, photographic or typographic errors. All images are for illustration purposes only. For full Lenovo product, service and warranty specifications visit www.lenovo.com. Lenovo makes no representations or warranties regarding third party products or services. **Trademarks:** The following are trademarks or registered trademarks of Lenovo: Lenovo, the Lenovo logo, ideapad, ideacentre, yoga and yoga home. Microsoft, Windows and Vista are registered trademarks of Microsoft Corporation. Ultrabook, Celeron, Celeron Inside, Core Inside, Intel, Intel Logo, Intel Atom, Intel Atom Inside, Intel Core, Intel Inside, Intel Inside Logo, Intel vPro, Itanium, Itanium Inside, Pentium, Pentium Inside, vPro Inside, Xeon, Xeon Phi and Xeon Inside are trademarks of Intel Corporation in the U.S. and/or other countries. Other company, product and service names may be trademarks or service marks of others. Battery life (and recharge times) will vary based on many factors including system settings and usage. Visit www.lenovo.com/lenovo/us/en/safecomp/ periodically for the latest information on safe and effective computing. ©2022 Lenovo. All rights reserved.

OPTIONS & ACCESSORIES



Lenovo Yoga Mouse with Laser Presenter



Lenovo 510 FHD Webcam



Lenovo Urban Sleeve Case

McAfee® LiveSafe™*

Register McAfee® to enjoy these benefits in your FREE 30-day trial.

- Award-winning Antivirus
- Password Manager
- Safe Web Browsing
- Multi-device Compatibility
- Identity Theft Protection
- Free Customer Support

* Not available in Russia & China.

*Example of Lenovo marketing naming convention



Intel® platform codes

Broadwell: **IBD**, Braswell: **IBR**, Broadwell: **IBW**, Baytrail: **IBY**, Cannonlake: **ICN**, Haswell: **IHH**, Kabylake: **IKB**, Skylake H: **ISH**, Skylake U: **ISU**, Skylake Y: **ISY**, Skylake Z: **ISZ**, Gemini Lake: **IGM**, Whiskey Lake: **IWL**, Icelake: **IIL**, Gemini Lake: **IGL**, Comet Lake: **IML**, Tiger Lake: **ITL**, Alder Lake: **IAP**, Alder Lake: **IAH**, Alder Lake: **IAL**.



Lenovo