

# YOGA 6 (13", 8)

## Shape your creativity.

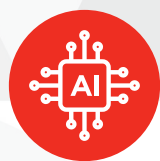
With its thin, light frame and rounded comfort edges, the Yoga 6 is easily portable and comfortable to use. Combine ergonomics and aesthetics with our commitment to sustainability and you've got the perfect on-the-go device for taking anywhere you want.

### Why you should buy the Lenovo Yoga 6 (13", 8)



#### Catch up to your own inspirations

Inspiration waits for no one, so pack the power to get the job done with the Yoga 6 Gen 8 laptop. Powered by the AMD Ryzen™ 7000 Series Processor and enhanced battery life, you can do more in less time with all-day battery and rapid charge for a quick boost.



#### A whole lot of smart in a small package

Built for today, the Yoga 6 Gen 8 with Lenovo AI Engine+ laptop is packed with smart features. An FHD webcam with privacy shutter offers quick and secure facial recognition, while additional ports like HDMI and an MicroSD Card reader help clear up the clutter and keep you dongle-free.



#### Make it cinematic

Dolby Vision® and Dolby Atmos® sound technologies come together on the Yoga 6 Gen 8 laptop to surround you in a fully cinematic space. Get lost in the 16:10 FHD display packed with rich accurate colors and crisp vibrant visuals, all while front-facing speakers deliver encompassing sound.



#### Curved comfort, deliberative design

Thanks to elegantly curved edges and a thin, light frame, carrying around the Yoga 6 Gen 8 laptop is a breeze. The ENERGY STAR® and EPEAT™ Gold-registered PC features a top cover made with 100% PCC fabric or recycled aluminum, and conscientiously sourced, greater than 99% biodegradable packaging help affirm you've made an environmentally friendly choice.



# YOGA 6 (13", 8)

## SPECIFICATIONS

Yoga 6 13ABR8\*

### PERFORMANCE

#### Processor

AMD Ryzen™ 7 7730U  
AMD Ryzen™ 5 7530U

#### Operating System

Windows 11 Home  
Windows 11 Pro

#### Graphics

UMA : AMD Radeon™ Graphics

#### Memory

LPDDR4x : 8 GB / 16 GB Dual Channel; 4266 MHz

#### Storage

TLC PCIe Gen 4 M.2 SSD 2242 (TBC)  
256 GB / 512 GB / 1 TB

#### Camera

1080p FHD IR Hybrid Webcam with Privacy Shutter

#### Audio

2 x 2W Front-facing Speakers Optimized by Dolby Atmos®

#### Battery<sup>1</sup>

FHD+ (59Whr)

MobileMark® 2018 : Up to 12.5 Hours

Local Video Playback : Up to 17.0 Hours

Rapid Charge : Support Rapid Charge



With Lenovo AI Engine+

## LENOVO SERVICES

#### Lenovo Premium Care Plus

Lenovo Premium Care Plus is the ultimate PC support experience with you as our priority 24/7. Enjoy personalized hardware and software support from a global network of elite technicians, along with accidental damage protection, fast repairs with onsite support, extended battery warranty, data migration assistance, and smart performance solutions that optimize PC performance and security.

#### Lenovo Smart Performance

Smart Performance Services within Lenovo Vantage will keep your system running at optimum performance and proactively fix issues that affect PC performance, internet performance, remove malware, and improve device security.

#### Lenovo Accidental Damage Protection

Avoid the hassles of unexpected damage & repair costs. With coverage for drops, spills, electric surges, and broken LCD screens, accidental damage protection makes it easy to repair to your PCs and ensures your device is up and running fast.

#### Lenovo CO<sub>2</sub> Offset Services

Offset the carbon emissions of your PC with Lenovo CO<sub>2</sub> Offset Services - an easy and transparent solution to offset emissions across the average lifecycle of your device. These offsets are invested in UN-approved initiatives like renewable energy or ecological projects, thus contributing towards a more sustainable future.

#### Lenovo Sealed Battery Warranty

Long-lasting battery life is not just a feature but a necessity to help you stay productive and connected all day long. Protect your PC's sealed battery from degradation, enjoy hassle-free battery replacement service, and safeguard your PC from future battery failure with our Sealed Battery Warranty Service.

#### Lenovo Warranty Extensions (Up to 3 Years Duration)

Gain complete peace of mind by extending your base warranty to up to 3 years and minimize unexpected repair costs.

### DESIGN

#### Display

13.3" FHD+ (1920 x 1200) IPS, 300 nits, 100% sRGB, 60 Hz, 16:10, Dolby Vision®, Touchscreen

#### 4-Side Narrow Bezel (>90% AAR)

Top : 6.74 mm

Left/Right : 2.8 mm

Bottom : 9.5 mm

#### Dimensions (W x D x H)<sup>2</sup>

##### Fabric Edition

(mm) : 304 x 218 x 17.36

(inches) : 11.96" x 8.58" x 0.68"

##### Metal Edition

(mm) : 304 x 218 x 17.45

(inches) : 11.96" x 8.58" x 0.69"

#### Weight

##### Fabric Edition

Starting from 1.39 kg (3.06 lbs)

##### Metal Edition

Starting from 1.37 kg (3.02 lbs)

#### Hinge

360°

#### Color

Dark Teal

### CONNECTIVITY

#### WLAN

2x2 WiFi 6 802.11 ax

#### Bluetooth<sup>3</sup>

Bluetooth® 5.1

#### Input/Output (I/O) Ports

##### Left

2 x USB-C (PD/DP/USB 3.2 Gen 1<sup>3</sup>)

1 x Audio Jack

1 x HDMI™ 2.1 (General Type)

##### Right

2 x USB-A (USB 3.2 Gen 1<sup>3</sup>)

1 x MicroSD Card Reader (UHS-1 (104) PCIe Gen 1)

### PRELOADED SOFTWARE

- Windows 11 Home/Pro
- Lenovo Vantage
- Microsoft Office 365 Trial
- McAfee® LiveSafe™
- Amazon Alexa<sup>4</sup>
- Dolby® Access (Dolby Vision® & Atmos®)

### NOTABLE MENTIONS

#### Standard

Fingerprint Reader

Stylus Pen

#### Optional

CO<sub>2</sub> Offset Service

<sup>1</sup> All battery life claims are approximate and based on two methods of testing: MobileMark® 2018 battery life benchmark and continuous 1080p video playback on the latest update of Windows 11 (with 150 nits brightness and default volume level). Actual battery life will vary and depends on many factors such as product configuration and usage, software use, wireless functionality, power management settings, and screen brightness. The maximum capacity of the battery will decrease with time and use.

<sup>2</sup> Height is calculated using T2 measurements and should be considered 'as thin as'.

<sup>3</sup> The actual transfer speed of the USB 3.2 will vary and, depending on many factors, such as the processing capability of host and peripheral devices, file attributes and other factors related to system configuration and your operating environments, may be slower than a speed of 20 Gbit/s.

<sup>4</sup> Available in select regions.

## OPTIONS & ACCESSORIES



Lenovo Yoga ANC Headphone



Lenovo Yoga Mouse with Laser Presenter



Lenovo 13-inch Laptop Urban Sleeve Case

## McAfee® LiveSafe™

Register McAfee® to enjoy these benefits in your FREE 30-day trial.

- Award-winning Antivirus
- Password Manager
- Safe Web Browsing
- Multi-device Compatibility
- Identity Theft Protection
- Free Customer Support

\* Example of Lenovo catalogue naming convention



#### AMD platform codes

Cezanne: ACN, Rembrandt: ARB, Warhol: AWA, Cezanne-H: ACH, Barcelo: ABA, Rembrandt-H: ARH, Matisse Refresh: AMR, Lucienne-U: ALC, Raphael BGA: ARX, Phoenix H: APH, Phoenix U: APU, Phoenix 2: AP2, Rembrandt+: ARP, Mendocino: AMN, Barcelo Refresh: ABR.

[WWW.LENOVO.COM](http://WWW.LENOVO.COM)

Lenovo reserves the right to alter product offerings and specifications at any time, without notice. Lenovo makes every effort to ensure accuracy of all information but is not liable or responsible for any editorial, photographic or typographic errors. All images are for illustration purposes only. For full Lenovo product, service and warranty specifications visit [www.lenovo.com](http://www.lenovo.com). Lenovo makes no representations or warranties regarding third party products or services. All rights reserved. **Trademarks:** AMD, the AMD Arrow logo, Ryzen, Radeon, FreeSync and combinations thereof, are trademarks of Advanced Micro Devices, Inc. Microsoft and Windows are registered trademarks of Microsoft Corporation in the United States and/or other countries. 3DMark is a registered trademark of Futuremark Corporation. Other names are for informational purposes only and may be trademarks of their respective owners. Other company, product and service names may be trademarks or service marks of others. Visit [www.lenovo.com/lenovo/us/en/safecomp/](http://www.lenovo.com/lenovo/us/en/safecomp/) periodically for the latest information on safe and effective computing. ©2022 Lenovo. All rights reserved.



Lenovo