

# Lenovo™ ThinkCentre M910x Tiny

## THINK BIG WITH A TINY DESKTOP

Smaller, more powerful and more versatile than a traditional desktop PC—ThinkCentre M910x Tiny raises the limits of desktop computing.

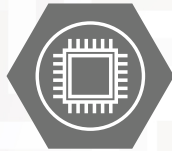
Built to handle every demanding task you can think of—the ultra-compact ThinkCentre M910x Tiny is packed with the latest technology found in full-sized desktops. Featuring the latest Intel® processors up to core i7 and DDR4 memory, this powerful 65w machine can start up, load files fast, and display rich content on up to 6 displays—so you can think big and multitask with ease. With optional PCIe SSD, you'll experience fast boot up times and open files faster than ever. What's more, this 'modular' powerhouse effortlessly sits in the rear of the display or anywhere you want with mounting options to improve your environment.

### WHY YOU SHOULD BUY THE LENOVO™ THINKCENTRE M910X TINY



#### Mount Tiny Anywhere

96% smaller than a traditional desktop tower, Tiny can mount anywhere to free up your space. Place it on a wall, behind a monitor or even a desk.



#### Packs a Punch

With the Intel® Core™ i7 processors on a powerful 65w machine, and DDR4 memory, you can carry out intensive tasks with speed and ease. Optional PCIe SSD enables powering up in a flash, load files even faster and avoid delays.



#### The Power to Transform

Create your own 'modular' all-in-one PC with ThinkCentre Tiny M910x housed in the back of a Tiny-inOne (TIO) display. Upgrade the display and Tiny separately to ensure more use from your assets over time.



#### Built Tough

MIL-SPEC tested, ThinkCentre Tiny are powerful desktops ready to handle even mission critical tasks. With optional dust shield which can reduce dust up to 40%, ThinkCentre Tiny stays reliable for longer.



### WHO NEEDS THE LENOVO™ THINKCENTRE M910X TINY IS BEST SUITED FOR?

- 1** Progressive IT decision makers who recognise technological performance as integral to empowering their business
- 2** Busy professionals requiring desktop-standard performance in a modular, portable device
- 3** Mobile multitaskers who appreciate the versatility of multiple screen support that enables them to keep track, create, present—relocate and go



[WWW.LENOVO.COM](http://WWW.LENOVO.COM)

Lenovo™

# Lenovo™ ThinkCentre M910x Tiny

## WHAT'S IN A THINKCENTRE® TINY



Lowest failure rates in the industry<sup>1</sup>



The highest % of recycled materials



Intelligent Cooling Engine (ICE)



Gold plated pins<sup>2</sup> for signal quality

## SPECIFICATIONS

### Lenovo™ ThinkCentre M910x Tiny

#### PERFORMANCE

##### Operating System

Windows 10 Pro

Windows 10 Pro downgrade Windows 7 (not available with 7<sup>th</sup> generation Intel® processor)

##### Processor

7<sup>th</sup> generation Intel® Core™ i7 vPro™, i5 vPro™, i3, Pentium, Celeron processor

6<sup>th</sup> generation Intel® Core™ i7 vPro™, i5 vPro™, i3, Pentium, Celeron processor

##### Storage

1 x 2.5" HDD/SSD

##### Memory

2 x DDR4 2400MHz SODIMM, Maximum 32 GB

##### Graphics

Up to Integrated Intel® graphics 630

Optional RX460 4 GB DDR5 (occupies 2.5" HDD bay)

##### Power

135W Adapter

##### Optical Device

Optional

#### SECURITY

TPM 2.0

#### CONNECTIVITY

##### Front I/O

2 x USB 3.1 Gen 1 (1 for fast charge)

2 x Audio (1 combo)

##### Rear I/O

4 x USB 3.1 Gen 1

2 x DP

Punch out:

For optional (1) DP/HDMI/Type-C\*/VGA/serial (2) serial

\*Note: Type-C port with USB and display function  
LAN

##### Wifi & Bluetooth\*

1 x 1 802.11 ac WLAN + Bluetooth® 4.0

2 x 2 802.11 ac WLAN + Bluetooth® 4.0

2 x 2 802.11 ac WLAN + Bluetooth® + vPro™

#### DESIGN

##### Lifecycle Stability

Intel® Stable Image Platform Program (SIPP) for at least 12 months

##### Multiple Display Support

Up to 3 displays

Up to 6 displays when RX460 graphic card is configured

##### Expansion

1 M.2. supports WiFi

2 M.2. for PCIe SSD or Intel® Optane™



## RECOMMENDED SERVICES

Lenovo offers a comprehensive portfolio of services to support and protect your investment. Succeed with substance and let Lenovo Service support you all the way.

##### PRIORITY TECHNICAL SUPPORT

Makes your priority, our priority. 24 x 7 priority call routing to advanced-level technicians, electronic incident tracking, and escalation management services.

##### WARRANTY UPGRADES—ON-SITE AND NEXT BUSINESS DAY

Maximizes PC uptime and productivity by providing convenient and fast repair service at your place of business.

##### WARRANTY EXTENSIONS (1-3 YEARS TOTAL DURATION)

This fixed-term, fixed-cost service helps accurately budget for PC expenses, protect your valuable investment, and lower the cost of ownership over time.

##### ACCIDENTAL DAMAGE PROTECTION

Avoid the hassles of unexpected repair costs. Provides coverage for non-warranted damage incurred under normal operating conditions, such as minor spills, drops, or damage to the integrated screen.

##### KEEP YOUR DRIVE

Retain your drive if it should happen to fail, giving you the peace of mind of knowing that your valuable data is secure.

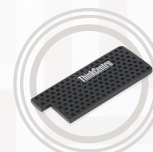
##### ASSET TAGGING

Systems come equipped with a professional, flexible asset tag based on your exact specifications. PCs are easily identifiable and trackable right out of the box.

## OPTIONS & ACCESSORIES



ThinkVision P27q



ThinkCentre Tiny IV 1L Dust Shield



ThinkCentre Tiny VESA Mount II

<sup>1</sup> TBR Large Enterprise Repair Rate Study 2011.

<sup>2</sup> CPU Socket is not included.



WWW.LENOVO.COM

Lenovo reserves the right to alter product offerings and specifications at any time, without notice. Lenovo makes every effort to ensure accuracy of all information but is not liable or responsible for any editorial, photographic or typographic errors. All images are for illustration purposes only. For full Lenovo product, service and warranty specifications visit [www.lenovo.com](http://www.lenovo.com). Lenovo makes no representations or warranties regarding third party products or services. **Trademarks:** The following are trademarks or registered trademarks of Lenovo: Lenovo, the Lenovo logo, ideapad, ideacentre, yoga and yoga home. Microsoft, Windows and Vista are registered trademarks of Microsoft Corporation. AMD, the AMD Arrow logo and combinations thereof are trademarks of Advanced Micro Devices, Inc. in the United States and/or other jurisdictions. Other company, product and service names may be trademarks or service marks of others. Battery life (and recharge times) will vary based on many factors including system settings and usage. Visit [www.lenovo.com/lenovo/us/en/safecomp/](http://www.lenovo.com/lenovo/us/en/safecomp/) periodically for the latest information on safe and effective computing. ©2017 Lenovo. All rights reserved.

Lenovo™