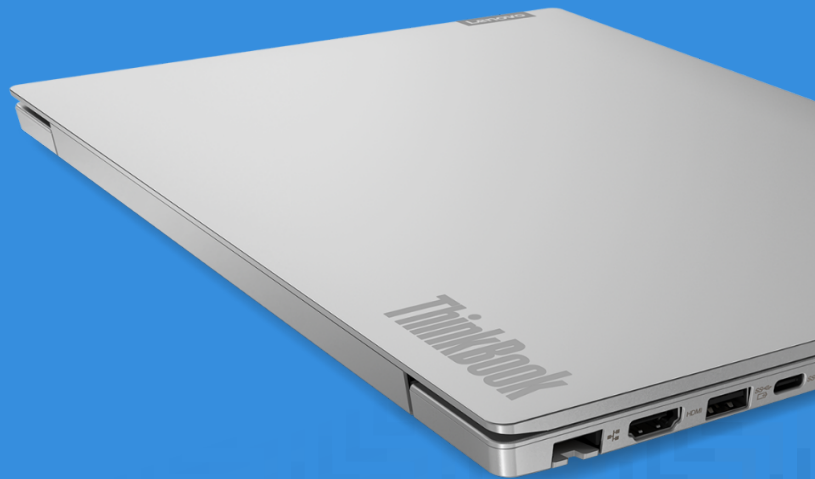




**BUSINESS DEVICES THAT ARE A CLASS APART**



ThinkBook combines the style and user experience of consumer devices with the security and business-class support of ThinkPad.

## ThinkBook 14 IML

Smarter  
technology  
for all

Lenovo

The design and convenience young professionals crave, at a price your organization can afford. This laptop is one of the thinnest and lightest available at this price range, and is packed with innovations; the optional fingerprint power button authenticates the user and wakes the device at the same time. Lenovo Hidden Port enables mouse dongles or nano-USB storage drives to be hidden behind a discrete 'door' in the side of the device.



### REASONS TO BUY

It may have the design aesthetic of the latest consumer electronics with its ultra-narrow frame and anodized aluminum cover, but it's built for business with the same warranty and support services as a ThinkPad. That means your mobile users can access to extended warranties, faster technical support and advanced deployment services.

Optional WiFi 6 technology; with compatible routers and access points this enables more devices to connect at the same time without reducing bandwidth. It also features a WPA3 security protocol that is harder to hack.

The power button has an optional integrated fingerprint reader, so users can power-on or wake the device, and securely authenticate themselves at the same time.



[most.lenovo.com](https://www.lenovo.com)

# ThinkBook 14 IML

## KEY SPECIFICATIONS

Processor	up to 10th Gen Intel Core i7 processor
Operating System	Powered by Windows 10 Pro
Display	14.0" screen, Full HD (1920x1080), WVA, 800:1 contrast ratio 14.0" screen, Full HD (1920x1080), TN, 500:1 contrast ratio
Graphics	Intel UHD Graphics in processor, optional AMD Radeon 625 2GB
Memory	up to 24GB DDR4-2666
Storage	up to 1x 2.5" 2TB SATA HDD + up to 1TB M.2 PCIe NVMe SSD optional Intel Optane 32GB Memory
Audio	2x 2W stereo speakers with Dolby Audio Dual array microphones
Battery†	up to 12hrs (57Wh) or up to 9hrs (45Wh)
Power Adapter	One of the following 65W Slim Tip 65W USB-C Slim
Camera	720p with ThinkShutter
Keyboard	spill-resistant, optional backlit
Color	Mineral Grey
Dimensions	Width: 326mm (12.8") Depth: 230mm (9.06") Height: 17.9mm (0.7")
Weight	from 1.5kg (3.3lb)

## GREEN CERTIFICATIONS

EPEAT Silver, Energy Star 7.1

## OTHER CERTIFICATIONS

MIL-STD-810G military testing

## CONNECTIVITY

I/O Ports	1x Hidden USB2.0, 2x USB 3.1 Gen 1 (1x with Always On), 1x USB-C 3.1 Gen 1, 1x USB-C 3.1 Gen 2 (DisplayPort and power delivery), 4-in-1 card reader, ethernet (RJ-45), HDMI, audio combo jack
WLAN + Bluetooth	One of the following 11ac, 1x1 + BT5.0 11ac, 2x2 + BT5.0 11ax, 2x2 + BT5.0
Docking	Compatible with USB 3.0 & USB-C docking solutions

## SECURITY & PRIVACY

Fingerprint Reader  
FW TPM 2.0  
ThinkShutter camera privacy cover

## Recommended for this device



### ThinkBook 15.6" Laptop Urban Backpack

Multi-functional backpack with fabric exterior

Anti-theft back pocket keeps valuables safe yet accessible

Padded PC compartment fits up to a 15.6" laptop



### Lenovo Dual Platform Notebook & Monitor Stand

Raises the monitor up to a more ergonomic viewing height

Integrates laptop, dock, and monitor, into one convenient work space

Attach a ThinkCentre Tiny underneath the upper platform with a VESA mount (sold separate)

Information presented here may represent the maximum possible configurations for this product, but it does not necessarily reflect what is available in your region. Please ask your rep or check the specifications for specific Part Numbers in your region. † Based on testing with MobileMark 2014. Battery life varies significantly with settings, usage, and other factors. © 2020 Lenovo. Products are available while supplies last. Lenovo is not responsible for photographic or

typographic errors. Lenovo, the Lenovo logo, ThinkPad, ThinkCentre, ThinkBook, ThinkStation and ThinkVision are trademarks or registered trademarks of Lenovo. 3rd party product and service names may be trademarks of others. Depending on factors such as the processing capability of peripheral devices, file attributes, system configuration and operating environments, the actual data transfer rate of USB connectors will vary and is typically slower than published standards.