

tab M10 REL

A NEW TAB EXPERIENCE.

A SOLID FAMILY TABLET.

The Lenovo™ Tab M10 REL is one impressive tablet. Inside lies an impressive FHD screen and dual front speakers for immersive entertainment – impossibly contained within a thin and light profile. This is one tablet you will want to use anywhere in the home or on-the-go.



Lenovo™

WHY YOU SHOULD BUY THE LENOVO TAB M10 REL



Brilliant FHD Display

Treat your eyes to something truly special. The jaw-dropping 10.1" display is designed so you can capture the intensity of an action scene as well as the beautiful details of photos sent from your family.



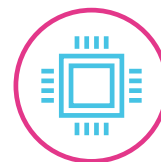
Thin and Light

At just 8.1 mm thin and 520 g, the Tab M10 REL fits seamlessly in your hands or in your backpack. It's built to be taken anywhere with you without ever weighing you down.



Dual Front Speakers

Immerse yourself in booming sound reminiscent of the cinema. Tab M10 REL's dual front speakers and Dolby Audio™ support brings the theater right to your home.



Fast and Powerful

Tab M10 REL packed with powerful Qualcomm® Snapdragon™ Octa-core providing you with the best processing performance.



WWW.LENOVO.COM

tab M10 REL

SPECIFICATIONS

DESIGN



Operating System

Android™ Pie



Display

Size : 10.1" FHD IPS
Resolution : 1920 x 1200
Display Type : LCD
Color Gamut : 70%
Brightness : 320 nits
Touch : Capacitive 10-point Multitouch



Colors

Slate Black
Polar White



Buttons and Ports

Power Key
Volume Key
microSD™/SIM Card Tray
Micro USB
3.5 mm Audio Jack

Camera

Rear
8 MP Auto-Focus
Front
5 MP Fixed-Focus



SIM

Type : Nano SIM
Slots : Single Slot



Sensors

G-Sensor
Vibrator

PERFORMANCE

Processor

Qualcomm® Snapdragon™ 450, Octa-Core, 1.8 GHz

Audio

1 x Microphone

Speakers

2 x Front Speakers

Memory

RAM : 3 GB
ROM : 32 GB
Card Slot : microSD™ Card; Up to 2 TB (exFAT files)

Battery¹

Type : Li-ion Polymer
Capacity : 7000 mAh
Web Browsing : Up to 12 Hours
Video (720p)
Playback Time : Up to 12 Hours



CONNECTIVITY

LTE Band

UMTS : 1/2/5/8
FDD LTE : B1/3/5/7/8/19/20/26
TDD LTE : B38/39/40/41
(Narrow Band 100M)



Wireless Connectivity

WLAN : 802.11 a/b/g/n/ac, Dual Band
Bluetooth® : Bluetooth® 4.2
WiFi Direct : Yes
WiFi Display : Yes
GPS : Yes
A-GPS : Yes
GLONASS² : Yes
FM Radio : Yes

¹ May vary by usage.
² Varies by SKU.
³ Varies by Country.

SOFTWARE

Lenovo Applications

- Launcher
- Contacts
- FM Radio
- System Update
- OOBE
- Recorder
- Camera
- Weather and Clock Widget
- Clock
- App Search
- Notification Center
- Recent Apps UI
- Charging
- Settings
- File Manager
- Lenovo Framework
- Lenovo Account
- Lenovo User Experience

Third-Party Applications³

- Gmail
- Google Chrome
- Google Music
- Google Photos
- Google Calendar
- Google FilesGo
- Google Docs
- Google Sheets
- Google Slides
- Skype™
- Microsoft Outlook
- Netflix

WHAT'S IN THE BOX

- Tab M10 REL
- Travel Adapter
- Micro USB
- Quick-Start Guide
- Warranty
- Safety Guide
- SIM Pin



RECOMMENDED LENOVO SERVICES

Warranty Extensions (1-to-3 Years Total Duration)* The fixed-term, fixed-cost service helps accurately budget for PC expense, protect your valuable investment and potentially lower the cost of ownership.

Accidental Damage Protection* Avoid the hassles of unexpected repair costs. Provides coverage for non-warranted damage incurred under normal operating conditions, such as minor spills, drops or damage to the integrated screen.

* Not available in all countries.

WANT MORE?

Tab P10, Tab E10, Tab E8, Tab E7



WWW.LENOVO.COM



Lenovo reserves the right to alter product offerings and specifications at any time, without notice. Lenovo makes every effort to ensure accuracy of all information but is not liable or responsible for any editorial, photographic or typographic errors. All images are for illustration purposes only. For full Lenovo product, service and warranty specifications visit www.lenovo.com. Lenovo makes no representations or warranties regarding third party products or services. **Trademarks:** The following are trademarks or registered trademarks of Lenovo: Lenovo, the Lenovo logo, Yoga, Google and the Google logo are trademarks of Google Inc. Android is a trademark of Google Inc. Ultrabook, Celeron, Celeron Inside, Core Inside, Intel, Intel Logo, Intel Atom, Intel Atom Inside, Intel Core, Intel Inside, Intel Inside Logo, Intel vPro, Itanium, Itanium Inside, Pentium, Pentium Inside, vPro Inside, Xeon, Xeon Phi and Xeon Inside are trademarks of Intel Corporation in the U.S. and/or other countries. Other company, product and service names may be trademarks or service marks of others. Battery life (and recharge times) will vary based on many factors including system settings and usage. ©2019 Lenovo. All rights reserved.

Lenovo™