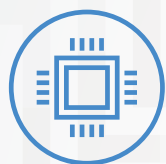


LEGION Slim 7 (15")

THE POWER OF LESS.

The Lenovo™ Legion Slim 7 was engineered for gamers who demand mobility and performance for day and night. Sporting a finely crafted chassis machined from 100% aluminum that is shockingly thin and impressively light, the Legion Slim 7 was expertly crafted for gamers who demand more. Sporting up to a 15.6" 4K, Dolby Vision® HDR supported, this gaming laptop delivers breathtaking visuals wherever life takes you.

WHY YOU SHOULD BUY THE LENOVO LEGION SLIM 7 (15")



Escalate your game

Welcome to the next-generation of gaming performance with up to AMD Ryzen™ 9 4900H mobile processor, 32 GB 3200 MHz DDR4 memory and 2 TB M.2 NVMe PCIe SSD storage, all optimally cooled via Legion Coldfront 2.0.



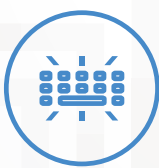
Uncompromising performance for gamers

The Lenovo Legion Slim 7 delivers the wins fueled by the revolutionary AMD Ryzen™ 4000 H-Series mobile processors. With up to 8 ultra-responsive cores, get the new standard for gaming performance in innovative, thin and light laptops.



Epic world of color

Dominate the competition in FHD at 144 Hz or relive epic gaming moments in 4K at 60 Hz with the Legion Slim 7's high dynamic range 15.6" display with Dolby Vision® support.



Strike hard, strike true

The world-class TrueStrike keyboard comes to the Legion Slim 7 which features soft-landing switches for a more robust input experience at 1.3 mm of key travel.



WWW.LENOVO.COM



Lenovo™

LEGION Slim 7 (15")

SPECIFICATIONS

Lenovo Legion S7 15ARH5*

PERFORMANCE

Processor

AMD Ryzen™ 9 4900H Mobile Processor
AMD Ryzen™ 9 4600H Mobile Processor
AMD Ryzen™ 7 4800H Mobile Processor

Operating System

Windows 10 Pro

Graphics

NVIDIA® GeForce RTX™ 2060 with Max-Q Design
NVIDIA® GeForce® GTX 1660 Ti with Max-Q Design
NVIDIA® GeForce® GTX 1650 Ti

Memory

3200 MHz DDR4 : 8 GB / 16 GB / 32 GB

Storage

M.2 NVMe PCIe SSD : 512 GB / 1 TB / 2 TB

Battery¹

4.9 Hours; 3-Cell; 71 WHr
Rapid Charge Boost Supported

Power Adapter

230W Slim Adapter²
170W Slim Adapter³

DESIGN

Display

15.6" UHD (3840 x 2160) IPS (60 Hz / 100% Adobe RGB / VESA DisplayHDR 400 Certified / Dolby Vision® Supported / 500 nits)
15.6" FHD (1920 x 1080) IPS (144 Hz / Up to 3 ms with OD Response Time / 100% sRGB / Dolby Vision® Supported / 300 nits)
15.6" FHD (1920 x 1080) IPS (60 Hz / 100% sRGB / Dolby Vision® Supported / 300 nits)

Dimensions (W x D x H)

(mm) : 356 x 250 x 15.9-17.9
(inches) : 14.01" x 9.84" x 0.6-0.7"

Weight

Starting at 1.86 kg (4.1 lbs)

Backlit Keyboard

White Backlight

Material

Aluminum

Color

Slate Grey

Fingerprint Reader

Fingerprint Reader on Power Button

CONNECTIVITY

Webcam

Top-placed Built-in HD Webcam (720p) with Privacy Shutter

WLAN

2x2 802.11 ax⁴
Killer WiFi AX 1650⁵

Bluetooth®

Bluetooth® 5.1

Audio

2 x 2W Dolby Atmos® Speaker System for Gaming

Input/Output (I/O) Ports

Left Side

1 x 4-in-1 SD Card Reader
1 x Audio Jack

Right Side

2 x USB Type-C™ (DisplayPort™, USB 3.1 Gen 2⁶)

Rear

1 x AC Adapter
2 x USB 3.2⁷ Gen 2

PRELOADED SOFTWARE

- Lenovo Vantage
- Dolby Atmos® Speaker System
- Dolby Vision®
- Xrite-Pantone Color Management
- McAfee® Antivirus



¹ All battery life claims are approximate and based on results using the MobileMark® 2018 v1.0.2.46 battery life benchmark test. Actual battery life will vary and depends on many factors such as product configuration and usage, software use, wireless functionality, power management settings, and screen brightness. The maximum capacity of the battery will decrease with time and use.

² 230W: NVIDIA® GeForce RTX™ 2060 with Max-Q Design & NVIDIA® GeForce® GTX 1660 Ti.

³ 170W: NVIDIA® GeForce® GTX 1650 Ti.

⁴ Base.

⁵ Optional.

⁶ The actual transfer speed of the USB 3.1 Gen 2 will vary and, depending on many factors, such as the processing capability of host and peripheral devices, file attributes and other factors related to system configuration and your operating environments, will be slower than a speed of 10 Gbit/s.

⁷ The actual transfer speed of the USB 3.2 will vary and, depending on many factors, such as the processing capability of host and peripheral devices, file attributes and other factors related to system configuration and your operating environments, will be slower than a speed of 20 Gbit/s.

LENOVO SERVICES

Warranty Upgrades - On-site / In-Home Service

Maximizes PC uptime and productivity by providing convenient, fast repair services in your own home.

Accidental Damage Protection

Avoid the hassles of unexpected repair costs. Provides coverage for non-warranted damage incurred under normal operating

conditions, such as minor spills, drops or damage to the integrated screen.

Warranty Extensions (1-to-3 Years Total Duration)

This fixed-term, fixed-cost service helps accurately budget for PC expenses, protect your valuable investment and potentially lower the cost of ownership over time.

OPTIONS & ACCESSORIES



Lenovo Legion
15.6" Recon Gaming
Backpack



Lenovo Legion
H500 Pro 7.1
Surround Sound
Gaming Headset



Lenovo Legion M500
RGB Gaming Mouse



WWW.LENOVO.COM

Lenovo reserves the right to alter product offerings and specifications at any time, without notice. Lenovo makes every effort to ensure accuracy of all information but is not liable or responsible for any editorial, photographic or typographic errors. All images are for illustration purposes only. For full Lenovo product, service and warranty specifications visit www.lenovo.com. Lenovo makes no representations or warranties regarding third party products or services. ©2020 Advanced Micro Devices, Inc. All rights reserved. AMD, the AMD Arrow logo, Athlon, Radeon and combinations thereof, are trademarks of Advanced Micro Devices, Inc. Microsoft and Windows are registered trademarks of Microsoft Corporation in the United States and/or other countries. 3DMark is a registered trademark of Futuremark Corporation. Other names are for informational purposes only and may be trademarks of their respective owners. Other company, product and service names may be trademarks or service marks of others. Visit www.lenovo.com/lenovo/us/en/safecomp/ periodically for the latest information on safe and effective computing. ©2020 Lenovo. All rights reserved.



Lenovo™