

Lenovo™ Yoga™ Tab 13



Lenovo



WWW.LENOVO.COM

Lenovo™ Yoga™ Tab 13

SPECIFICATIONS

DESIGN



Weight

830 g (1.83 lbs)

Operating System

Android™ 11 or later²

PERFORMANCE

Processor

Qualcomm® Snapdragon™ 870 (SM8250-AC), Octa-Core, Up to 3.2 GHz

Audio

Lenovo Premium Audio Solution, Optimized with Dolby Atmos®
3 Microphones

Speakers

Quad JBL® Speakers
2W x2 (on the top), 2.5W x2 (on the bottom)
(with 5cc audio chamber)

Memory

RAM + ROM: 8 GB (LPDDR5) + 128 GB/256 GB

Battery (for ROW SKU)

Capacity : Min. 10000 mAh+
Quick Charge : QC 4.0 (10V/3A, 30W)
Online Video Playback (1080p) : Up to 12 Hours³



Display

Size : 13"
Resolution : 2160 x 1350, Dolby Vision® Supported
Screen : LTPS
Color Gamut : 100% sRGB
Brightness : 400 nits
Refresh Rate : 60 Hz
Touch : 10-point Multitouch



Color

Shadow Black

Sensors

Accelerometer (G) Sensor
E-Compass
Ambient Light Sensor
Gyroscope

CONNECTIVITY

Wireless Connectivity

WLAN : WiFi 802.11 a/b/g/n/ac/ax, MU-MIMO, 2.4 GHz & 5 GHz Dual Band, WiFi 6 Certified⁴
Bluetooth® : 5.2
WiFi Direct : Yes (Google Miracast)



Integrated Camera

Rear
N/A
Front
8MP RGB + TOF



Login Security

Fingerprint : N/A
Face Unlock : Yes

Buttons and Ports

Power On/Off Button
Micro-HDMI™⁵ with Support of HDCP 1.4
USB Type-C™ 3.1 (support of data transfer, charging, USB Type-C™ Headset, and DisplayPort™ 1.4)



SOFTWARE

Google Contacts	Netflix
Gmail	Amazon Music
Google Chrome	Google Assistant
Recorder	Google Clock
YouTube	Duo
YouTube Music	Drive
Google Photo	Google One
Google Calendar	Maps
Google Calculator	Google Play Books
Google Files	Google Play Games
Google Kids Space	Dolby Atmos®
Google	Dolby Vision®
Entertainment Space	Yandex Search (RU only)
Play Store	Yandex Browser (RU only)
Office	
OneNote	

TUV Certified Eye Care

With special light and display technology development, Lenovo tablets ensure that the display lowers harmful blue light when appropriate to reduce strain on the eyes.



¹ This thickness including the speaker bar.

² Lenovo tablets typically receive at least 1 Android™ OS upgrade cycle. May vary per models, countries, regions, retailers and operators. Contact support for more details.

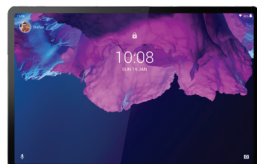
³ All battery life claims are approximate. Actual battery performance will vary and depend on numerous factors including product configuration and usage, software, operating conditions, wireless functionality, power management settings, screen brightness and other factors. The maximum capacity of the battery will naturally decrease with time and usage.

⁴ WiFi is a trademark of WiFi Alliance®.

⁵ The terms HDMI, HDMI High-Definition Multimedia Interface, and the HDMI Logo are trademarks or registered trademarks of HDMI Licensing Administrator, Inc.

WHAT'S IN THE BOX

- Lenovo Yoga Tab 13
- 10V/3A Charging Adapter
- 1 x USB Type-C™ to Type-C™ Cable (1.5 m) for Charging
- 1 x USB Type-C™ to 3.5 mm Headphone Jack Adapter
- 1 x Micro-HDMI™ to the Full-HDMI™ Cable (1 m)
- Quick Start Guide & Safety, Warranty Card
- 1 x Anti-sliding Rubber (on the kickstand)



ACCESSORIES



Lenovo Urban Sleeve



Lenovo Precision Pen 2

LENOVO SERVICES

Lenovo Premium Care*

Premium Care is the hassle-free solution for all your technical support needs. Upgrade your standard warranty with our front-of-the-queue customer support service and get 24/7 real-person support from experts who provide solutions on your first contact.

Lenovo Smart Performance

Smart Performance Services within Lenovo Vantage will keep your system running at optimum performance and proactively fix issues that affect PC performance, internet performance, and security.

Lenovo Accidental Damage Protection

Avoid the hassles of unexpected damage & repair costs. With coverage for drops, spills, electric surges, and broken LCD screens, accidental damage protection makes it easy to repair to your PCs and ensures your device is up and running fast.

Lenovo Warranty Extensions (1-to-3 Years Duration)

Gain complete peace of mind by extending your warranty to minimize unexpected expenses and repair costs.

* Launching in AP, NA, and UKI on July 30th. EMEA will launch by end of Q2.

WANT MORE?

Lenovo Tab P11 Pro



WWW.LENOVO.COM



android

Lenovo reserves the right to alter product offerings and specifications at any time, without notice. Lenovo makes every effort to ensure accuracy of all information but is not liable or responsible for any editorial, photographic or typographic errors. All images are for illustration purposes only. For full Lenovo product, service and warranty specifications visit www.lenovo.com. Lenovo makes no representations or warranties regarding third party products or services. **Trademarks:** The following are trademarks or registered trademarks of Lenovo: Lenovo, the Lenovo logo, Yoga. Google and the Google logo are trademarks of Google Inc. Android is a trademark of Google Inc. Ultrabook, Celeron, Celeron Inside, Core Inside, Intel, Intel Logo, Intel Atom Inside, Intel Core, Intel Inside, Intel Inside Logo, Intel vPro, Itanium, Itanium Inside, Pentium, Pentium Inside, vPro Inside, Xeon, Xeon Phi and Xeon Inside are trademarks of Intel Corporation in the U.S. and/or other countries. Other company, product and service names may be trademarks or service marks of others. Battery life (and recharge times) will vary based on many factors including system settings and usage. ©2021 Lenovo. All rights reserved.

Lenovo