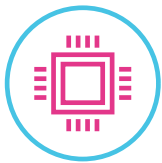


ideacentre AIO 520

24/7 EXCELLENCE

Available in three convenient sizes, the Lenovo™ IdeaCentre™ AIO 520 is as elegant as it is functional. Featuring a widely adjustable borderless touchscreen display and powerful performance, this all-in-one is the perfect solution for no-hassle home computing.

WHY YOU SHOULD BUY THE LENOVO IDEACENTRE AIO 520



Power and speed

IdeaCentre AIO 520 is equipped with up to 8th Generation Intel® Core™ processing, a powerful new standard for PC performance that delivers uncompromising responsiveness.

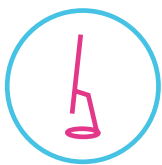


Seamless graphics, whether you're editing or watching

Want smooth, stutter-free graphics performance? Upgrade with AMD Radeon™ 530, or up to AMD Radeon™ 550 on the 27" model. Discrete graphics are designed to deliver faster, more power-efficient performance, whether you're streaming video or editing videos.



Lenovo™



Sleek and stylish

The IdeaCentre AIO 520 was designed with a razor-thin border, slim monitor, and sleek steel stand. This modern profile is a perfect accent for your home's workspace.



QHD clarity

Rewatching snowboarding footage? Relive the moment in QHD (2560 x 1440) clarity, on a near-edgeless 27" display. And with optional 10-point multitouch display, it's even easier to scroll through footage, pause, and zoom-in on the best clips. Also available with FHD on the 23.8" and 21.5" models.



WWW.LENOVO.COM



ideacentre AIO 520

SPECIFICATIONS

Lenovo IdeaCentre AIO 520-22ICB*, Lenovo IdeaCentre AIO 520-24ICB*,
Lenovo IdeaCentre AIO 520-27ICB*

PERFORMANCE

Processor

520-24ICB, 520-27ICB

8th Generation Intel® Core™ i7-8700T Processor
8th Generation Intel® Core™ i5-8400T Processor
8th Generation Intel® Core™ i3-8100T Processor
Intel® Pentium® Gold G5400T Processor

520-22ICB

8th Generation Intel® Core™ i5-8400T Processor
8th Generation Intel® Core™ i3-8100T Processor
Intel® Pentium® Gold G5400T Processor
Intel® Celeron® G4900T Processor

Operating System

Windows 10 Home or Windows 10 Pro

Graphics

520-22ICB, 520-24ICB

AMD Radeon™ 530
Integrated Graphics

520-27ICB

AMD Radeon™ RX 550
Integrated Graphics

Memory

520-22ICB, 520-24ICB

4 GB/8 GB/16 GB DDR4

520-27ICB

4 GB/8 GB/12 GB/16 GB DDR4

Storage

128 GB/256 GB PCIe SSD
1 TB/2 TB SATA HDD

Microphone

Microphone/Earphone Combo

Audio

2 x 3W

Power Supply

90W, 120W or 150W

* With DVD drive.

DESIGN

Display

520-22ICB

21.5" FHD (1920 x 1080) Touchscreen

520-24ICB

23.8" FHD (1920 x 1080) Touchscreen

520-27ICB

27" QHD (2560 x 1440) Touchscreen or
Non-Touchscreen

Dimensions (W x D x H)

520-22ICB

(mm) : 490.7 x 317.46 x 57
(inches) : 19.32" x 12.5" x 2.24"

520-24ICB

(mm) : 541.2 x 346.06 x 57.3
(inches) : 21.31" x 13.62" x 2.25"

520-27ICB (Touchscreen)

(mm) : 624.35 x 403.45 x 127.71
(inches) : 24.58" x 15.88" x 4.99"

520-27ICB (Non-Touchscreen)

(mm) : 615 x 387.25 x 126.61
(inches) : 24.21" x 15.25" x 4.99"

Weight

520-22ICB

Starting at 12.46 lbs (5.65 kg)

520-24ICB

Starting at 13.6 lbs (6.17 kg)

520-27ICB (Touchscreen)

Starting at 23.15 lbs (10.5 kg)

520-27ICB (Non-Touchscreen)

Starting at 19.47 lbs (8.83 kg)

Colors

520-22ICB, 520-24ICB

Black
Silver

520-27ICB

Silver

CONNECTIVITY

WLAN & Bluetooth®

1 x 1 WiFi 802.11 ac /
Bluetooth® 4.0 Combo with WiFi Card

Input/Output (I/O) Ports

520-22ICB, 520-24ICB

3 x USB 2.0
1 x USB 3.1
1 x USB 3.0
3-in-1 Card Reader (SD, SDHC, SDXC)
LAN

Microphone/Earphone Combo

Power DC Jack

HDMI™-In

HDMI™-Out

520-27ICB

2 x USB 2.0

1 x USB 3.1

1 x USB 3.0 Type-C™

1 x USB 3.0

3-in-1 Card Reader (SD, SDHC, SDXC)

LAN

Microphone/Earphone Combo

Power DC Jack

HDMI™-In

HDMI™-Out

PRELOADED SOFTWARE

- Lenovo Vantage
- Microsoft Office 2016
- McAfee® LiveSafe™
- Lenovo App Explorer
- CyberLink PowerDVD/Power2Go*



LENOVO SERVICES

Warranty Upgrades - On-site / In-Home Service

Maximizes PC uptime and productivity by providing convenient, fast repair services in your own home.

Accidental Damage Protection

Avoid the hassles of unexpected repair costs. Provides coverage for non-warranted damage incurred under normal operating conditions, such as minor spills, drops or damage to the integrated screen.

Warranty Extensions (1-to-3 Years Total Duration)

This fixed-term, fixed-cost service helps accurately budget for PC expenses, protect your valuable investment and potentially lower the cost of ownership over time.

* Example of Lenovo IdeaCentre AIO catalogue naming convention



Intel® platform codes

Haswell H81: IHH, BroadWell U: IBU, Skylake Z170: ISZ, Skylake B150: ISB, KabyLake: IKL, Skylake H110/H170: ISH, Skylake U: ISU, Apollo Lake: IAP, KabyLake H110: IKH, Coffee Lake B360: ICB, Coffee Lake H: ICH, Coffee Lake Z370 Overclock: ICO



WWW.LENOVO.COM

Lenovo reserves the right to alter product offerings and specifications at any time, without notice. Lenovo makes every effort to ensure accuracy of all information but is not liable or responsible for any editorial, photographic or typographic errors. All images are for illustration purposes only. For full Lenovo product, service and warranty specifications visit www.lenovo.com. Lenovo makes no representations or warranties regarding third party products or services. **Trademarks:** The following are trademarks or registered trademarks of Lenovo: Lenovo, the Lenovo logo, ideapad, IdeaCentre, yoga and yoga home. Microsoft, Windows and Vista are registered trademarks of Microsoft Corporation. Ultrabook, Celeron, Celeron Inside, Core Inside, Intel, Intel Logo, Intel Atom, Intel Atom Inside, Intel Core, Intel Inside, Intel Inside Logo, Intel vPro, Itanium, Itanium Inside, Pentium, Pentium Inside, vPro Inside, Xeon, Xeon Phi, and Xeon Inside are trademarks of Intel Corporation in the U.S. and/or other countries. Other company, product and service names may be trademarks or service marks of others. Visit www.lenovo.com/lenovo/us/en/safecomp/ periodically for the latest information on safe and effective computing. ©2018 Lenovo. All rights reserved.



Lenovo™