



The product images are for illustration purposes only. Actual product appearance, ports, keyboard layout, and accessories may vary by model.

- Intel Core i5-14500HX, 14C (6P + 8E) / 20T, P-core 2.6 / 4.9GHz, E-core 1.9 / 3.5GHz, 24MB Intel Smart Cache
- 2x 16GB SODIMM DDR5-5600
- 1TB SSD M.2 2280 PCIe 4.0x4 NVMe
- NVIDIA GeForce RTX 4060 8GB GDDR6, Boost Clock 2370MHz, TGP 140W, 233 AI TOPS
- Windows 11 Home, Polish
- Case color - Onyx Grey (with White Backlit Keyboard)
- 3Y Premium Care with Onsite from 2Y Courier/Carry in (CPN)

**Premium Care - Advanced Support from Real People. Real Fast.**



**REAL PERSON**

Choose how you want to reach us - through the phone, chat or email - our expert technicians will take care of you.



**REAL FAST**

Highly trained technicians will provide you real-time solutions, whatever the issue, on your first contact. If needed, our team will schedule an onsite visit for the next business day.



**HASSLE FREE**

'Getting started' and 'how-to' assistance for hardware and software. Easy solutions that are simple to reach - that's how Premium Care delivers you the ideal support experience.



**PC HEALTH CHECK**

Free annual PC Health Check that allows our experts to spot issues before you do so they can resolve them quickly and help you avoid PC problems.

**Accidental Damage Protection - Protection of your PC from the unexpected.**

Experience shows that a significant portion of devices may be damaged (and not covered under warranty) in the first three years. Lenovo's Accidental Damage Protection service covers accidents beyond the system warranty such as drops, spills, bumps and even electrical surges. Make sure your new device has maximum protection, avoid unplanned costs and get peace of mind.

**Base Warranty** - Included with the systems you purchase, default 1- or 3-year coverage window.

**Warranty Extensions & Upgrades** - Service and protection that's right for your circumstances.

- Pick Up & Return Courier
- Onsite Support
- Technician Installed Customer
- Replaceable Unit Service
- International Warranty Upgrade

**Recommended Accessories** Poland



Lenovo Wireless Headphone 2000

GXD1W20502



ThinkPad Bluetooth Presenter Mouse (Aura Edition)

4Y51T62792



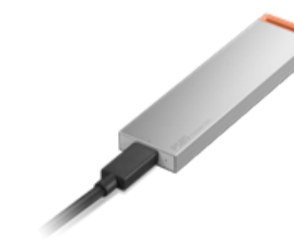
Lenovo USB 20Gbps USB-C to USB-C Cable 1.5m

4X91U92143



Lenovo Legion 17" Gaming Backpack GB800 (Light Gray)

GX41U39300



Lenovo PS8S Portable SSD 4TB

4XB1T91892



Lenovo Select FHD Webcam Gen2

GXC1S15023

>> [View More Accessories](#)

## PERFORMANCE

### Processor

Intel Core™ i5-14500HX, 14C (6P + 8E) / 20T, P-core 2.6 / 4.9GHz, E-core 1.9 / 3.5GHz, 24MB Intel® Smart Cache

### AI PC Category

AI-Powered Gaming PC<sup>[1]</sup>

### Graphics

NVIDIA GeForce RTX™ 4060 8GB GDDR6, Boost Clock 2370MHz, TGP 140W, 233 AI TOPS

### Chipset

Intel® HM770 Chipset

### Memory

2x 16GB SODIMM DDR5-5600

### Memory Slots

Two DDR5 SODIMM slots, dual-channel capable

### Max Memory<sup>[2]</sup>

Up to 32GB DDR5-5600 offering

### Storage

1TB SSD M.2 2280 PCIe® 4.0x4 NVMe®

### Storage Slot

Two M.2 2280 PCIe® 4.0 x4 slots

### Max Storage Support<sup>[3]</sup>

Up to two drives, 2x M.2 SSD • M.2 2242 SSD up to 1TB • M.2 2280 SSD up to 1TB

### Optical

None

### Card Reader

No Card Reader

### Audio Chip

High Definition (HD) Audio, Realtek® ALC3287 codec

### Speakers

Stereo speakers, 2W x2, optimized with Nahimic Audio

### Microphone

2x, Array

### Camera

FHD 1080p with Privacy Shutter

### Battery

80Wh

### Power Adapter

300W Slim Tip (3-pin)

### Special Features

AI Chip: LA1

## DESIGN

### Display<sup>[4]</sup>

16" WQXGA (2560x1600) IPS 500nits Anti-glare, 100% DCI-P3, 240Hz, DisplayHDR™ 400, Dolby Vision®, G-SYNC®, Low Blue Light, High Gaming Performance

### Touchscreen

None

### Screen-to-Body Ratio

92% AAR (active area ratio)

### Color Calibration

Factory Color Calibration

### Pen

Pen Not Supported

### Keyboard

White Backlit, English

### Touchpad

Buttonless Mylar® surface multi-touch touchpad, 75 x 120 mm (2.95 x 4.72 inches)

### Dimensions (WxDxH)<sup>[5]</sup>

363.4 x 261.75 x 21.99-26.95 mm (14.31 x 10.31 x 0.87-1.06 inches)

### Weight<sup>[6]</sup>

Around 2.5 kg (5.5 lbs)

### Case Color

Onyx Grey (with White Backlit Keyboard)

### Case Material

Aluminium (Top), PC-ABS (Bottom)

### Surface Treatment

Anodizing

## SOFTWARE

### Operating System

Windows® 11 Home, Polish

### Bundled Software

Office Trial

## CONNECTIVITY

### WLAN + Bluetooth

Wi-Fi® 6E, 802.11ax 2x2 + BT5.2

### WWAN

WWAN Not Supported

### Ethernet

100/1000M (RJ-45)

### Standard Ports

- 1x USB-A (USB 5Gbps / USB 3.2 Gen 1), Always On
- 3x USB-A (USB 5Gbps / USB 3.2 Gen 1)
- 1x USB-C® (USB 10Gbps / USB 3.2 Gen 2), with Lenovo® PD 140W and DisplayPort™ 1.4
- 1x USB-C® (USB 10Gbps / USB 3.2 Gen 2), with DisplayPort™ 1.4
- 1x HDMI® 2.1, up to 8K/60Hz
- 1x Headphone / microphone combo jack (3.5mm)
- 1x Ethernet (RJ-45)
- 1x Slim tip Power connector

### Docking

Various docking solutions supported via Thunderbolt™ / USB-C®. For more compatible docking solutions, please visit [Docking for Legion Pro 5 16IRX9](#)

## SECURITY & PRIVACY

### Security Chip

Firmware TPM 2.0 Enabled

### Fingerprint Reader

No Fingerprint Reader

### Other Security

E-shutter

## SERVICE

### Base Warranty

2-year, Courier or Carry-in with 1-year Battery

### Included Upgrade

3Y Premium Care with Onsite from 2Y Courier/Carry in (CPN)

## ACCESSORIES

### Bundled Accessories

Lenovo Legion™ Gaming Speed Mouse Pad M

## CERTIFICATIONS

### Green Certifications

- ErP Lot 3
- RoHS compliant

### Other Certifications

- TÜV Rheinland® High Gaming Performance
- TÜV Rheinland® Low Blue Light (Hardware Solution)

## MODEL

TopSeller : No EAN / UPC / JAN: 198153966707  
Announce Date: 2024-04-19 End of Support : 2029-11-23

### Note:

[1] AI-Powered Gaming PCs feature Lenovo AI Engine+ and NVIDIA GeForce RTX GPUs to handle AI-driven tasks and deliver exceptional gaming performance.

[2] The max memory is based on the test results with current Lenovo memory offerings.

[3] The storage capacity supported is based on the test results with current Lenovo storage offerings.

[4] IPS (in-plane switching) technology may refer to IPS, PLS, ADS, AHVA, AAS.

[5] The system dimensions may vary depending on configurations.

[6] The system weight is approximate and based on results in Lenovo lab, which varies depending on the source of component, variance of the distribution of each component, and manufacturing process. It may not be the exact weight for each specific model.

- Please refer to the official [Lenovo store website](#) or contact a local Lenovo sales representative or authorized business partner for current inventory and purchase options.
- Lenovo reserves the right to change specifications without notice.