



The product images are for illustration purposes only. Actual product appearance, ports, keyboard layout, and accessories may vary by model.

- Intel Core i7-14700HX, 20C (8P + 12E) / 28T, P-core 2.1 / 5.5GHz, E-core 1.5 / 3.9GHz, 33MB Intel Smart Cache
- 2x 16GB SODIMM DDR5-5600
- 1TB SSD M.2 2280 PCIe 4.0x4 NVMe
- NVIDIA GeForce RTX 4060 8GB GDDR6, Boost Clock 2370MHz, TGP 140W, 233 AI TOPS
- Case color - Onyx Grey (with White Backlit Keyboard)
- 3Y Premium Care with Onsite from 2Y Courier/Carry in (CPN)

Premium Care - Advanced Support from Real People. Real Fast.



REAL PERSON

Choose how you want to reach us - through the phone, chat or email - our expert technicians will take care of you.



REAL FAST

Highly trained technicians will provide you real-time solutions, whatever the issue, on your first contact. If needed, our team will schedule an onsite visit for the next business day.



HASSLE FREE

'Getting started' and 'how-to' assistance for hardware and software. Easy solutions that are simple to reach - that's how Premium Care delivers you the ideal support experience.



PC HEALTH CHECK

Free annual PC Health Check that allows our experts to spot issues before you do so they can resolve them quickly and help you avoid PC problems.

Accidental Damage Protection - Protection of your PC from the unexpected.

Experience shows that a significant portion of devices may be damaged (and not covered under warranty) in the first three years. Lenovo's Accidental Damage Protection service covers accidents beyond the system warranty such as drops, spills, bumps and even electrical surges. Make sure your new device has maximum protection, avoid unplanned costs and get peace of mind.

Base Warranty - Included with the systems you purchase, default 1- or 3-year coverage window.

Warranty Extensions & Upgrades - Service and protection that's right for your circumstances.

- Pick Up & Return Courier
- Onsite Support
- Technician Installed Customer
- Replaceable Unit Service
- International Warranty Upgrade

Recommended Accessories Poland



Lenovo 16" Laptop Topload T210 Beige (ECO)

GX41W44768



Lenovo Wireless Headphone 2000

GXD1W20502



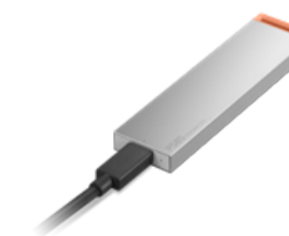
ThinkPad Bluetooth Presenter Mouse (Aura Edition)

4Y51T62792



Lenovo USB 20Gbps USB-C to USB-C Cable 1.5m

4X91U92143



Lenovo PS8S Portable SSD 4TB

4XB1T91892



Lenovo Select FHD Webcam Gen2

GXC1S15023

>> [View More Accessories](#)

PERFORMANCE

Processor

Intel Core™ i7-14700HX, 20C (8P + 12E) / 28T, P-core 2.1 / 5.5GHz, E-core 1.5 / 3.9GHz, 33MB Intel® Smart Cache

AI PC Category

AI-Powered Gaming PC^[1]

Graphics

NVIDIA GeForce RTX™ 4060 8GB GDDR6, Boost Clock 2370MHz, TGP 140W, 233 AI TOPS

Chipset

Intel® HM770 Chipset

Memory

2x 16GB SODIMM DDR5-5600

Memory Slots

Two DDR5 SODIMM slots, dual-channel capable

Max Memory^[2]

Up to 32GB DDR5-5600 offering

Storage

1TB SSD M.2 2280 PCIe® 4.0x4 NVMe®

Storage Slot

Two M.2 2280 PCIe® 4.0 x4 slots

Max Storage Support^[3]

Up to two drives, 2x M.2 SSD • M.2 2242 SSD up to 1TB • M.2 2280 SSD up to 1TB

Optical

None

Card Reader

No Card Reader

Audio Chip

High Definition (HD) Audio, Realtek® ALC3287 codec

Speakers

Stereo speakers, 2W x2, optimized with Nahimic Audio

Microphone

2x, Array

Camera

FHD 1080p with Privacy Shutter

Battery

80Wh

Power Adapter

300W Slim Tip (3-pin)

Special Features

AI Chip: LA1

DESIGN

Display^[4]

16" WQXGA (2560x1600) IPS 500nits Anti-glare, 100% DCI-P3, 240Hz, DisplayHDR™ 400, Dolby Vision®, G-SYNC®, Low Blue Light, High Gaming Performance

Touchscreen

None

Screen-to-Body Ratio

92% AAR (active area ratio)

Color Calibration

Factory Color Calibration

Pen

Pen Not Supported

Keyboard

White Backlit, English

Touchpad

Buttonless Mylar® surface multi-touch touchpad, 75 x 120 mm (2.95 x 4.72 inches)

Dimensions (WxDxH)^[5]

363.4 x 261.75 x 21.99-26.95 mm (14.31 x 10.31 x 0.87-1.06 inches)

Weight^[6]

Around 2.5 kg (5.5 lbs)

Case Color

Onyx Grey (with White Backlit Keyboard)

Case Material

Aluminium (Top), PC-ABS (Bottom)

Surface Treatment

Anodizing

SOFTWARE

Operating System

None

Bundled Software

None

CONNECTIVITY

WLAN + Bluetooth

Wi-Fi® 6E, 802.11ax 2x2 + BT5.2

WWAN

WWAN Not Supported

Ethernet

100/1000M (RJ-45)

Standard Ports

- 1x USB-A (USB 5Gbps / USB 3.2 Gen 1), Always On
- 3x USB-A (USB 5Gbps / USB 3.2 Gen 1)
- 1x USB-C® (USB 10Gbps / USB 3.2 Gen 2), with Lenovo® PD 140W and DisplayPort™ 1.4
- 1x USB-C® (USB 10Gbps / USB 3.2 Gen 2), with DisplayPort™ 1.4
- 1x HDMI® 2.1, up to 8K/60Hz
- 1x Headphone / microphone combo jack (3.5mm)
- 1x Ethernet (RJ-45)
- 1x Slim tip Power connector

Docking

Various docking solutions supported via Thunderbolt™ / USB-C®. For more compatible docking solutions, please visit [Docking for Legion Pro 5 16IRX9](#)

SECURITY & PRIVACY

Security Chip

Firmware TPM 2.0 Enabled

Fingerprint Reader

No Fingerprint Reader

Other Security

E-shutter

SERVICE

Base Warranty

2-year, Courier or Carry-in with 1-year Battery

Included Upgrade

3Y Premium Care with Onsite from 2Y Courier/Carry in (CPN)

ACCESSORIES

Bundled Accessories

Lenovo Legion™ Gaming Speed Mouse Pad M

CERTIFICATIONS

Green Certifications

- ErP Lot 3
- RoHS compliant

Other Certifications

- TÜV Rheinland® High Gaming Performance
- TÜV Rheinland® Low Blue Light (Hardware Solution)

MODEL

TopSeller : No EAN / UPC / JAN: 198153966684
Announce Date: 2024-04-19 End of Support : 2029-11-23

Note:

[1] AI-Powered Gaming PCs feature Lenovo AI Engine+ and NVIDIA GeForce RTX GPUs to handle AI-driven tasks and deliver exceptional gaming performance.

[2] The max memory is based on the test results with current Lenovo memory offerings.

[3] The storage capacity supported is based on the test results with current Lenovo storage offerings.

[4] IPS (in-plane switching) technology may refer to IPS, PLS, ADS, AHVA, AAS.

[5] The system dimensions may vary depending on configurations.

[6] The system weight is approximate and based on results in Lenovo lab, which varies depending on the source of component, variance of the distribution of each component, and manufacturing process. It may not be the exact weight for each specific model.

- Please refer to the official [Lenovo store website](#) or contact a local Lenovo sales representative or authorized business partner for current inventory and purchase options.
- Lenovo reserves the right to change specifications without notice.