



The product images are for illustration purposes only. Actual product appearance, ports, keyboard layout, and accessories may vary by model.

Premier Support - A direct 24x7x365 line to our most elite technicians.

- Advanced technical support, 24x7x365, in more than 100 markets
- Comprehensive hardware & OEM software support
- Single point of contact for simplified end-to-end case management
- Technical Account Managers for proactive relationship and escalation management
- Priority on service delivery and repair parts
- Lenovo Service Connect Portal for customized reporting and product support

Accidental Damage Protection - Protection of your PC from the unexpected.

Experience shows that a significant portion of devices may be damaged (and not covered under warranty) in the first three years. Lenovo's Accidental Damage Protection service covers accidents beyond the system warranty such as drops, spills, bumps and even electrical surges. Make sure your new device has maximum protection, avoid unplanned costs and get peace of mind.

Base Warranty - Included with the systems you purchase, default 1- or 3-year coverage window.

Warranty Extensions & Upgrades - Service and protection that's right for your circumstances.

- Pick Up & Return Courier
- Onsite Support
- Technician Installed Customer
- Replaceable Unit Service
- International Warranty Upgrade

Recommended Accessories Poland



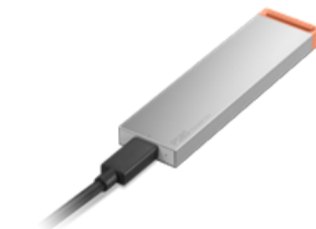
Lenovo Wireless Headphone 2000

GXD1W20502



ThinkPad Bluetooth Presenter Mouse (Aura Edition)

4Y51T62792



Lenovo PS8S Portable SSD 4TB

4XB1T91892

>> [View More Accessories](#)

Recommended Services

Best

5Y Onsite upgrade from 3Y Onsite (5WS1R69022)

PERFORMANCE**Processor**

Intel Core™ i9-14900, 24C (8P + 16E) / 32T, Max Turbo up to 5.8GHz, P-core 2.0 / 5.4GHz, E-core 1.5 / 4.3GHz, 36MB Intel® Smart Cache

AI PC Category

AI PC^[1]

NPU

None

Graphics^[2]

NVIDIA GeForce RTX™ 4060 8GB GDDR6

Chipset

Intel® Q670 Chipset

Memory

2x 32GB SODIMM DDR5-5200

Memory Slots

Two DDR5 SODIMM slots, dual-channel capable

Max Memory^[3]

Up to 64GB DDR5-5200

Storage

2TB SSD M.2 2280 PCIe® 4.0x4 Performance NVMe® Opal 2.0

Max Storage Support^[4]

Dual SSD mode: up to two drives, 2x M.2 SSD • M.2 2280 SSD up to 2TB

RAID Preset

None

Card Reader

No card reader

Optical

None

Audio Chip

High Definition (HD) Audio

Speakers

2Wx1

Power Supply

350W 92%

DESIGN**Keyboard**

USB Calliope Keyboard, Black, English (EU)

Mouse

USB Calliope Mouse, Black

Expansion Slots

Four M.2 slots (one for WLAN, one for AI Card, two for SSD)

Case Color

Luna Grey

Pen

Pen Not Supported

Form Factor

Tiny (3.6L)

Dimensions (WxDxH)^[5]

195 x 191 x 108 mm (7.68 x 7.52 x 4.25 inches)

Weight^[6]

Around 3.5 kg (7.72 lbs)

CONNECTIVITY**WLAN + Bluetooth**

Intel® Wi-Fi® 7 BE200, 802.11be 2x2 + BT5.3, vPro®^[7]

WWAN

WWAN Not Supported

Ethernet

Integrated 100/1000M

Front Ports

- 1x USB-C® (USB 20Gbps / USB 3.2 Gen 2x2), data transfer only
- 2x USB-A (USB 10Gbps / USB 3.2 Gen 2), one supports 5V@2.1A charging
- 1x headphone / microphone combo jack (3.5mm)

Rear Ports^[8]

- 2x USB-A (USB 10Gbps / USB 3.2 Gen 2)
- 2x USB-A (USB 5Gbps / USB 3.2 Gen 1)
- 1x HDMI® 2.1 TMDS
- 1x HDMI® 2.1a FRL
- 4x DisplayPort™ 1.4a
- 1x Ethernet (GbE RJ-45)

Optional Rear Ports (configured)

1x HDMI® 2.1a FRL, 3x DP 1.4a (HBR3, DSC) on NVIDIA GeForce RTX™ 4060

SECURITY & PRIVACY**Security Chip**

Firmware TPM 2.0 integrated in chipset

Fingerprint Reader

No fingerprint reader

Physical Locks

Kensington Security Slot™

MANAGEABILITY**System Management^[9]**

Intel® vPro® Enterprise

SERVICE**Base Warranty**

1-year, Courier or Carry-in

Included Upgrade

3Y Onsite from 1Y Courier/Carry In SEE (CPN)

CERTIFICATIONS**Green Certifications**

- ENERGY STAR® 8.0
- ErP Lot 3
- GREENGUARD®
- RoHS compliant

- TCO Certified

SOFTWARE**Operating System**

Windows® 11 Pro, Polish / English

Bundled Software

None

ACCESSORIES**Bundled Accessories**

None

MODEL

TopSeller : Yes

EAN / UPC / JAN: 0198153820153

Announce Date: 2024-08-20

End of Support : 2031-01-29

Note:

[1] AI PCs have a NPU capable of 10+ TOPs to run the Copilot assistant by pressing the optional Microsoft Copilot key or using Win + C.

[2] The information of integrated graphics are not applicable for the models with processor which has no integrated graphics inside (for the details, please refer to processor section).

[3] The max memory is based on the test results with current Lenovo memory offerings.

[4] The max capacity of each disk type is based on the test results with current Lenovo storage offerings.

[5] The system dimensions may vary depending on configurations.

[6] The system weight is approximate and based on results in Lenovo lab, which varies depending on the source of component, variance of the distribution of each component, and manufacturing process. It may not be the exact weight for each specific model.

[7] Intel vPro platform requires the hardware and software necessary to deliver the manageability use cases, security features, system performance, and stability that define the platform. For detailed vPro support information, please refer to the System Management section.

[8] For video ports on discrete graphics, please see [graphics section](#)

[9] Intel vPro offers a superset of DASH's defined capabilities.

- Please refer to the official [Lenovo store website](#) or contact a local Lenovo sales representative or authorized business partner for current inventory and purchase options.
- Lenovo reserves the right to change specifications without notice.