

# ideapad320

## LIFE JUST GOT EASIER.

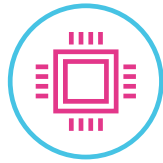
Everything about the Lenovo™ IdeaPad™ 320 is designed to simplify your life. It will handle any task with ease, thanks to powerful processing and discrete graphics options. Preloaded with Windows 10 Home, you'll have the personal assistance of Cortana, designed to help open apps and answer your questions—whether typed or spoken. From the new streamlined design to a cleaner desktop interface, you'll enjoy the simplicity that Lenovo IdeaPad 320 offers. The biggest challenge you'll face is choosing your perfect color.

### WHY YOU SHOULD BUY THE LENOVO IDEAPAD 320



#### Style built to last

Featuring a special protective finish to guard against wear and tear, the IdeaPad 320 will easily withstand whatever life throws your way. Available in a range of sophisticated tone-on-tone colors.



#### Impressive performance

Powerful 6<sup>th</sup> Generation Intel® Core™ i7 processing, plus up to 12 GB DDR4 (via memory slot), guarantee lightning-fast responsiveness. Run multiple programs simultaneously, and transition seamlessly between web tabs—you'll be able to multi-task with ease.



Lenovo™



#### Smooth graphics

The IdeaPad 320 offers a range of graphics options, including a powerful NVIDIA® GeForce® 920MX graphics card. Discrete graphics cards rely on their own processing power, so they don't drain the CPU's output to other functions. Whether you're playing a game, creating, or editing content, you'll enjoy dazzling visuals.



#### Brilliant FHD resolution

The IdeaPad 320 offers up to Full High-Definition resolution in three screen sizes – 14", 15" and 17". And with anti-glare technology, you'll enjoy true visual clarity when you watch movies, browse the web and more.



[WWW.LENOVO.COM](http://WWW.LENOVO.COM)



# ideapad 320

## SPECIFICATIONS

Lenovo IdeaPad 320-14ISK\*, Lenovo IdeaPad 320-14IAP\*, Lenovo IdeaPad 320-15ISK\*,  
Lenovo IdeaPad 320-15IAP\*, Lenovo IdeaPad 320-17ISK\*

### PERFORMANCE

#### Processor

Up to 6<sup>th</sup> Generation Intel® Core™ i7 Processor

#### Operating System

Windows 10 Home

#### Graphics

**320-14ISK, 320-15ISK, 320-17ISK**

Intel® Integrated Graphics

NVIDIA® GeForce® 920MX Graphics

**320-14IAP, 320-15IAP**

Intel® Integrated Graphics

AMD Radeon™ 530 Graphics

#### Camera & Microphone

0.3M with Single Microphone

HD with Single Microphone

#### Memory

**320-14ISK, 320-15ISK, 320-17ISK**

4 GB DDR4 On-board,

12 GB Maximum via One Memory Slot

**320-14IAP, 320-15IAP**

Up to 8 GB DDR3L

#### Storage

**320-14ISK, 320-15ISK, 320-17ISK**

Up to 512 GB SATA SSD; or

Up to 2 TB SATA HDD; or

Up to 256 GB SATA SSD + 1 TB SATA HDD

**320-14IAP, 320-15IAP**

Up to 256 GB SATA SSD; or

Up to 2 TB SATA HDD

#### Audio

2 x 1.5W Speakers with Dolby Audio™

#### Battery<sup>1</sup>

Up to 6 Hours

### DESIGN

#### Display

**320-14ISK, 320-14IAP**

14" HD (1366 x 768) Anti-Glare

14" FHD (1920 x 1080) Anti-Glare

**320-15ISK, 320-15IAP**

15.6" HD (1366 x 768) Anti-Glare

15.6" FHD (1920 x 1080) Anti-Glare

**320-17ISK**

17.3" HD+ (1600 x 900) Anti-Glare

17.3" FHD (1920 x 1080) IPS Anti-Glare

#### Dimensions (W x D x H)

**320-14ISK, 320-14IAP**

(mm) : 338.3 x 249.9 x 22.7

(inches): 13.3" x 9.8" x 0.89"

**320-15ISK, 320-15IAP**

(mm) : 378 x 260 x 22.9

(inches): 14.9" x 10.2" x 0.9"

**320-17ISK**

(mm) : 418 x 292.6 x 24.9

(inches): 16.4" x 11.5" x 0.98"

#### Weight

**320-14ISK, 320-14IAP**

Starting at 4.6 lbs (2.1 kg)

**320-15ISK, 320-15IAP**

Starting at 4.8 lbs (2.2 kg)

**320-17ISK**

Starting at 6.17 lbs (2.8 kg)

#### Tone-on-Tone Color Options

**320-14ISK, 320-14IAP**

Platinum Grey; Onyx Black;

Blizzard White; Denim Blue

**320-15ISK, 320-15IAP**

Platinum Grey; Onyx Black; Blizzard White;

Denim Blue; Plum Purple; Coral Red

**320-17ISK**

Platinum Grey; Onyx Black

### CONNECTIVITY

#### WLAN

1 x 1 WiFi 802.11 ac<sup>2</sup>

#### Bluetooth®

Bluetooth® 4.1

#### I/O (Input/Output) Ports

**320-14ISK, 320-15ISK, 320-17ISK**

1 x USB Type-C™

2 x USB 3.0

4-in-1 Card Reader

HDMI™

RJ45

Audio Jack

**320-14IAP, 320-15IAP**

1 x USB 2.0

1 x USB 3.0

4-in-1 Card Reader

HDMI™

RJ45

Audio Jack

### PRELOADED SOFTWARE

- Lenovo App Explorer
- Lenovo Companion 3.0
- Lenovo ID
- Lenovo Settings
- McAfee LiveSafe™ (30-day trial)
- Microsoft Office 365 (30-day trial)



<sup>1</sup> All battery life claims are approximate and based on test results using the MobileMark® 2014 ver 1.5 battery life benchmark test. Actual results will vary, and depend on numerous factors including product configuration and usage, software, operating conditions, wireless functionality, power management settings, screen brightness and other factors. The maximum capacity of the battery will naturally decrease with time and usage. See <https://bapccom/products/mobilemark-2014/> for additional details.

<sup>2</sup> Disable ac for Russia, Ukraine, Indonesia and Egypt.

## LENOVO SERVICES

#### Warranty Upgrades - On-site / In-Home Service

Maximizes PC uptime and productivity by providing convenient, fast repair services in your own home.

#### Accidental Damage Protection

Avoid the hassles of unexpected repair costs. Provides coverage for non-warranted damage incurred under normal operating conditions, such as minor spills, drops or damage to the integrated screen.

#### Warranty Extensions (1-to-3 Years Total Duration)

This fixed-term, fixed-cost service helps accurately budget for PC expenses, protect your valuable investment and potentially lower the cost of ownership over time.

\* Example of Lenovo IdeaPad catalogue naming convention



#### Intel® platform codes

Haswell: **IHW**, Broadwell: **IBD**, Broadwell U: **IBU**, Skylake: **ISK**, Skylake U: **ISU**, KabyLake: **IKB**, Cannonlake: **ICN**, Baytrail: **IBY**, Braswell: **IBR**, Cherrytrail: **ICR**, Apollolake: **IAP**, GeminiLake: **IGM**

## OPTIONS & ACCESSORIES



Lenovo 300  
Wireless Compact  
Mouse



Lenovo 500  
Extra Bass  
In-ear Headphones



Lenovo 500 2.0  
Bluetooth® Speaker



WWW.LENOVO.COM

Lenovo reserves the right to alter product offerings and specifications at any time, without notice. Lenovo makes every effort to ensure accuracy of all information but is not liable or responsible for any editorial, photographic or typographic errors. All images are for illustration purposes only. For full Lenovo product, service and warranty specifications visit [www.lenovo.com](http://www.lenovo.com). Lenovo makes no representations or warranties regarding third party products or services. **Trademarks:** The following are trademarks or registered trademarks of Lenovo: Lenovo, the Lenovo logo, ideapad, IdeaCentre, yoga and yoga home. Microsoft, Windows and Vista are registered trademarks of Microsoft Corporation. Ultrabook, Celeron, Celeron Inside, Core Inside, Intel, Intel Logo, Intel Atom, Intel Atom Inside, Intel Core, Intel Inside Logo, Intel vPro, Itanium, Itanium Inside, Pentium, Pentium Inside, vPro Inside, Xeon, Xeon Phi, and Xeon Inside are trademarks of Intel Corporation in the U.S. and/or other countries. Other company, product and service names may be trademarks or service marks of others. Visit [www.lenovo.com/lenovo/us/en/safecom/](http://www.lenovo.com/lenovo/us/en/safecom/) periodically for the latest information on safe and effective computing. ©2017 Lenovo. All rights reserved.



Lenovo™