

ideapad 320

LIFE JUST GOT EASIER.

Everything about the Lenovo™ IdeaPad™ 320 is designed to simplify your life. It will handle any task with ease, thanks to a powerful AMD processor and discrete graphics options. Preloaded with Windows 10 Home, you'll have the personal assistance of Cortana, designed to help open apps and answer your questions – whether typed or spoken. From the new streamlined design to a cleaner desktop interface, you'll enjoy the simplicity that Lenovo IdeaPad 320 offers. The biggest challenge you'll face is choosing your perfect color.

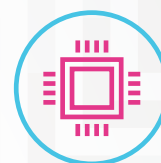


WHY YOU SHOULD BUY THE LENOVO IDEAPAD 320



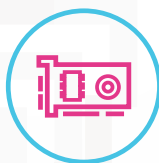
Style built to last

The IdeaPad 320 features a sleek chassis with angled edges, and is available in six sophisticated tone-on-tone color options: Platinum Grey, Onyx Black, Blizzard White, Denim Blue, Plum Purple and Coral Red. Better yet, the IdeaPad 320 is designed to keep up with you. We treated it with a special protective finish to guard against wear and tear, and added rubber detailing on the bottom cover to maximize ventilation and extend product life.



Powerful performance

Top-of-the-line AMD processing, plus up to 16 GB DDR4 memory, guarantee lightning-fast responsiveness. Run multiple programs simultaneously, and transition seamlessly between web tabs—you'll be able to multi-task with ease.



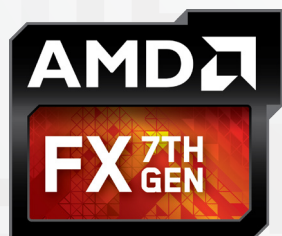
Smooth graphics

The IdeaPad 320 offers the option of a powerful AMD Radeon™ 530 graphics card. Discrete graphics cards rely on their own processing power, so you'll experience smoother graphics, less screen tearing and better gaming performance without compromising overall speed and responsiveness. Whether you're playing a game, creating, or editing content, you'll enjoy crisp visuals.



Brilliant FHD resolution

The IdeaPad 320 offers up to Full High-Definition resolution in three screen sizes – 14", 15" and 17". Featuring anti-glare technology, you'll enjoy true visual clarity when you watch movies, browse the web and more. (15" model also offers a touchscreen HD option.)



WWW.LENOVO.COM

Lenovo™

ideapad 320

SPECIFICATIONS

Lenovo IdeaPad 320-14AST*, Lenovo IdeaPad 320-15AST*, Lenovo IdeaPad 320-15ABR*,
Lenovo IdeaPad 320 Touch-15ABR*, Lenovo IdeaPad 320-17AST*, Lenovo IdeaPad 320-17ABR*

PERFORMANCE

Processor

320-15ABR, 320 Touch-15ABR, 320-17ABR

Up to 7th Generation AMD FX™-9800P APU

320-14AST, 320-15AST, 320-17AST

Up to 7th Generation AMD A9-9420 APU

Operating System

Windows 10 Home

Graphics

Up to AMD Radeon™ 530 Graphics

Camera & Microphone

HD720p or 0.3MP Fixed-Focus

CMOS Camera with Single Microphone

Memory

320-15ABR, 320 Touch-15ABR, 320-17ABR

4 GB DDR4

4 GB DDR4 On-board + Up to 8 GB via Memory Slot

16 GB DDR4

320-14AST, 320-15AST, 320-17AST

4 GB DDR4

8 GB DDR4

Storage

320-15ABR, 320 Touch-15ABR, 320-17ABR

Up to 512 GB SATA SSD; or

Up to 2 TB SATA HDD; or

Up to 128 GB SATA SSD + 1 TB SATA HDD

320-14AST, 320-17AST

Up to 256 GB SATA SSD; or

Up to 2 TB SATA HDD

320-15AST

Up to 256 GB SATA SSD; or

Up to 2 TB SATA HDD; or

Up to 128 GB SATA SSD + 1 TB SATA HDD

Audio

2 x 1.5W Speakers with Dolby Audio™

Battery¹

Up to 6 Hours

¹ All battery life claims are approximate and based on test results using the MobileMark® 2014 ver 1.5 battery life benchmark test. Actual results will vary, and depend on numerous factors including product configuration and usage, software, operating conditions, wireless functionality, power management settings, screen brightness and other factors. The maximum capacity of the battery will naturally decrease with time and usage. See <https://bapccom/products/mobilemark-2014/> for additional details.

² Available only for 15" models.

DESIGN

Display

320-14AST

14" HD (1366 x 768) Anti-Glare

14" FHD (1920 x 1080) Anti-Glare

320-15AST, 320-15ABR

15.6" HD (1366 x 768) Anti-Glare

15.6" FHD (1920 x 1080) Anti-Glare

320 Touch-15ABR

15.6" HD (1366 x 768) Anti-Glare

320-17AST, 320-17ABR

17.3" HD+ (1600 x 900) Anti-Glare

17.3" FHD (1920 x 1080) IPS Anti-Glare

Dimensions (W x D x H)

320-14AST

(mm) : 338.3 x 249.9 x 22.7

(inches): 13.3" x 9.8" x 0.89"

320-15AST, 320-15ABR, 320 Touch-15ABR

(mm) : 378 x 260 x 22.9

(inches): 14.9" x 10.2" x 0.9"

320-17AST, 320-17ABR

(mm) : 418 x 292.6 x 24.9

(inches): 16.4" x 11.5" x 0.98"

Weight

320-14AST

Starting at 4.6 lbs (2.1 kg)

320-15AST, 320-15ABR, 320 Touch-15ABR

Starting at 4.8 lbs (2.2 kg)

320-17AST, 320-17ABR

Starting at 6.17 lbs (2.8 kg)

Additional Feature

Touchscreen Option²

Tone-on-Tone Color Options

320-14AST

Platinum Grey; Onyx Black;

Blizzard White; Denim Blue

320-15AST, 320-15ABR, 320 Touch-15ABR

Platinum Grey; Onyx Black; Blizzard White;

Denim Blue; Plum Purple; Coral Red

320-17AST, 320-17ABR

Platinum Grey; Onyx Black

CONNECTIVITY

WLAN

1 x 1 WiFi 802.11 ac

Bluetooth®

Bluetooth® 4.1

I/O (Input/Output) Ports

320-15ABR, 320 Touch-15ABR, 320-17ABR

1 x USB Type-C™

2 x USB 3.0

4-in-1 Card Reader

HDMI™

RJ45

Audio Jack

320-14AST, 320-15AST, 320-17AST

1 x USB 2.0

1 x USB 3.0

4-in-1 Card Reader

HDMI™

RJ45

Audio Jack

PRELOADED SOFTWARE

- Lenovo App Explorer
- Lenovo Companion 3.0
- Lenovo ID
- Lenovo Settings
- McAfee LiveSafe™ (30-day trial)
- Microsoft Office 365 (30-day trial)



Lenovo™

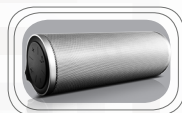
OPTIONS & ACCESSORIES



Lenovo 300
Wireless Compact
Mouse



Lenovo 500
Extra Bass
In-ear Headphones



Lenovo 500 2.0
Bluetooth® Speaker

LENOVO SERVICES

Warranty Upgrades - On-site / In-Home Service

Maximizes PC uptime and productivity by providing convenient, fast repair services in your own home.

Accidental Damage Protection

Avoid the hassles of unexpected repair costs. Provides coverage for non-warranted damage incurred under normal operating conditions, such as minor spills, drops or damage to the integrated screen.

Warranty Extensions (1-to-3 Years Total Duration)

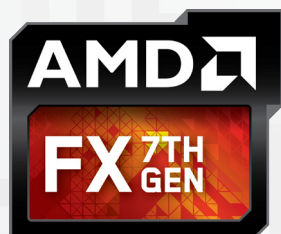
This fixed-term, fixed-cost service helps accurately budget for PC expenses, protect your valuable investment and potentially lower the cost of ownership over time.

* Example of Lenovo
IdeaPad catalogue
naming convention



AMD platform codes

Kaveri: AKV, Carrizo: ACZ, Godavari: AGR, Bristol Ridge: ABR, Beema: ABM, Carrizo-L: ACL, Bristol Ridge-L: ABL, Stoney Ridge: ASR



WWW.LENOVO.COM

Lenovo reserves the right to alter product offerings and specifications at any time, without notice. Lenovo makes every effort to ensure accuracy of all information but is not liable or responsible for any editorial, photographic or typographic errors. All images are for illustration purposes only. For full Lenovo product, service and warranty specifications visit www.lenovo.com. Lenovo makes no representations or warranties regarding third party products or services. **Trademarks:** The following are trademarks or registered trademarks of Lenovo: Lenovo, the Lenovo logo, ideapad, ideacentre, yoga and yoga home. Microsoft, Windows and Vista are registered trademarks of Microsoft Corporation. AMD, the AMD Arrow logo and combinations thereof are trademarks of Advanced Micro Devices, Inc. in the United States and/or other jurisdictions. Other company, product and service names may be trademarks or service marks of others. Battery life (and recharge times) will vary based on many factors including system settings and usage. Visit www.lenovo.com/lenovo/us/en/safecomp/ periodically for the latest information on safe and effective computing. ©2017 Lenovo. All rights reserved.