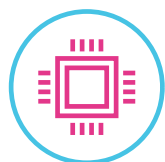


ideacentre 510A

GREAT FOR THE HOME, AND YOUR FINANCES.

The Lenovo™ IdeaCentre™ 510A is a stylish tower that packs a punch. With its power and speed, you and your family will be able to work, create, share, or watch. And if you want a boost, you'll be able to upgrade with next-gen storage and discrete graphics options.

WHY YOU SHOULD BUY THE LENOVO IDEACENTRE 510A



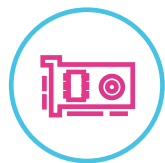
Power you can feel

With up to 9th Generation Intel® Core™ i7 powered by up to six processor cores, the IdeaCentre 510A delivers extraordinary responsiveness and speed.



Storage and memory you can count on

Get a boost with up to 16 GB DDR4 memory and 256 GB PCIe SSD storage. Boot-up faster, run multiple programs at the same time, and multitask like a pro.



Seeing is believing

Choose from a range of powerful discrete graphics cards, including NVIDIA® GeForce® GTX 1050 Ti. This advanced GPU boosts performance in high-definition games compared to previous-generation GPUs. It's created with the latest technologies and supports DirectX 12 features to deliver super-fast, smooth, power-efficient gameplay.



Ports aplenty

The IdeaCentre 510A has a host of ports and connectors, including USB 3.0, VGA, and LAN. So whether you need to plug-in your favorite speakers, a VR headset, or backup to an external drive, there's plenty of room. What's more, there's no need to fret about unsightly ports, as everything's discreetly housed behind a magnetic door.



Lenovo™



WWW.LENOVO.COM



ideacentre 510A

SPECIFICATIONS

Lenovo IdeaCentre 510A-15ICK*

PERFORMANCE

Processor

Intel® Core™ i7-9700 Processor
Intel® Core™ i5-9400 Processor
Intel® Core™ i3-9100 Processor
Intel® Pentium® Gold G5420 Processor
Intel® Celeron® G4900 Processor

Operating System

Windows 10 Home

Graphics

NVIDIA® GeForce® GTX 1650
AMD Radeon™ RX 560
AMD Radeon™ RX 550X
NVIDIA® GeForce® GT 730
Intel® UHD Graphics 630¹
Intel® UHD Graphics 610²

Memory

16 GB DDR4 Dual Channel
12 GB DDR4 Dual Channel
8 GB DDR4
4 GB DDR4
2 GB DDR4

Storage

128 GB/256 GB PCIe SSD
128 GB SATA SSD
1 TB/2 TB SATA HDD

DESIGN

Volume

15 L

Dimensions (W x D x H)

(mm) : 285.2 x 366.03 x 145
(inches): 11.23" x 14.41" x 5.71"

Weight

Starting at 12.8 lbs (5.8 kg)

Color

Iron Gray

CONNECTIVITY

WLAN

1 x 1 WiFi 802.11 ac

Bluetooth®

Bluetooth® 4.0

Input/Output (I/O) Ports

4 x USB 3.1 Gen1
1 x USB 3.0 Type-C™
4 x USB 2.0
VGA
HDMI™
RJ45 LAN
Combo Headphone/Microphone Audio Jack
7-in-1 Card Reader

PRELOADED SOFTWARE

- Lenovo Vantage
- Microsoft Office 2016
- McAfee LiveSafe™
- Lenovo App Explorer
- CyberLink Power2Go/Power2Go³

¹ For Intel® Core™ i3, i5 and i7 processors.

² For Intel® Pentium® and Celeron® processors.

³ With DVD drive.



LENOVO SERVICES

Warranty Upgrades - On-site / In-Home Service

Maximizes PC uptime and productivity by providing convenient, fast repair services in your own home.

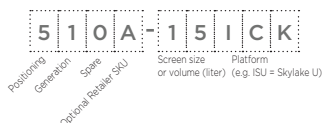
Accidental Damage Protection

Avoid the hassles of unexpected repair costs. Provides coverage for non-warranted damage incurred under normal operating conditions, such as minor spills, drops or damage to the integrated screen.

Warranty Extensions (1-to-3 Years Total Duration)

This fixed-term, fixed-cost service helps accurately budget for PC expenses, protect your valuable investment and potentially lower the cost of ownership over time.

* Example of
Lenovo IdeaCentre
catalogue naming
convention



Intel® platform codes

Haswell H81: IHH, Broadwell U: IBU, Skylake Z170: ISZ, Skylake B150: ISB, Kabylake: IKL, Skylake H110/H170: ISH, Skylake U: ISU, Apollo Lake: IAP, Kabylake H110: IKH, Coffee Lake B360: ICB, Coffee Lake H: ICH, Coffee Lake Z370 Overclock: ICO

OPTIONS & ACCESSORIES



Lenovo 500
Wireless Combo
Keyboard & Mouse



WWW.LENOVO.COM

Lenovo reserves the right to alter product offerings and specifications at any time, without notice. Lenovo makes every effort to ensure accuracy of all information but is not liable or responsible for any editorial, photographic or typographic errors. All images are for illustration purposes only. For full Lenovo product, service and warranty specifications visit www.lenovo.com. Lenovo makes no representations or warranties regarding third party products or services. **Trademarks:** The following are trademarks or registered trademarks of Lenovo: Lenovo, the Lenovo logo, Ideapad, IdeaCentre, yoga and yoga home. Microsoft, Windows and Vista are registered trademarks of Microsoft Corporation. Ultrabook, Celeron, Celeron Inside, Core Inside, Intel, Intel Logo, Intel Atom, Intel Atom Inside, Intel Core, Intel Inside, Intel Inside Logo, Intel vPro, Itanium, Itanium Inside, Pentium, Pentium Inside, vPro Inside, Xeon, Xeon Phi, and Xeon Inside are trademarks of Intel Corporation in the U.S. and/or other countries. Other company, product and service names may be trademarks or service marks of others. Visit www.lenovo.com/lenovo/us/en/safecomp/ periodically for the latest information on safe and effective computing. ©2018 Lenovo. All rights reserved.



Lenovo™