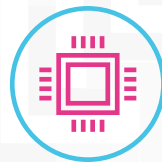


ideacentre 510A

UPGRADE YOUR FAMILY DESKTOP PC

A DESKTOP KEEPING YOUR FAMILY CONNECTED

Great for family members to connect and share, Lenovo™ IdeaCentre™ 510A is equipped with AMD Bristol Ridge processors and AMD Radeon™ RX 460 graphics. Up to PCIe 256 GB SSD and 2 TB HDD Hybrid storages, Lenovo IdeaCentre 510A offers your own storage assistant - Lenovo Family Cloud where you can share any content you like with your family members and friends.



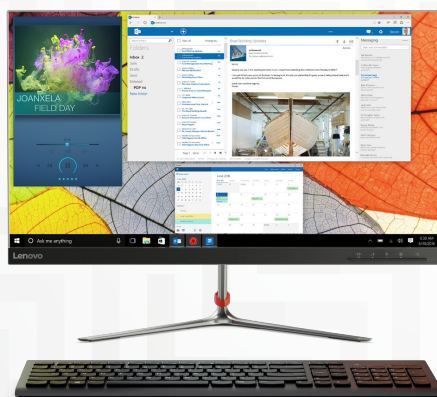
Flawless performance

Built with AMD Bristol Ridge processors and complete with optional AMD Radeon™ RX 460 graphics, IdeaCentre 510A is the perfect combination of daily work and entertainment.



Lightning-fast PCIe SSD storage

Make you dazzling-fast with up to 256 GB PCIe SSD storage, IdeaCentre 510A is your best bet for keeping your media in one place. Boosts daily performance significantly when compared with a traditional Hard Disk Drive.



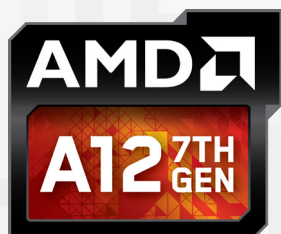
Connects to all your accessories

Your monitor, keyboard, external hard drive, camera and favorite speakers don't need to vie for available ports on the IdeaCentre 510A. This machine offers multiple ways to connect.



Lenovo family cloud

A central interface for your secured data storage features smart recognition technology, and effortlessly upload and download between your mobile and PC within the same network.



WWW.LENOVO.COM

Lenovo™

ideacentre 510A

SPECIFICATIONS

Lenovo IdeaCentre 510A-15ABR*

PERFORMANCE

Processor

AMD Bristol Ridge Processors

Operating System

Windows 10 Home

Graphics

AMD Radeon™ RX 460 Graphics

Memory

Up to 16 GB DDR4

Storage

Up to 256 GB PCIe SSD

Up to 2 TB HDD

Up to 256 GB PCIe SSD and 2 TB HDD

CONNECTIVITY

WLAN

WiFi 802.11 ac

Bluetooth®

Bluetooth® 4.0

I/O (Input/Output) Ports

2 x USB 3.0

4 x USB 2.0

1 x VGA

1 x HDMI™

1 x LAN

1 x Serial

DESIGN

Volume

15 Liter

Dimensions (W x D x H)

(mm) : 145 x 285 x 366.03

(inches) : 5.71" x 11.22" x 14.41"

Weight

Starting at 15.1 lbs (6.85 kg)

Colors

Gun Metal

PRELOADED SOFTWARE

Lenovo Application

- Lenovo Rescue System
- Lenovo DAI (Driver and Application Install)
- Lenovo Companion
- Lenovo Family Cloud
- Lenovo ID
- Lenovo Application Explorer (LAE)
- Lenovo Audit Data (LAD)
- CCSDK

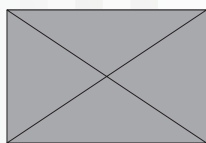
OEM Application

- McAfee™ AntiVirus
- Microsoft Office 2016
- Power2Go/Blu-ray Disc™ 6.0
- PowerDVD/Blu-ray Disc™ 12.0
- Adobe® Reader® 10 / Microsoft Silverlight 4.0*
- E&M Monetization Software (LAD, IE Bookmark, DAD, Dropbox JP . . .)

* For Canada/USA.



OPTIONS & ACCESSORIES



Optional Lenovo 500 Wireless Combo Keyboard and Mouse

LENOVO SERVICES

Warranty Upgrades - On-site / In-Home Service

Maximizes PC uptime and productivity by providing convenient, fast repair services in your own home.

Accidental Damage Protection

Avoid the hassles of unexpected repair costs. Provides coverage for non-warranted damage incurred under normal operating conditions, such as minor spills, drops or damage to the integrated screen.

Warranty Extensions (1-to-3 Years Total Duration)

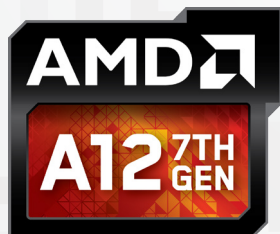
This fixed-term, fixed-cost service helps accurately budget for PC expenses, protect your valuable investment and potentially lower the cost of ownership over time.

* Example of Lenovo IdeaCentre catalogue naming convention



AMD platform codes

Kaveri: AKV, Carrizo: ACZ, Godavari: AGR, Bristol Ridge: ABR, Beema: ABM, Carrizo-L: ACL, Bristol Ridge-L: ABL, Stoney Ridge: ASR



WWW.LENOVO.COM

Lenovo reserves the right to alter product offerings and specifications at any time, without notice. Lenovo makes every effort to ensure accuracy of all information but is not liable or responsible for any editorial, photographic or typographic errors. All images are for illustration purposes only. For full Lenovo product, service and warranty specifications visit www.lenovo.com. Lenovo makes no representations or warranties regarding third party products or services. **Trademarks:** The following are trademarks or registered trademarks of Lenovo: Lenovo, the Lenovo logo, ideapad, ideacentre, yoga and yoga home. Microsoft, Windows and Vista are registered trademarks of Microsoft Corporation. AMD, the AMD Arrow logo and combinations thereof are trademarks of Advanced Micro Devices, Inc. in the United States and/or other jurisdictions. Other company, product and service names may be trademarks or service marks of others. Battery life (and recharge times) will vary based on many factors including system settings and usage. Visit www.lenovo.com/lenovo/us/en/safecomp/ periodically for the latest information on safe and effective computing. ©2017 Lenovo. All rights reserved.

Lenovo™