

A PORTABLE COMPUTING
POWERHOUSE

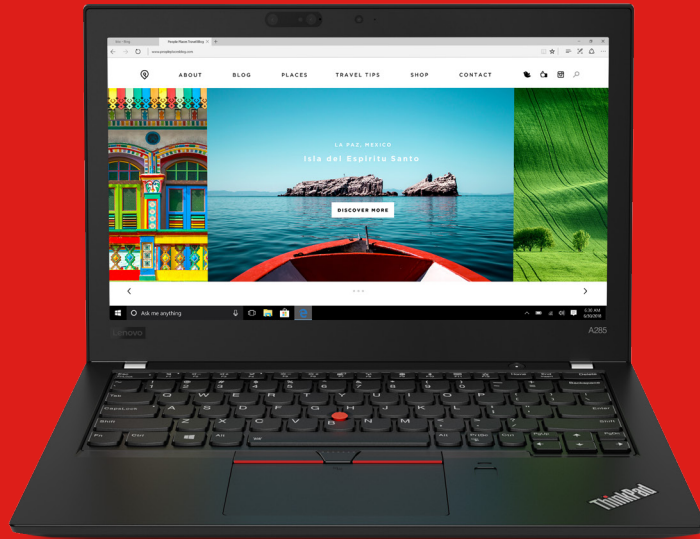


ThinkPad A285



Lenovo

ThinkPad A285



THE ULTIMATE COMBINATION OF PERFORMANCE AND PORTABILITY

The lightweight and thin ThinkPad A285 is designed for on-the-go businesses. It delivers an exceptional performance with the latest AMD Ryzen™ PRO Mobile Processor with Radeon™ Vega Graphics card and DDR4 memory that enable rich content creation. A battery life of 10.55 hours* along with the RapidCharge technology, that charges the laptop up to 80% in an hour, ensures unhindered productivity. Be it at the office, home, or on the road, experience uninterrupted data access with the Global LTE-A feature anytime, anywhere. Its robust security features like Match on Chip Touch Fingerprint Reader and the IR camera with Windows Hello keep all the confidential data protected.

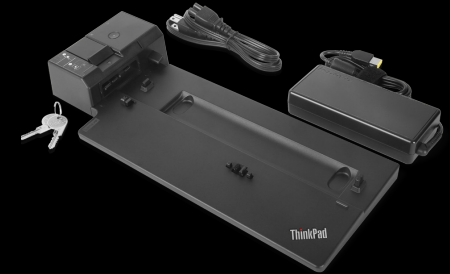
**Based on testing with MobileMark 2014. Battery life varies significantly with settings, usage, and other factors.*

ACCESSORIES

ThinkPad Docking Station ▶

(PN: 40AG0090xx (Basic),
40AH0135xx (Pro),
40AJ0135xx (Ultra))

The ThinkPad side mechanical docking station provides the best docking experience for ThinkPad customers. The innovative side connector, designed exclusively for ThinkPad notebooks, provides a driver-free way to connect conveniently and securely to a range of USB accessories and external displays. Its device charging support and mirrored power button make it easy to get started and work efficiently.



Wireless Mouse

(PN: 0B4716x*)

Get precise control without being tied down. Its sleek 2-button ambidextrous design ensures that this mouse is both comfortable and easy to use. Blue optical tracking technology provides precision performance that operates on almost any surface.

**(refer to the note for country-specific PN)*



Lenovo In-Ear Headphones ▶

(PN: 4XD0J65079)

With three unique designs, find your fit for great sound quality. The lightweight portability, comfortable fit, and over-the-ear loop of these headphones keep distraction out and let your creativity flow.



Lenovo™

ThinkPad A285

PERFORMANCE

Processor

Up to AMD Ryzen™ PRO R7 Mobile Processor

Operating System

Windows 10 Pro

Graphics

AMD Radeon™ Vega Graphics

Camera

720p HD Camera with ThinkShutter

720p HD Camera with IR Camera

Memory

Up to 16GB DDR4 Down 2400MHz

Storage

Up to 512GB PCIe SSD

Battery

48Whr (10.55 hours*)

RapidCharge

Yes

Keyboard

Backlight

Durability

MIL-SPEC Tested

SECURITY

Match on Chip Touch Fingerprint Reader

Windows Hello

ThinkShutter Camera Cover

fTPM/TPM 2.0

AES 128-bit Encryption

AMD GuardMI Technology

DESIGN

Display

12.5" HD TN

12.5" FHD IPS

12.5" FHD IPS LW Touch

Dimensions (W x D x H)

307.7 x 209.8 x 17.4-17.8mm

12.11 x 8.26 x 0.69-0.70inches

Weight

Starting at 1.13kg/2.49lbs.

Colors

Black

CONNECTIVITY

Ethernet

Ethernet extension connector

AC 2 x 2

Global LTE-A

Yes, Fibocom L850-GL

Input/Output Ports

1 x USB-A 3.1 Gen 1

1 x USB-A 3.1 Gen 2

2 x USB-C

3.5mm Microphone Headphone Jack (audio)

Smart Card Reader

Video Ports

HDMI 2.0

USB-C (DP) 1.4

Docking

USB-C Side Mechanical Docking

USB-C Cable Dock

USB 3.0 Dock

RECOMMENDED SERVICES

Lenovo offers a comprehensive portfolio of services to support and protect your ThinkPad investment — so you can focus on your work, not your IT.

Premier Support

Provides direct access to skilled and experienced Lenovo technicians offering comprehensive hardware and software support. Gives you a consistent point of contact within Lenovo to ensure that your case resolution is professionally managed from start to finish.

Accidental Damage Protection (ADP)

Prevents the hassles of unexpected repair costs.

Provides coverage for non-warranted damage incurred under normal operating conditions, such as minor spills, drops, or damage to the integrated screen.

Warranty Extensions (1 To 5 Years Total Duration)

This fixed-term, fixed-cost service helps you accurately budget for PC expenses, protect your valuable investment, and lower the cost of ownership over time.

*Based on testing with MobileMark 2014. Battery life varies significantly with settings, usage, and other factors.



© 2018 Lenovo. All rights reserved. These products are available while supplies last. Prices shown are subject to change without notice. For any questions concerning price, please contact your Lenovo Account Executive. Lenovo is not responsible for photographic or typographic errors. Warranty: For a copy of applicable warranties, write to: Warranty Information, 500 Park Offices Drive, RTP, NC 27709, Attn: Dept. ZPYA/B600. Lenovo makes no representation or warranty regarding third-party products or services. Trademarks: Lenovo, the Lenovo logo, Rescue and Recovery, ThinkPad, ThinkCentre, ThinkStation, ThinkVantage, and ThinkVision are trademarks or registered trademarks of Lenovo. Microsoft, Windows, and Vista are registered trademarks of Microsoft Corporation. AMD, the AMD Arrow logo, and combinations thereof are trademarks of Advanced Micro Devices, Inc. in the United States and/or other jurisdictions. Other company, product, and service names may be trademarks or service marks of others.

Lenovo[®]