

MIIX 630

CONNECT, CREATE AND COLLABORATE. ANYTIME. ANYWHERE.

THE ANYWHERE, ANYTIME PC.

The Lenovo™ Miix 630 is our first device built around the new Qualcomm® Snapdragon™ processor. What does this mean? You're always on, always connected. LTE connectivity means that your PC is not limited to WiFi range – your emails, messages, and social feeds are constantly syncing. And this constant connection won't wear on your battery – we've developed a low-efficiency Standby Mode and delivered a whopping 20 hours battery life. Snapdragon™ has also allowed us to build a strikingly thin, light, fanless design. And did we mention Miix 630 has a detachable keyboard and digital pen for ultimate flexibility? We call this a win-win...win.



Lenovo™

WHY YOU SHOULD BUY THE LENOVO MIIX 630



Always on, always connected

Built for your on-the-go lifestyle, the Miix 630 combines powerful Qualcomm® Snapdragon™ processing, blazing-fast 4G, and the latest in mobile connectivity technology. And with up to 20 hours of battery life, it will keep going as long as you can.



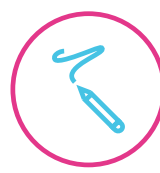
Streamlined performance, maximum security

Preloaded with Windows 10 S, Miix 630 gives you the peace of mind that comes with Microsoft-verified security and software support. Furthermore, thanks to the built-in infrared camera and Windows Hello, you can sign into your Miix 630 with just your smile.



Thinner, lighter and cooler

Thanks to a unique fanless design and meticulous Lenovo engineering, the Miix 630 is just 7.3 mm thin and weighs only 770 g. So you can enjoy the best of both worlds—the power of a full-fledged laptop and the mobility of a multimedia tablet.



Unleash your inner artist

With Windows Ink and Lenovo Digital Pen, you can write directly onto the Miix 630's screen. Take notes, sketch something, sign a form, or simply doodle away. And when you're done, just slip the pen into the dedicated holder.



WWW.LENOVO.COM

Miix 630

SPECIFICATIONS

DESIGN

Dimensions (without Keyboard)



Weight

Without Keyboard : 770 g (1.7 lbs)

Operating System

Windows 10 S



Display

Form Factor : 2-in-1 Detachable
Size : 12.3"
Resolution : FHD+ (1920 x 1280)
Screen : Corning® Glass
Keyboard : Backlit Keyboard
Touchpad : PTP



Color

Iron Grey



SIM

Type : Nano SIM
Slots : Single SIM



Camera

Rear
13 MP Auto-Focus
Front
5 MP
IR Camera with Windows Hello Supported



Unique Features

Built-in LTE for AOAC (Always On, Always Connected)
Cortana
Windows Hello with IR Camera
Fanless Design
Lenovo Digital Pen Inbox
GPS Functionality

PERFORMANCE

Processor

Qualcomm® Snapdragon™ 835

Graphics

Integrated Adreno™ 540

Microphones

2 Microphones

Speakers

2 x 1W Speakers

Memory

4 GB/8 GB LPDDR4X

Storage

64 GB/128 GB/256 GB UFS 2.1

Battery*

20 Hours, 48 Wh



CONNECTIVITY

Wireless Connectivity

WLAN : 2 x 2 WiFi 802.11 ac
Bluetooth® : Bluetooth® 4.1 + LE and Security
LTE : Yes, Built-in, Cat-11
600 Mbps Download Speed
Ports : 1 x USB Type-C™
1 x SD Card Reader
1 x Nano SIM Card Slot
Audio Combo Jack



SOFTWARE

- Lenovo Companion 4.0 (for ARM)

* Up to 20 hours based on local video playback requires unit configured with Qualcomm® Snapdragon™ 835 SoC, 4 GB RAM, 128 GB UFS storage. Battery life tested using continuous FHD video playback, 1080p (1920 x 1080) resolution, 150-nits brightness, system audio level at 17%, player audio level at 100%, played full-screen from local storage, headphone attached, wireless-On but not connected. Actual results will vary, and depend on numerous factors including product configuration and usage, software, operating conditions, wireless functionality, power management settings, screen brightness and other factors. The maximum capacity of the battery will naturally decrease with time and usage.

WHAT'S IN THE BOX

- Miix 630
- Lenovo Pen
- Folio Case
- Charger



BUNDLED ACCESSORIES



Miix 630 Folio Case



Lenovo Pen

RECOMMENDED LENOVO SERVICES

Warranty Extensions (1-to-3 Years Total Duration)* The fixed-term, fixed-cost service helps accurately budget for PC expense, protect your valuable investment and potentially lower the cost of ownership.

Accidental Damage Protection* Avoid the hassles of unexpected repair costs. Provides coverage for non-warranted damage incurred under normal operating conditions, such as minor spills, drops or damage to the integrated screen.

* Not available in all countries.



WWW.LENOVO.COM



Lenovo reserves the right to alter product offerings and specifications at any time, without notice. Lenovo makes every effort to ensure accuracy of all information but is not liable or responsible for any editorial, photographic or typographic errors. All images are for illustration purposes only. For full Lenovo product, service and warranty specifications visit www.lenovo.com. Lenovo makes no representations or warranties regarding third party products or services. **Trademarks:** The following are trademarks or registered trademarks of Lenovo: Lenovo, the Lenovo logo, Yoga. Google and the Google logo are trademarks of Google Inc. Android is a trademark of Google Inc. Ultrabook, Celeron, Celeron Inside, Core Inside, Intel, Intel Logo, Intel Atom, Intel Atom Inside, Intel Core, Intel Inside, Intel Inside Logo, Intel vPro, Itanium, Itanium Inside, Pentium, Pentium Inside, vPro Inside, Xeon, Xeon Phi and Xeon Inside are trademarks of Intel Corporation in the U.S. and/or other countries. Other company, product and service names may be trademarks or service marks of others. Battery life (and recharge times) will vary based on many factors including system settings and usage. ©2017 Lenovo. All rights reserved.

Lenovo™